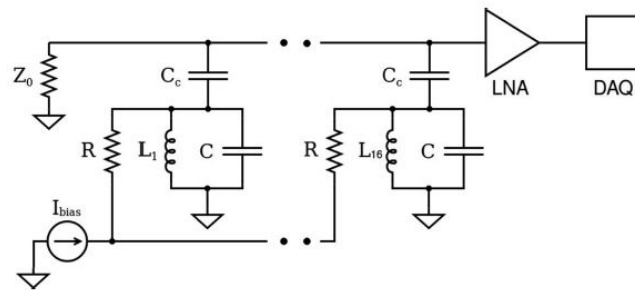
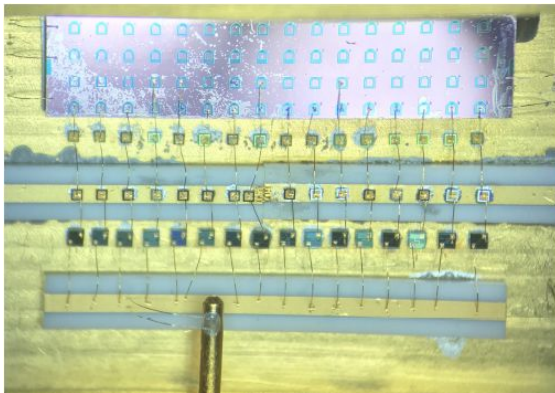


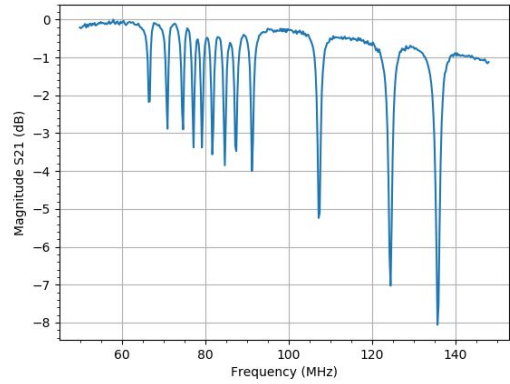
Nanowire Kinetic Inductance Detector Array

- Combining high timing resolution of SNSPDs with the multiplexing capability of KIDs.
- NbN nanowire meander utilized as part of the inductive element of a resonator.
- Each resonant frequency is read out on a single line.
- Operates in KID mode or SPD mode.

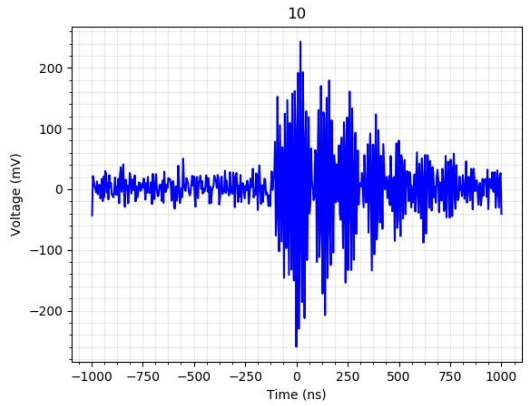


- VNA sweep of the full array.

KID Mode

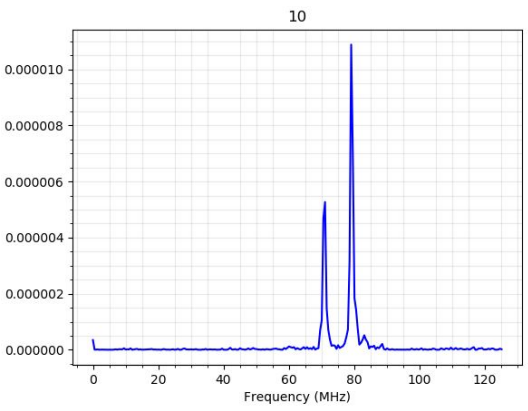
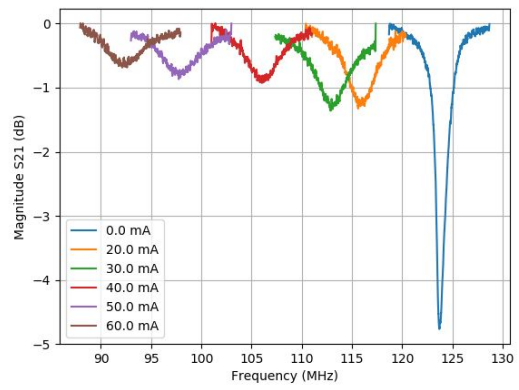


DC biased SPD Mode



- Operating with DC bias, two pulses from separate nanowires.

- Single resonator frequency shift at various LED bias currents.



- FFT of pulses show which detectors were struck.