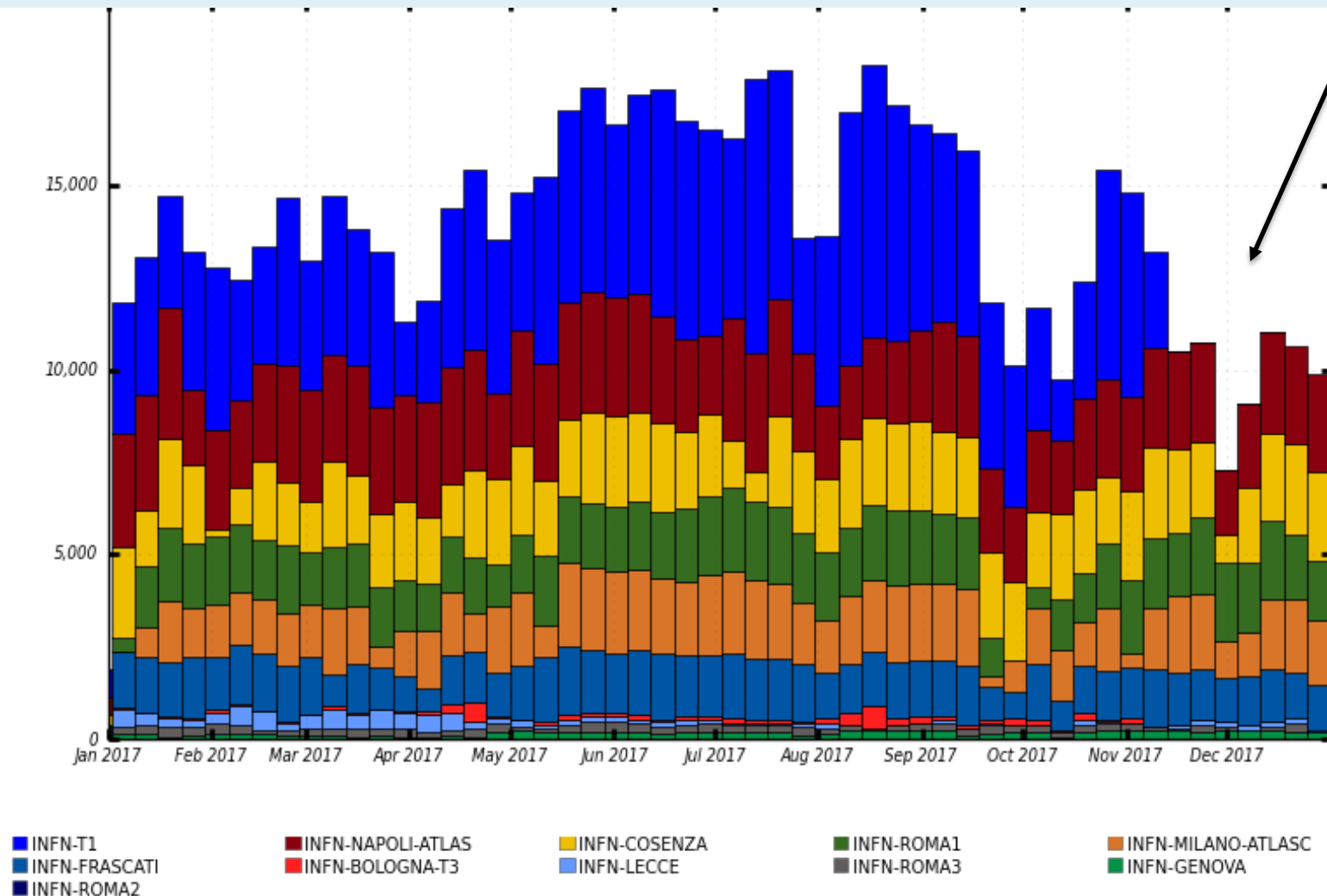


ReCaS Napoli per il Computing di ATLAS

Computing di ATLAS: Utilizzo risorse

Napoli ospita il maggiore Tier2 di Atlas Italiano, con carico costante al 100% per lunghi periodi.

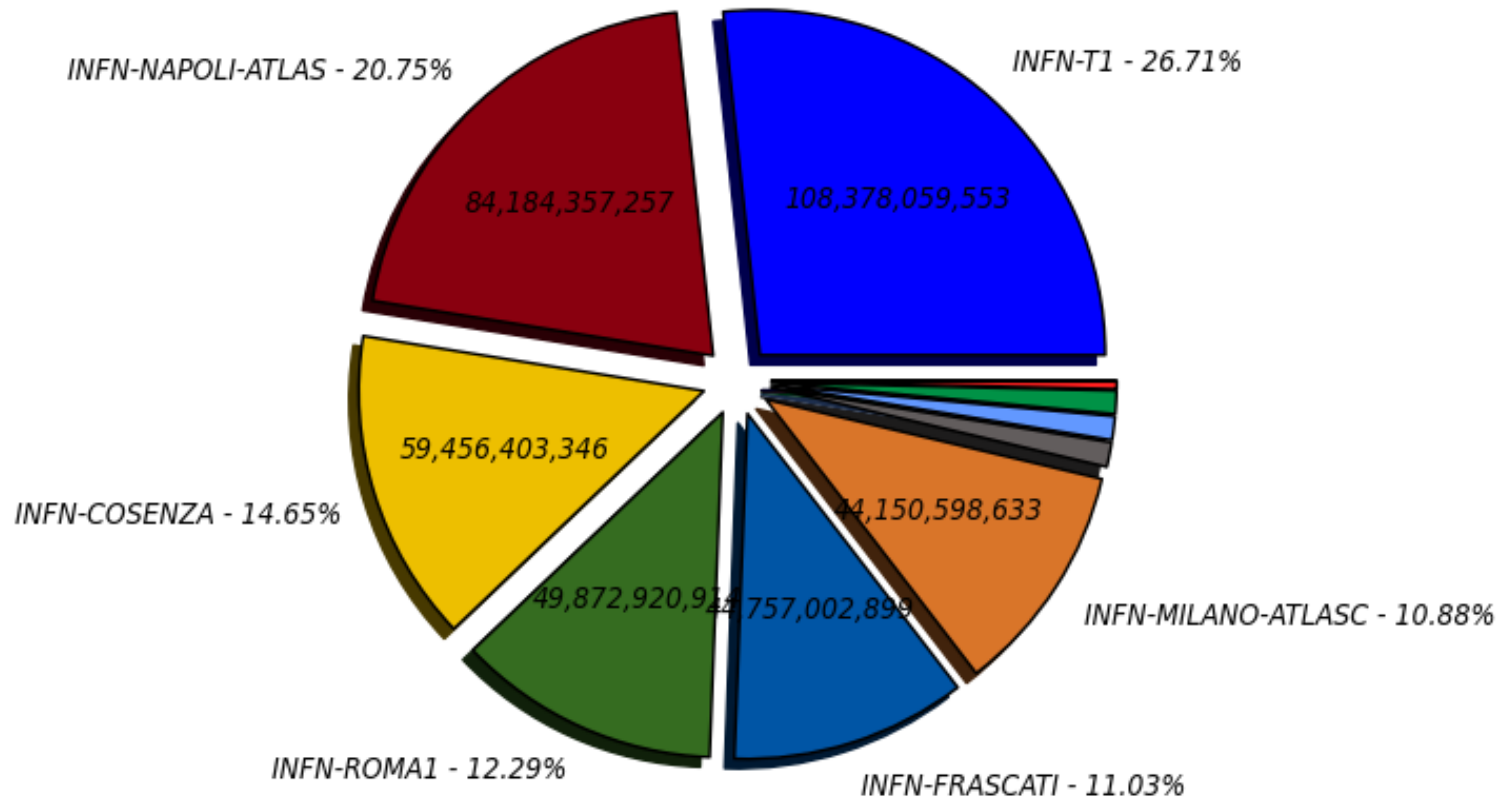


Maximum: 18,234 , Minimum: 0.00 , Average: 13,473 , Current: 9,896

Computing di ATLAS: Utilizzo risorse



Wall Clock consumption Good Jobs in seconds (Sum: 405,801,861,208)

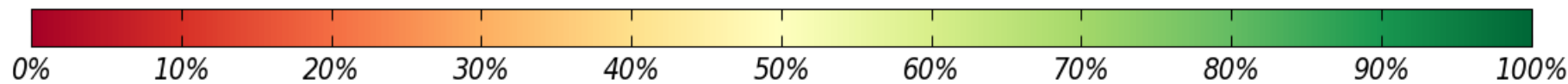
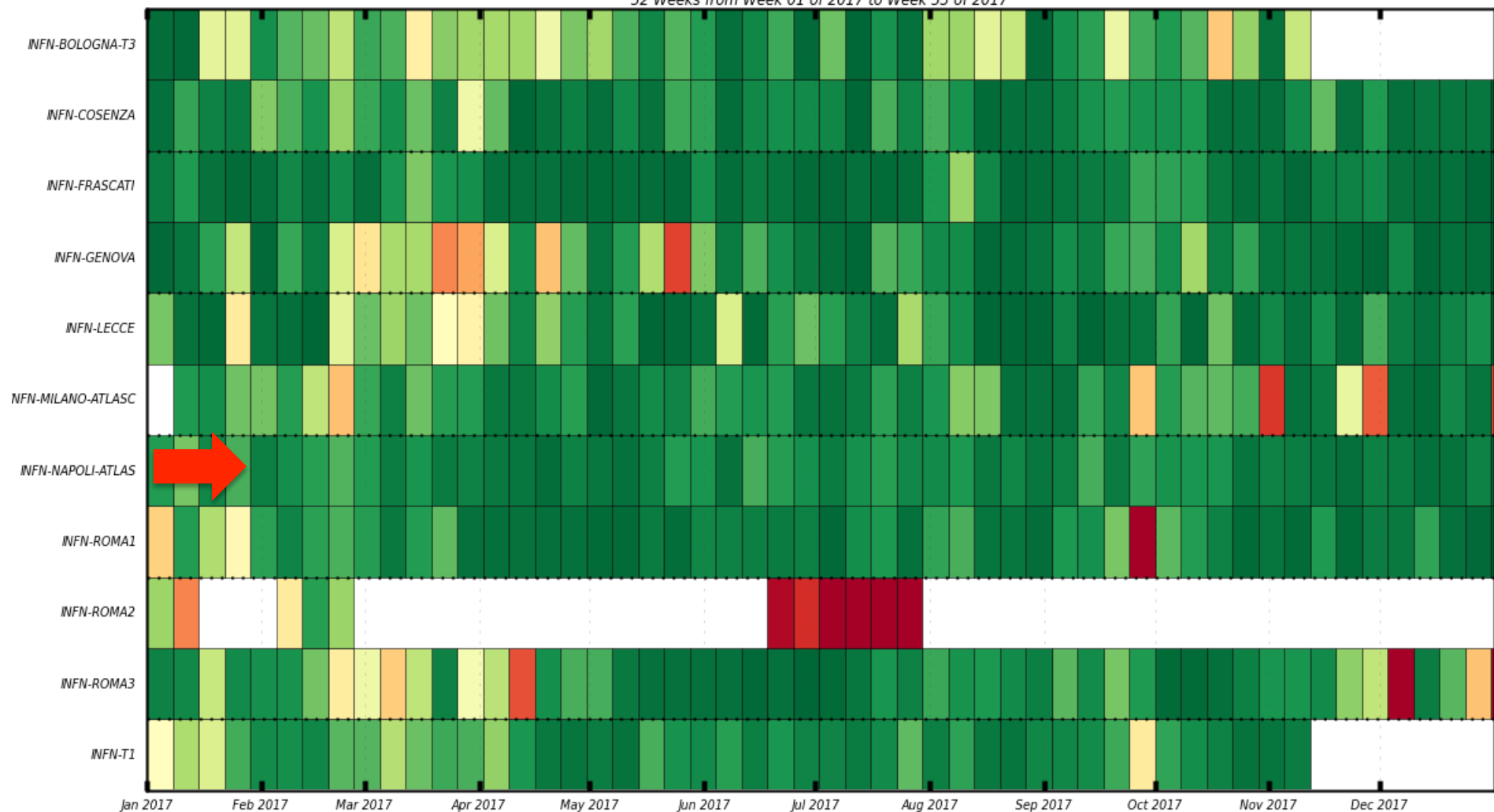


- INFN-T1 - 26.71% (108,378,059,554)
- INFN-COSENZA - 14.65% (59,456,403,346)
- INFN-FRASCATI - 11.03% (44,757,002,899)
- INFN-ROMA3 - 1.15% (4,662,584,419)
- INFN-GENOVA - 1.08% (4,367,564,480)
- INFN-ROMA2 - 0.00% (10,728,694)

- INFN-NAPOLI-ATLAS - 20.75% (84,184,357,257)
- INFN-ROMA1 - 12.29% (49,872,920,914)
- INFN-MILANO-ATLASC - 10.88% (44,150,598,633)
- INFN-LECCE - 1.10% (4,481,126,114)
- INFN-BOLOGNA-T3 - 0.36% (1,480,514,898)

WallClock Efficiency based on success/all accomplished jobs

52 Weeks from Week 01 of 2017 to Week 53 of 2017



Efficiency All Jobs 52 Weeks from Week 01 of 2017 to Week 53 of 2017

