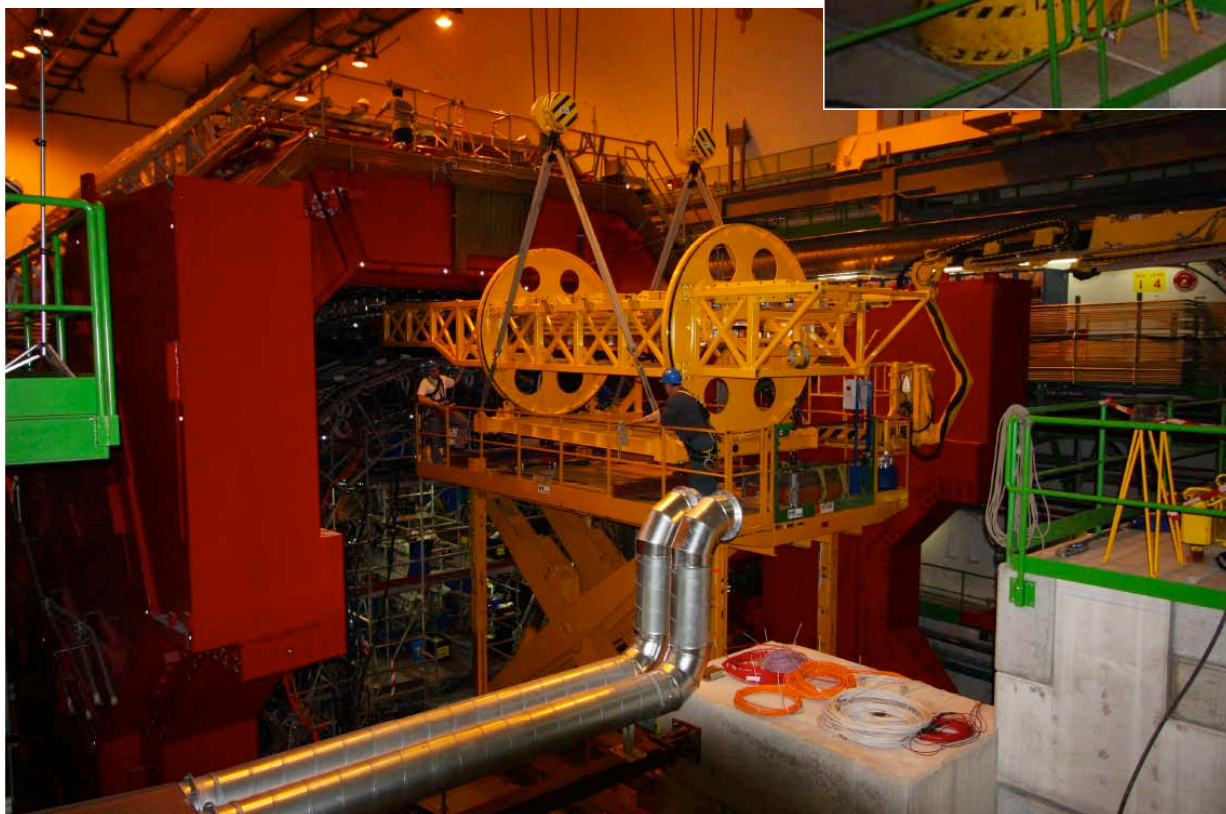
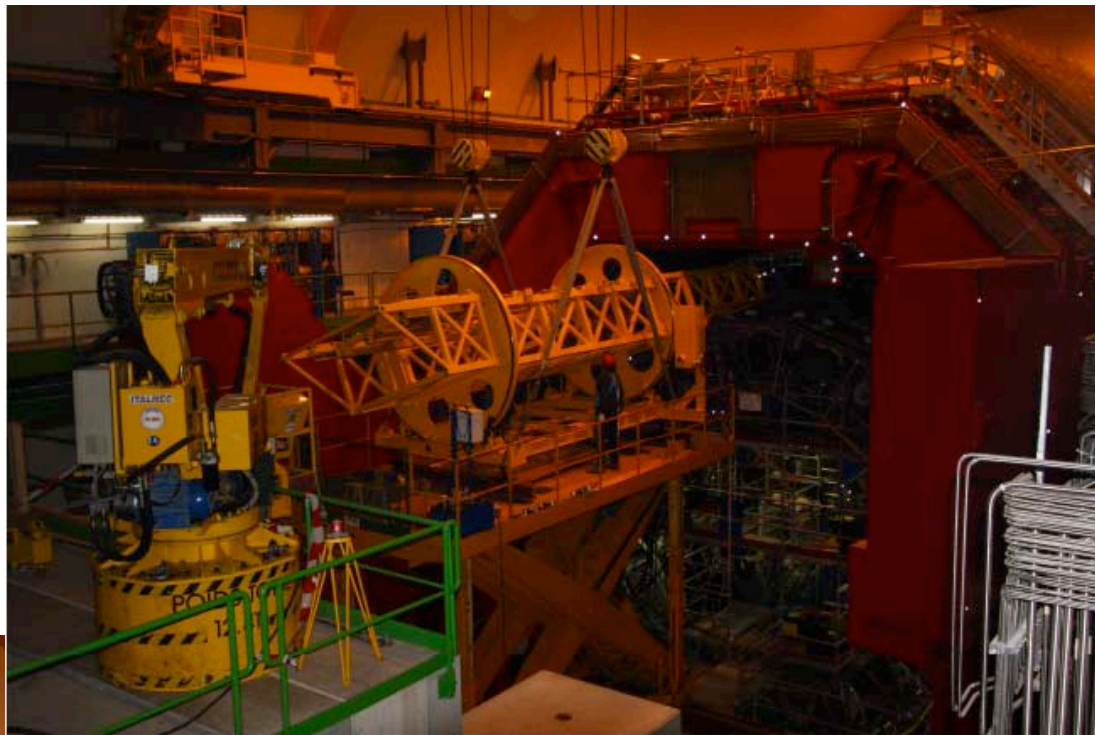


Two Super Modules Installed –
Two more on the way



US SM#2 a few weeks ago -
Strip mechanical assembly complete
Installing APDs and testing in progress





Final steps in the mechanical
integration of US SM#2 at
Wayne State



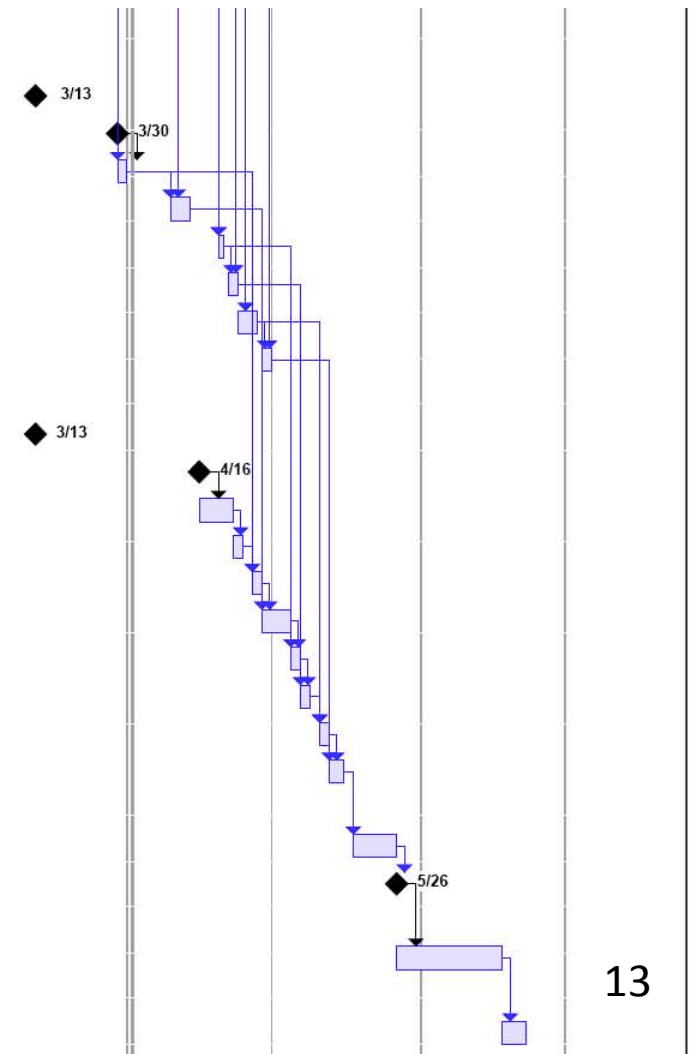
ID	Task Name	Duration	Start	Gantt Chart																							
				March	April	May	June	July																			
				3/1	3/8	3/15	3/22	3/29	4/5	4/12	4/19	4/26	5/3	5/10	5/17	5/24	5/31	6/7	6/14	6/21	6/28	7/5	7/12	7/19			
1	243 APDs Received to Houston from Terry	3 days	Mon 3/9/09																								
2	243 calibrated APD's to WSU from UHn (5 Strips)	5 days	Thu 3/12/09																								
3	709 APDs received from japan	12 days	Thu 3/12/09																								
4	350 calibrated APD's to WSU from UH (7.3 Strips)	5 days	Mon 3/30/09																								
5	359 calibrated APD's to WSU from UH (7.5 strips)	5 days	Mon 4/6/09																								
6	274 APDs received from japan	12 days	Mon 3/23/09																								
7	200 calibrated APD's to WSU fromUh (4.18 strips)	5 days	Wed 4/8/09																								
8	APDs for US Sm complete	0 days	Tue 4/14/09																								
9																											
10	74 calibrated APD's to WSU from Houston	5 days	Wed 4/8/09																								
11	526 APDs received from Japan	10 days	Mon 4/27/09																								
12	326 calibrated APD's to WSU from Houston, Completes I	5 days	Tue 5/12/09																								
13	200 calibrated APD's to WSU from Houston	3 days	Thu 5/21/09																								
14	APDs for 1/2 EU Sm complete	0 days	Mon 5/25/09																								
15																											
16	500 APDs received from Japan	10 days	Mon 5/25/09																								
17	300 calibrated APD's to WSU from Houston,	5 days	Tue 6/9/09																								
18	200 calibrated APD's to WSU from Houston,	2 days	Tue 6/16/09																								
19	600 APDs received from Japan	10 days	Mon 6/15/09																								
20	300 calibrated APD's to WSU from Houston,	5 days	Tue 6/30/09																								
21	300 calibrated APD's to WSU from Houston,	5 days	Tue 7/7/09																								
22																											
23																											
24	Scintillators Production	1 day?	Fri 3/13/09																								
25	Scintillators for 272 modules are ready	0 days	Mon 3/23/09																								
26	11,000 tiles received at WSU 5000 for US and 6000 to E	0 days	Wed 4/1/09																								
27	Scintillators for 16 Modules ready to Finish US	0 days	Wed 4/1/09																								
28	Scintillators for 19 Modules ready to start EU	0 days	Wed 4/1/09																								
29	29000 Tiles delivered for EU SM (94 Modules)	0 days	Mon 4/20/09																								
30																											
31	Module Production	0 days	Fri 3/13/09																								
32	183 US module 5 complete to date	0 days	Fri 3/13/09																								
33	223 US module complete	5 days	Fri 3/13/09																								

ID	Task Name	Duration	Start	March							April					May					June				July			
				3/1	3/8	3/15	3/22	3/29	4/5	4/12	4/19	4/26	5/3	5/10	5/17	5/24	5/31	6/7	6/14	6/21	6/28	7/5	7/12	7/19				
34	263 US module complete	6 days	Fri 3/20/09																									
35	288 US module complete	0 days	Thu 4/2/09																									
36	Float	0 days	Thu 4/2/09																									
37	US Module Production Complete	0 days	Thu 4/2/09																									
38	35 EU Modules Production	6 days	Thu 4/2/09																									
39	73 modules for EU complete	13 days	Mon 4/20/09																									
40	108 EU Modules are complete	0 days	Thu 5/7/09																									
41																												
42																												
43	LED Fiber Bundle Production	0 days	Fri 3/13/09																									
44	20 Bundles for 20 strip complete to date	0 days	Fri 3/13/09																									
45	24 Bundles for 20 strip complete	5 days	Fri 3/13/09																									
46	LED Fibers for US SM complete	0 days	Thu 3/19/09																									
47	EU LED Fiber Production	12 days	Fri 3/20/09																									
48																												
49	Strip Mechanical assembly	0 days	Fri 3/13/09																									
50	10 Strip Complete to date	0 days	Fri 3/13/09																									
51	14 strips complete	3 days	Fri 3/13/09																									
52	17 Strips complete	3 days	Fri 3/20/09																									
53	20 strip complete	3 days	Mon 3/30/09																									
54	24 strips complete	3 days	Thu 4/2/09																									
55	US Module Production Complete	0 days	Mon 4/6/09																									
56	9 EU Strips Mecanical Assembly Complete	18 days	Mon 4/20/09																									
57																												
58	Close out of US Stripmodules	0 days	Fri 3/13/09																									
59	5 strips complete	3 days	Thu 3/19/09																									
60	12 strips complete	4 days	Mon 4/6/09																									
61	14 Strips complete	5 days	Mon 4/13/09																									
62	17 Strips complete	2 days	Mon 4/20/09																									
63	20 strips complete	2 days	Wed 4/22/09																									
64	24 strips complete	3 days	Fri 4/24/09																									
65	US Strips Close out Complete	0 days	Tue 4/28/09																									

Schedule for US SM#2 from approximately this point forward

- Everything through line 84 is completed
- Text in **Red** was formerly critical path

70				
71				
72		US SM Mechanical Assembly	0 days	Fri 3/13/09
73	☰	Crate and Platform are ready	0 days	Mon 3/30/09
74		5 strips complete	2 days	Mon 3/30/09
75		12 strips complete	2 days	Fri 4/10/09
76		14 Strips complete	1 day	Mon 4/20/09
77		17 Strips complete	2 days	Wed 4/22/09
78		20 strips complete	2 days	Fri 4/24/09
79		24 strips complete	2 days	Wed 4/29/09
80				
81		SM Cabling and Checkout	0 days	Fri 3/13/09
82	☰	Cables for 8 Strips ready @ WSU	0 days	Thu 4/16/09
83		Cables for 16 Strips ready @ WSU	5 days	Thu 4/16/09
84		Cables for 24 Strips ready @WSU	2 days	Thu 4/23/09
85		5 strips complete	2 days	Mon 4/27/09
86		12 strips complete	3 days	Wed 4/29/09
87		14 Strips complete	2 days	Tue 5/5/09
88		17 Strips complete	2 days	Thu 5/7/09
89		20 strips complete	2 days	Mon 5/11/09
90		24 strips complete	3 days	Wed 5/13/09
91				
92		SM Shipping	7 days	Mon 5/18/09
93		US SM at Grenoble	0 days	Tue 5/26/09
94				
95		Calibration at Grenoble	15 days	Wed 5/27/09
96				
97		US SM Ship to CERN	3 days	Thu 6/18/09



Strip Modules for EU SM#2

10 strips assembled

Fiber bundles shipped to Frascati

3mm fibers ready

Driver fibers completed – in QA testing



Scintillator Production continues “just in time”



Continuous 8 Modules per day

