

A NEW GENERATION OF SUPER YACHT BUILDERS IS DRIVING THE INDUSTRY TOWARD A MORE SUSTAINABLE BUSINESS MODEL. THIS MODEL HAS A NAME...

# WATEREVOLUTION

THE YACHTING INDUSTRY HAS A **SUBSTANTIAL ENVIRONMENTAL IMPACT**

## 1 CONSTRUCTION

The production of steel for yacht building is a **high-energy process**.

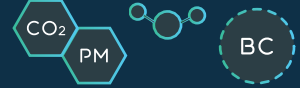
Pollutants:



## 2 SHIPPING

**High levels of CO<sub>2</sub> emissions, and impacts** from vessel maintenance and repair activities.

Pollutants:



## 3 DISMANTLING & RECYCLING

The final dismantling involves the **removal of toxic and hazardous materials**.

UP TO **95%** OF A SHIP IS VIRTUALLY



## HOW DOES WATEREVOLUTION WORK?

WATEREVOLUTION EMBRACES EVERY COMPONENT OF SUSTAINABLE DEVELOPMENT, DEMONSTRATING THAT NATURE CONSERVATION AND HUMAN PROGRESS ARE NOT MUTUALLY EXCLUSIVE.

1. Break down **every stage of the yacht production process** and the lifecycle of each product across the value chain.



2. Identify areas where savings can be made through **smarter construction**.



## COST SAVINGS AND REDUCED ENVIRONMENTAL IMPACTS

## TRANSFORMING AN INDUSTRY

1

THE MODEL HAS MADE POSSIBLE TO OPTIMIZE THE DESIGN CONCEPT AND PRODUCTION PROCESS BY THE **COMPUTATIONAL SUSTAINABILITY TOOL**.



**Up to 30% reduction** of CO<sub>2</sub> emissions and energy consumption



**Up to 10% reduction** of the shipyard costs.



A significant reduction of **operating and maintenance costs**.



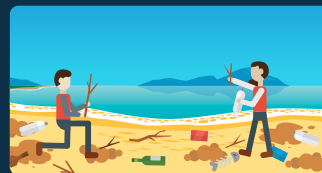
A measureable improvement in **seabed impact & water pollution**.

2

THE INDUSTRY EMBRACES **OCEAN RESPONSIBILITY** BY REINVESTING INTO **MARINE CONSERVATION PROGRAMS**. SO FAR WATEREVOLUTION HAS SUPPORTED:



A project that has updated the research on **Pelagos Sanctuary**, a protected area extending about 90.000 km<sup>2</sup> in the north-western Mediterranean Sea.



**Marine conservation and environmental education** activities such as building awareness about plastic pollution and communication campaigns for ocean sustainability.



The **IUCN Joint WCPA-SSC Marine Mammal Protected Areas Task Force** work for the establishment of Important Marine Mammal Areas and conservation of biodiversity in the High Seas.



"WE ARE DETERMINED TO TAKE THE BOLD & TRANSFORMATIVE STEPS WHICH ARE URGENTLY NEEDED TO SHIFT THE WORLD ONTO A SUSTAINABLE AND RESILIENT PATH... AS WE EMBARK ON THIS COLLECTIVE JOURNEY, WE PLEDGE THAT NO ONE WILL BE LEFT BEHIND."