



Istituto Nazionale di Fisica Nucleare
Sezione di Roma Tre

ARSMENSURAE

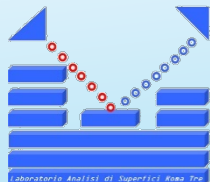
Progetto MU.S.A. (MULTichannel Scanner for Artworks)

L. Tortora – Laboratorio Analisi di Superfici - INFN Roma Tre

S. Ridolfi – Ars Mensurae srl

luca.tortora@uniroma3.it

stefano@arsmensurae.it



ROMA
TRE
UNIVERSITÀ DEGLI STUDI



E-RIHS

EUROPEAN RESEARCH INFRASTRUCTURE
FOR HERITAGE SCIENCE

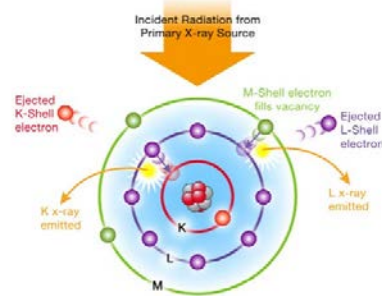
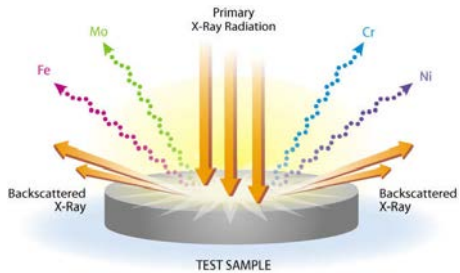


Regione Lazio e l'Arte Diffusa



MULTichannel Scanner for Artworks

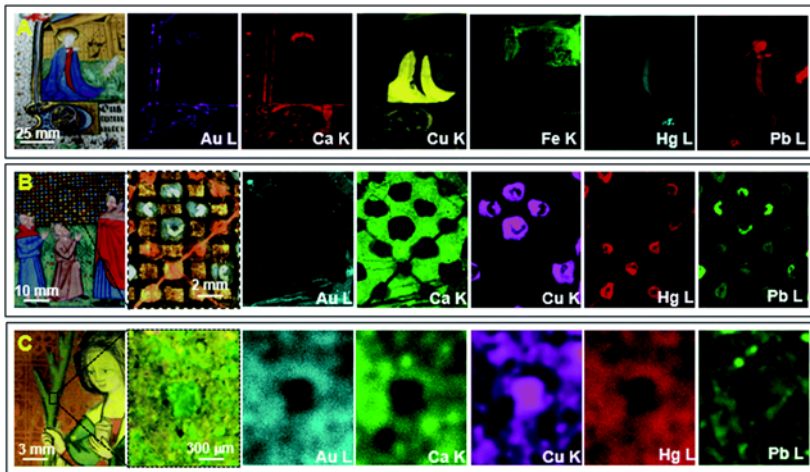
Analisi XRF (X ray Fluorescence)



XRF **Portatile** no scanner



Analisi XRF scanner

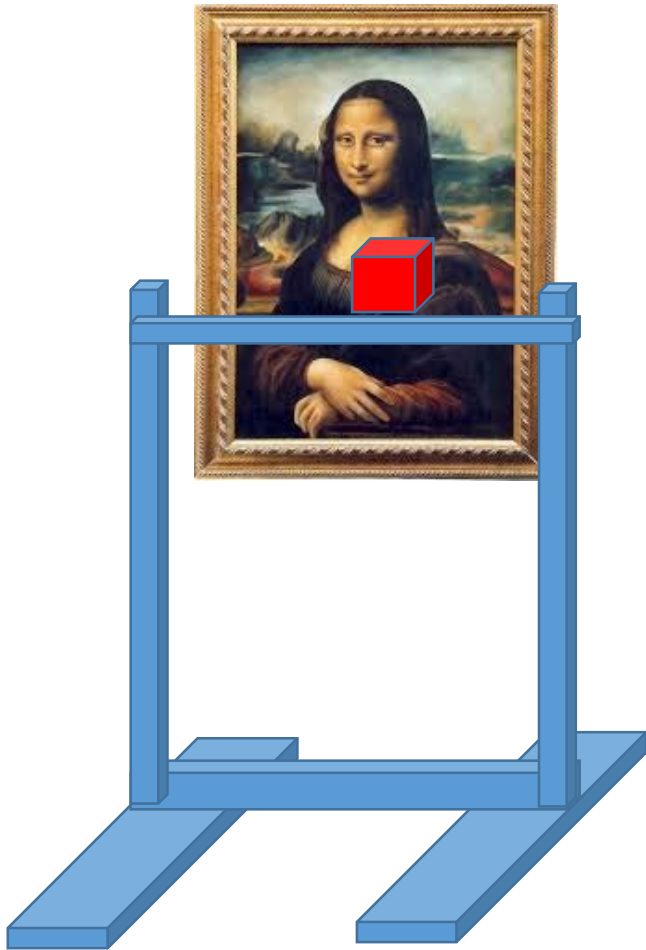


XRF **Scanner** no portatile

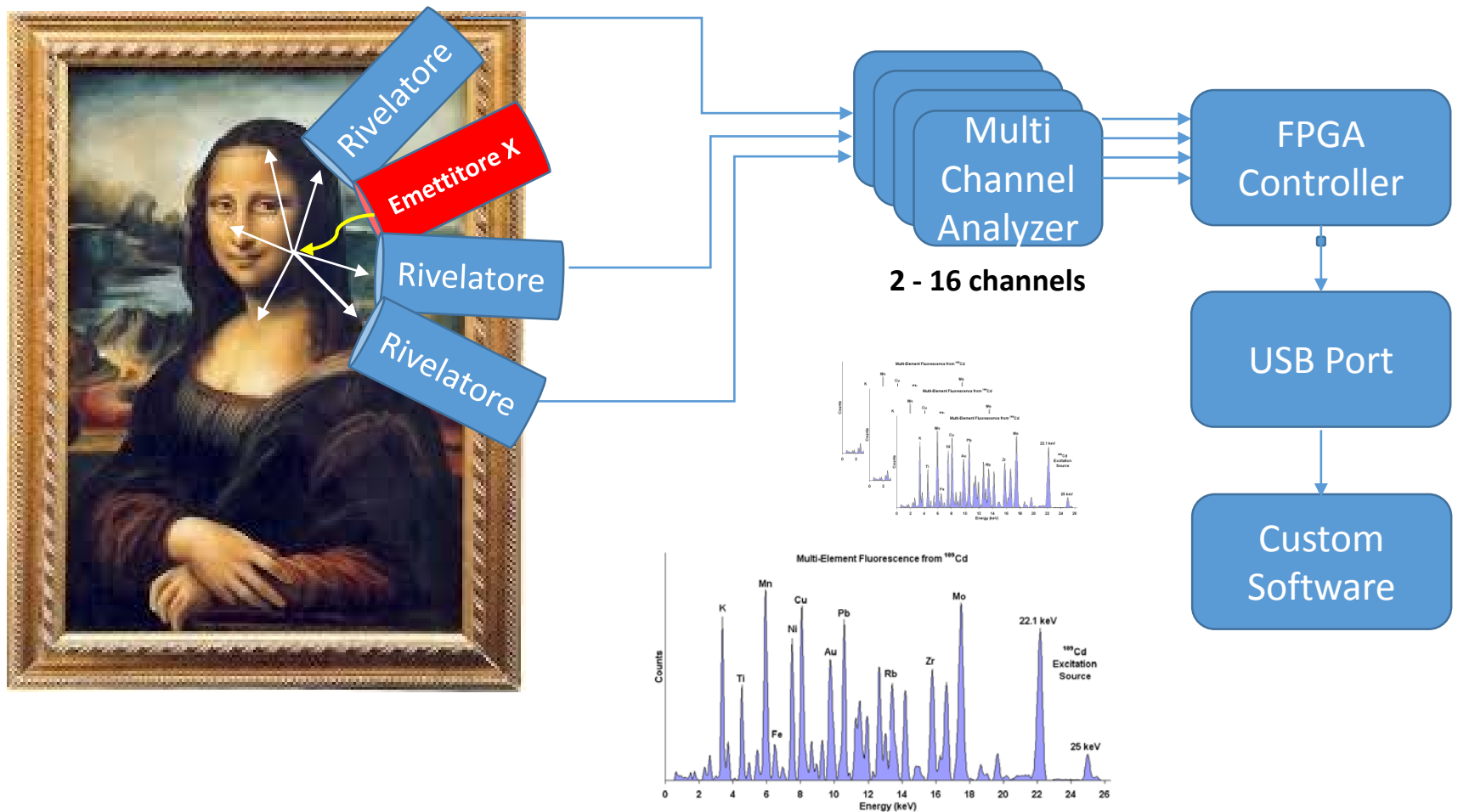


Multiscale X-ray fluorescence mapping complemented by Raman spectroscopy for pigment analysis of a 15th century Breton manuscript
K. V. Manukyan, B. J. Guerin, E. J. Stech, A. Aprahamian, M. Wiescher, D. T. Gura and Z. D. Schultz

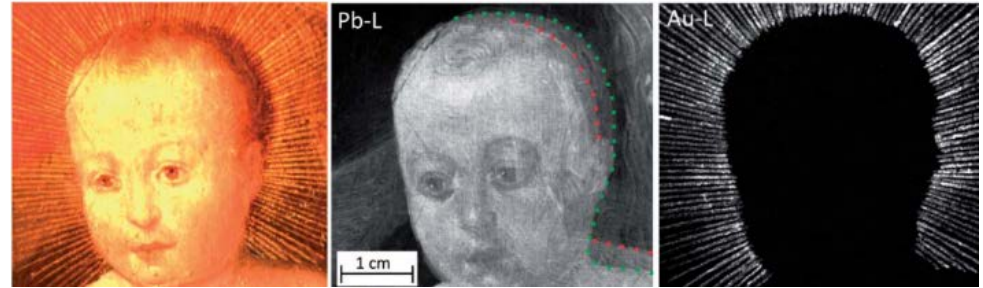
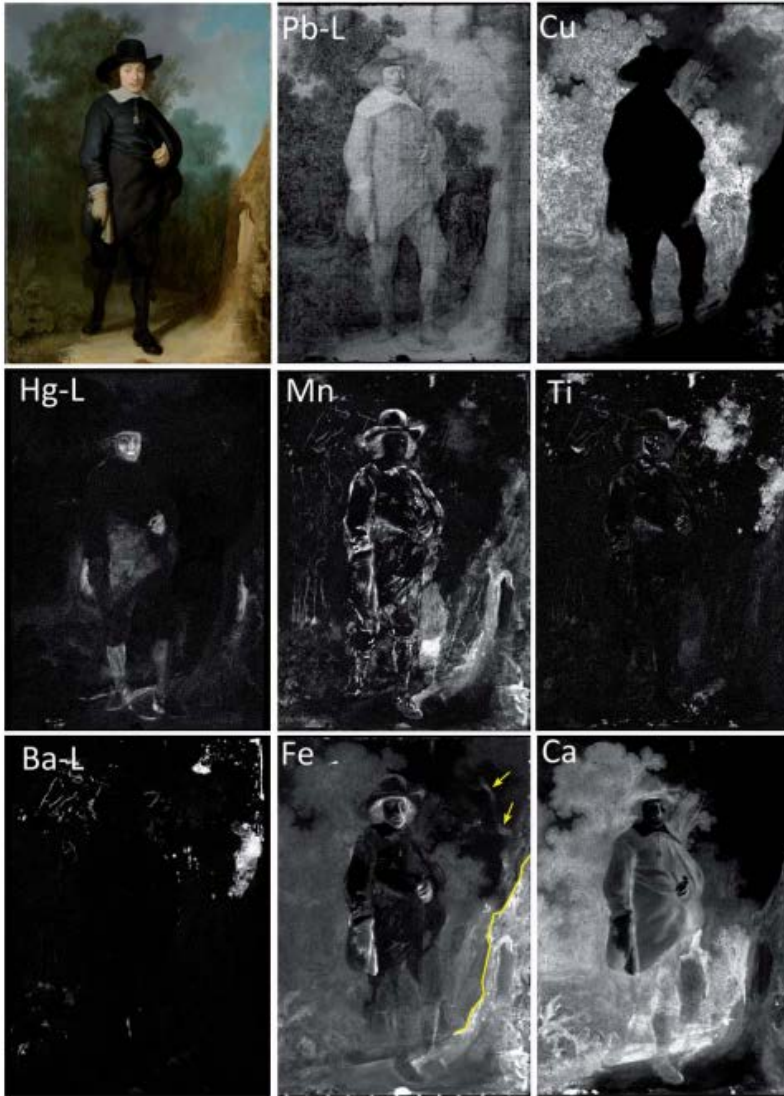
Multichannel Scanner for Artworks



Multichannel Scanner for Artworks



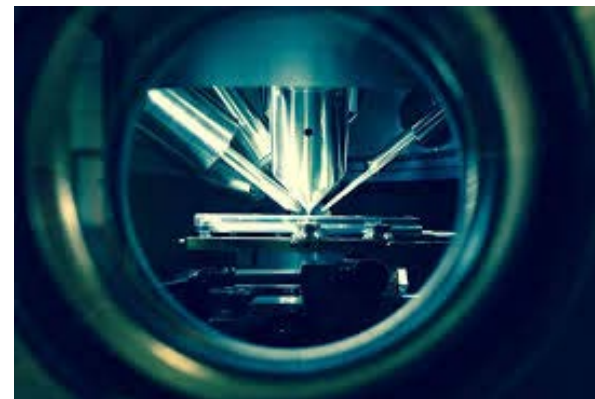
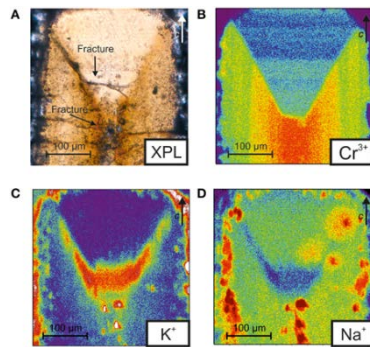
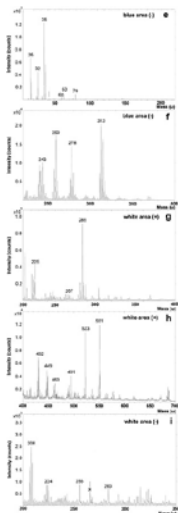
Cinti, M.N., Pani, R., Bennati, P., Pellegrini, R., Scafè, R., Fabbri, A., Orlandi, C., Ridolfi, S.
(2012) IEEE Nuclear Science Symposium Conference Record, art. no. 6154657, pp. 1665-1668.



Pb = Biacca (PbCO_3)₂ · Pb(OH)₂ **Ripensamenti**
 Hg = Vermiglione-cinabro HgS
 Ti= Titania TiO₂ Non prima del 1920 -> **Restauro**
 Cu = Verde a base di rame
 Mn = Terra d'ombra MnO₂ **Tracciato**
 Ba= Pigmento moderno -> **Restauro**
 Fe = Ocra rossa ossido di Fe **Ripensamenti**
 Ca = Intonaco CaCO₃ e gesso CaSO₄·2H₂O

M Alfeld, J Vaz Pedroso, M van Eikema Hommes, G Van der Snickt, G Tauber, J Blaas, M Haschke, K Erler, J Dikb and K Janssens J. Anal. At. Spectrom., 2013, 28, 760

Realizzazione e caratterizzazione standard



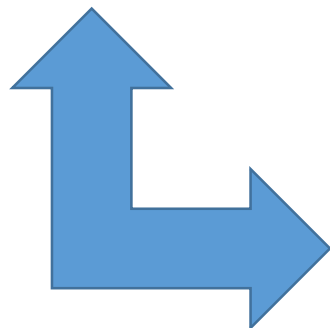
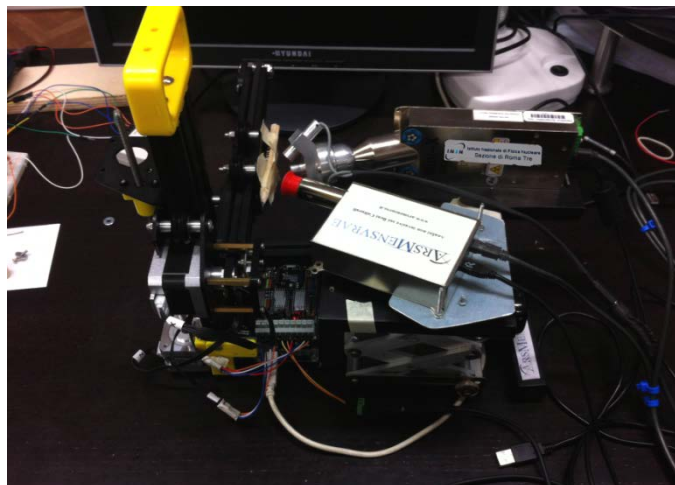

G. Ingo

Il prototipo ed il perchè di esso

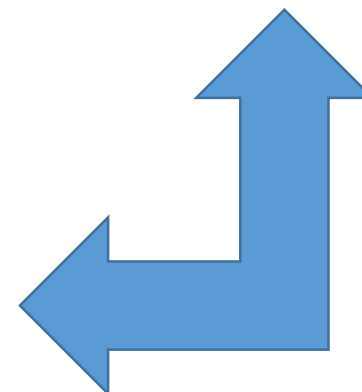
 Istituto Nazionale di Fisica Nucleare
Sezione di Roma Tre



LA GALLERIA
NAZIONALE



ARSMENSVRAE



Partners



E. Bernieri, P. Biocca, P. Branchini, A. Fabbri, E. Graziani, L. Tortora



S. Ridolfi



G. Ingo

*Con:
Galleria Nazionale d'Arte Moderna e Contemporanea (GNAM), Roma*