

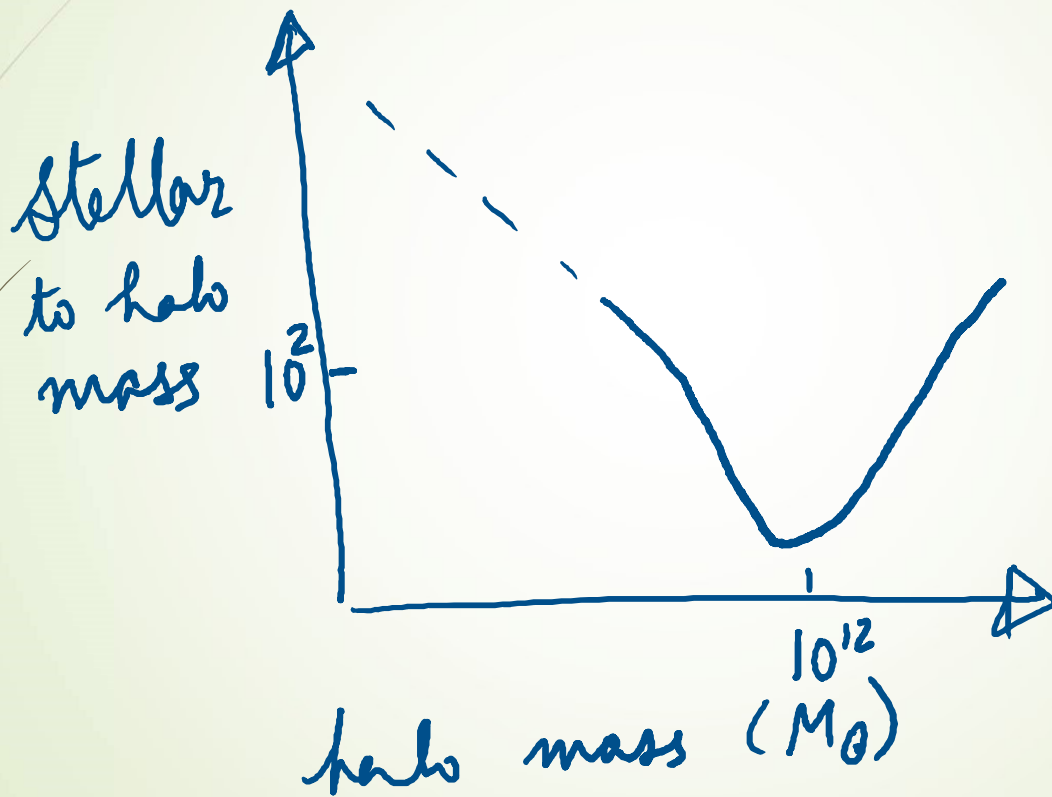


Invitation to a holistic discussion on dwarfs

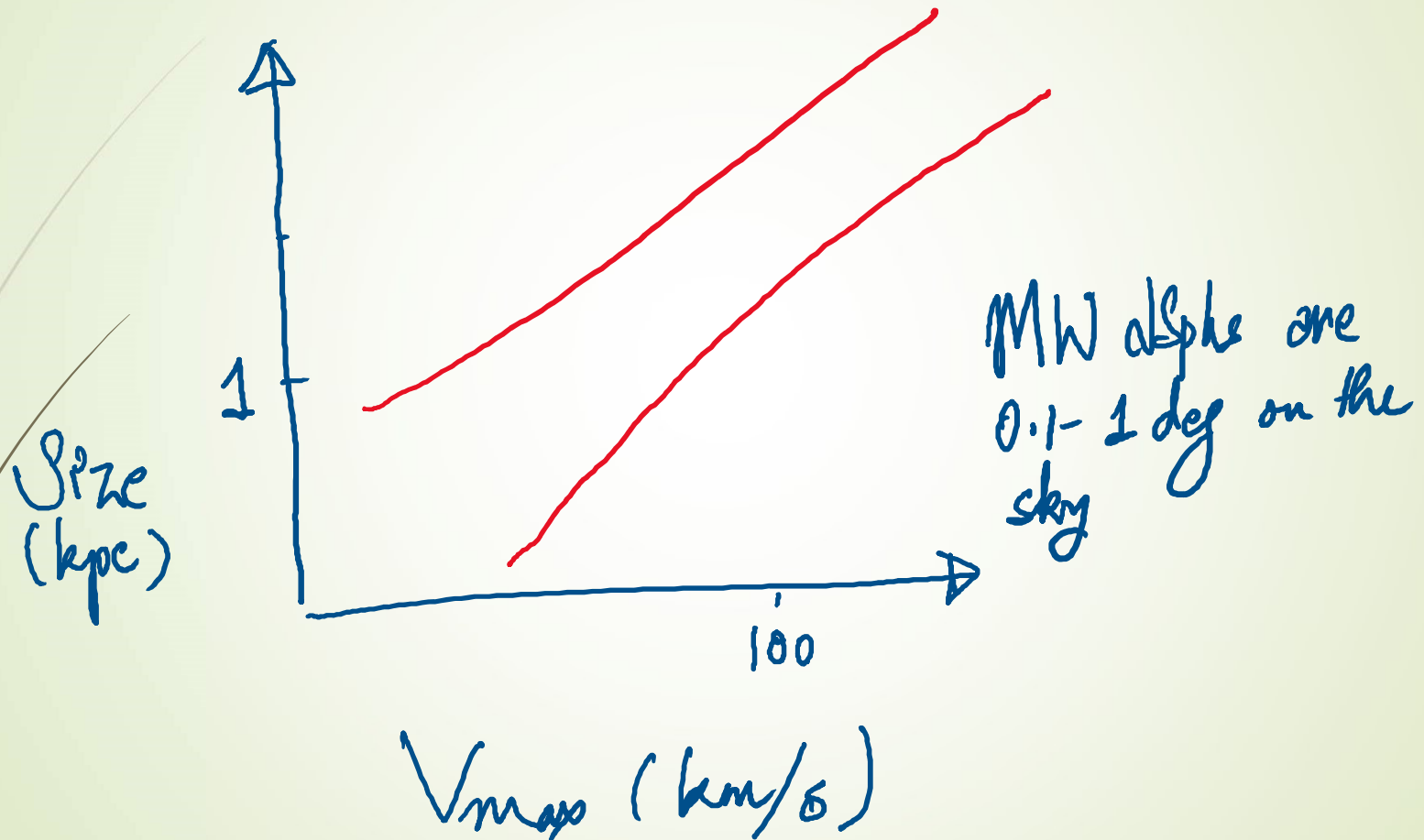
Manoj Kaplinghat

University of California, Irvine

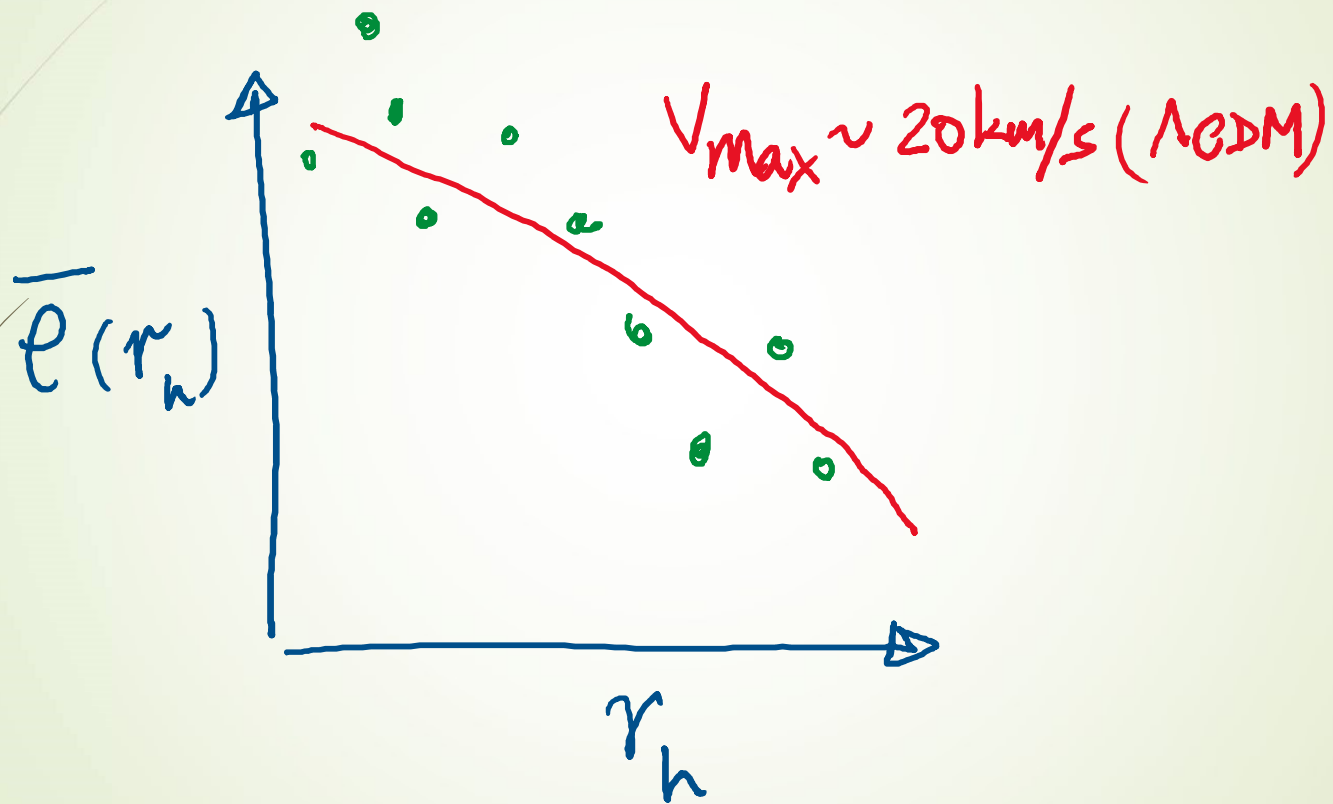
Why are they so dark?



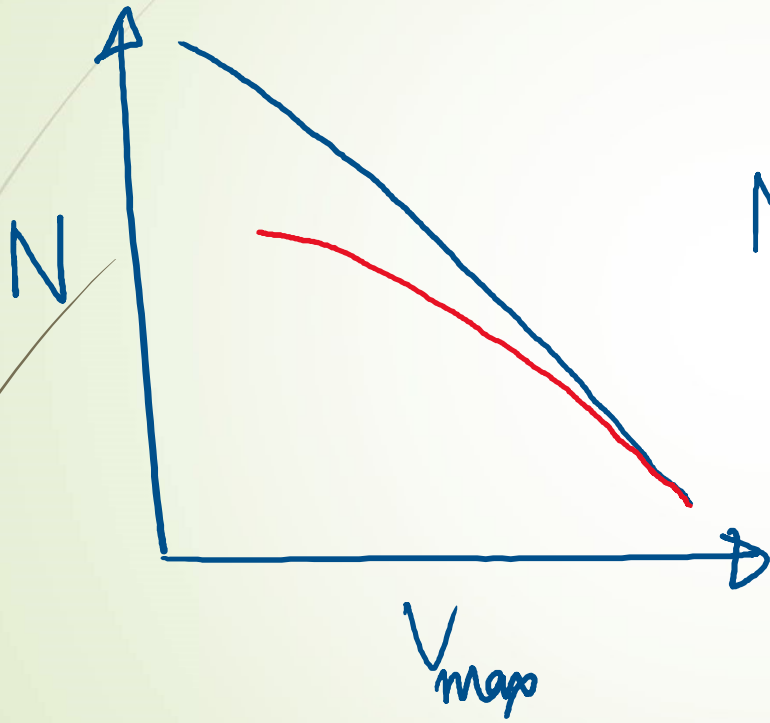
What sets their sizes?



What sets their densities?




How many?

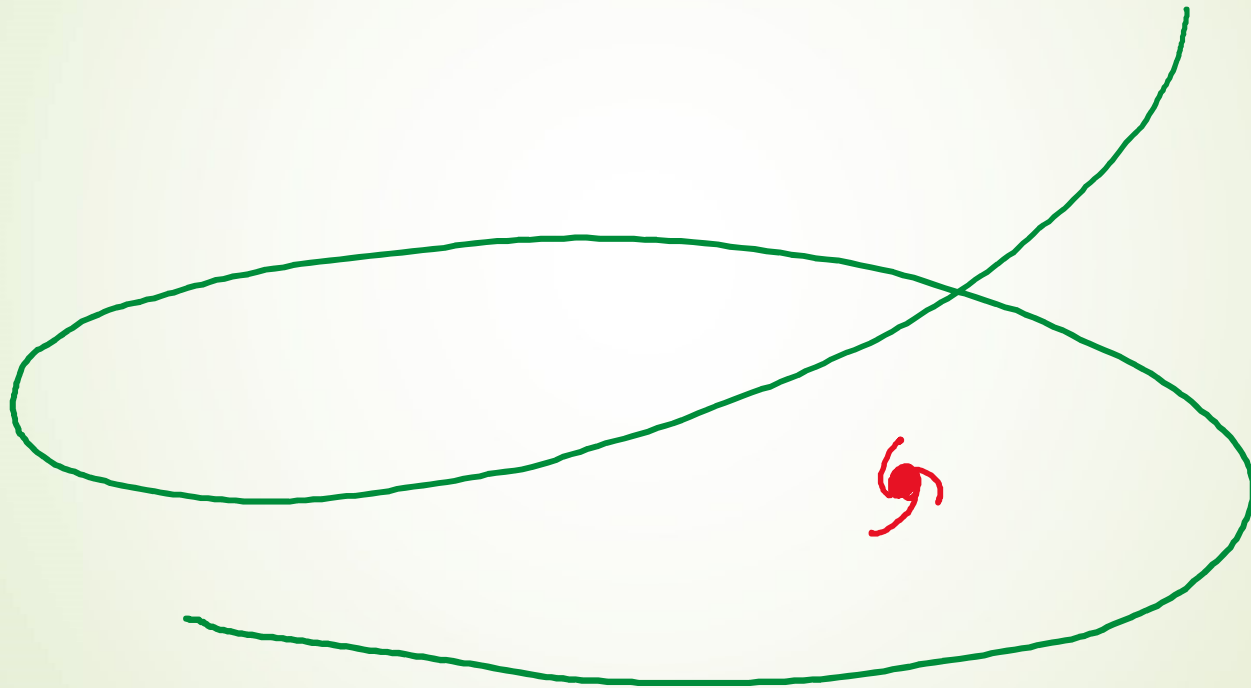


M_*

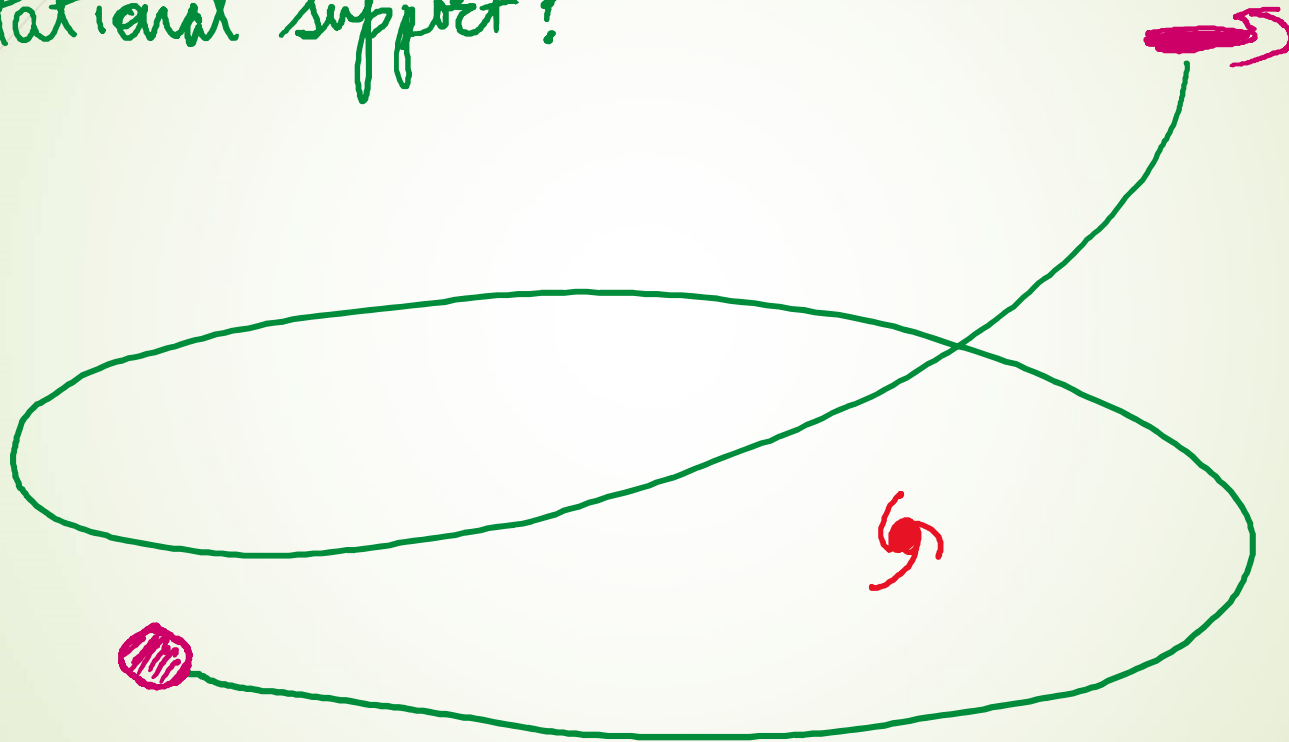




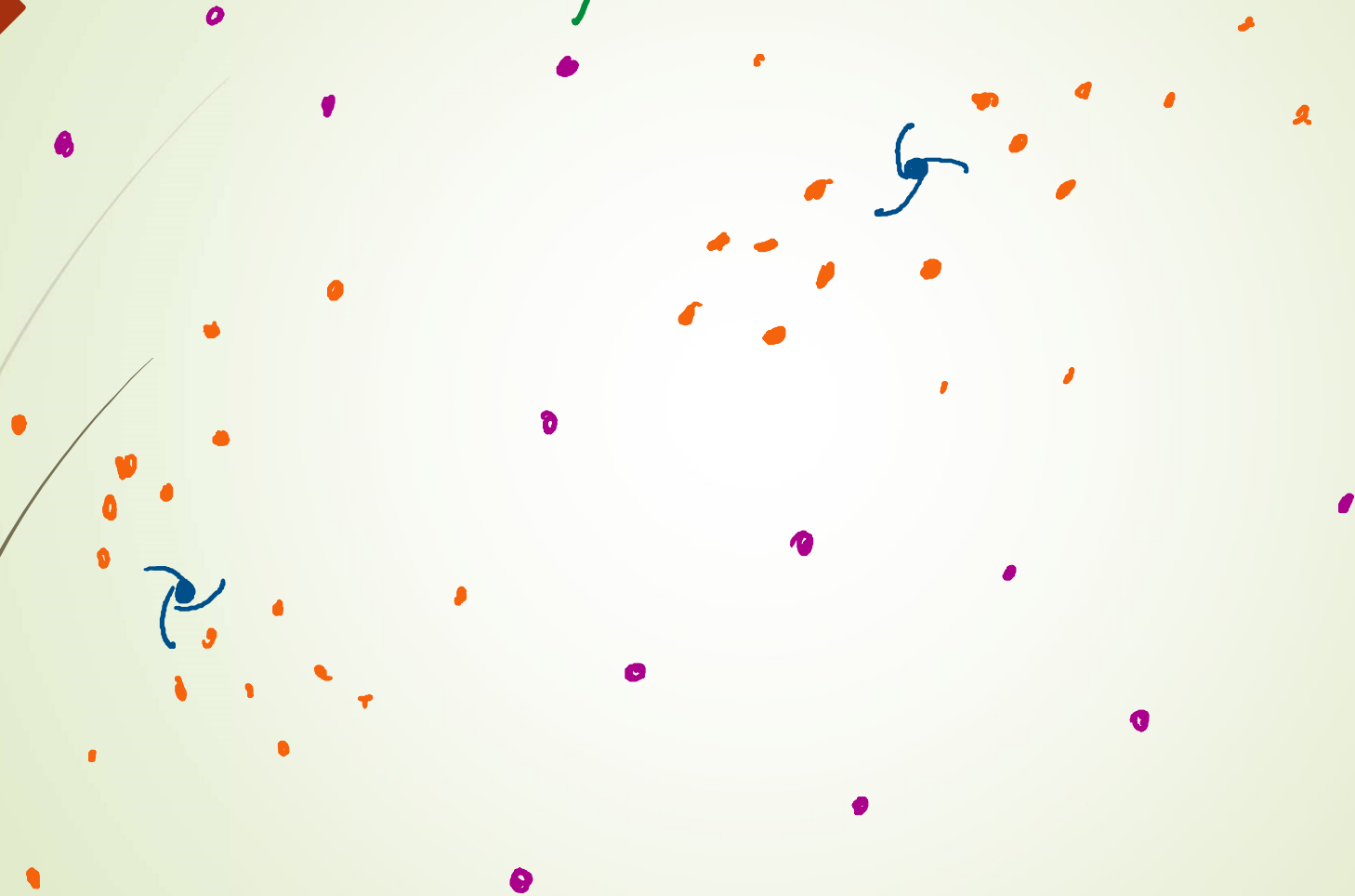
Do we understand their
star formation histories?



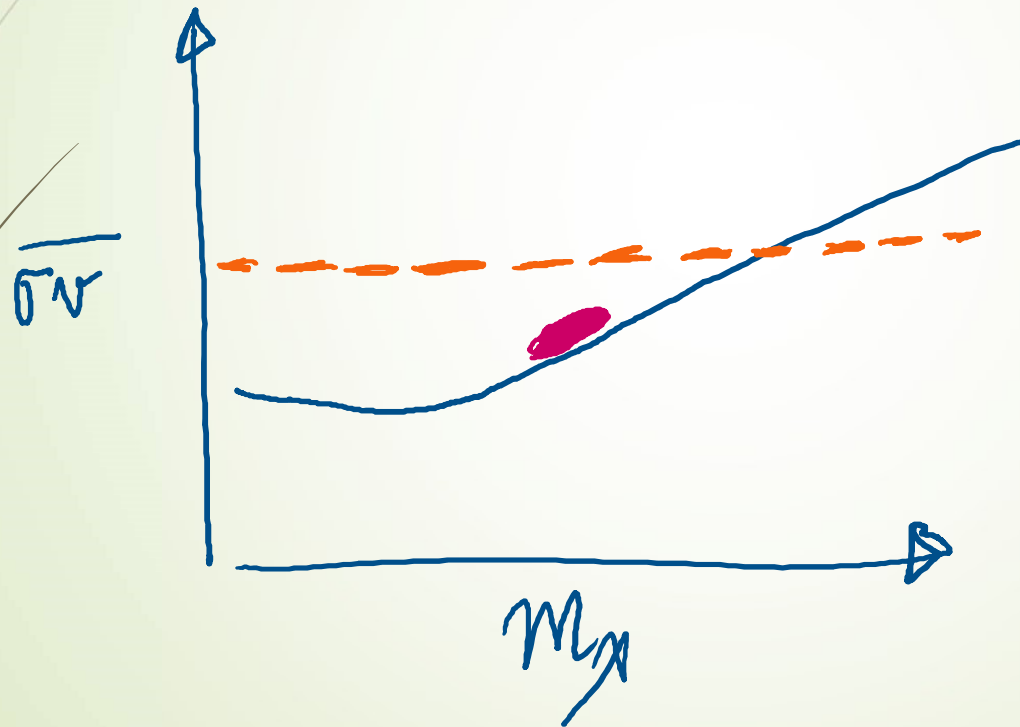
Why do they have so little rotational support?



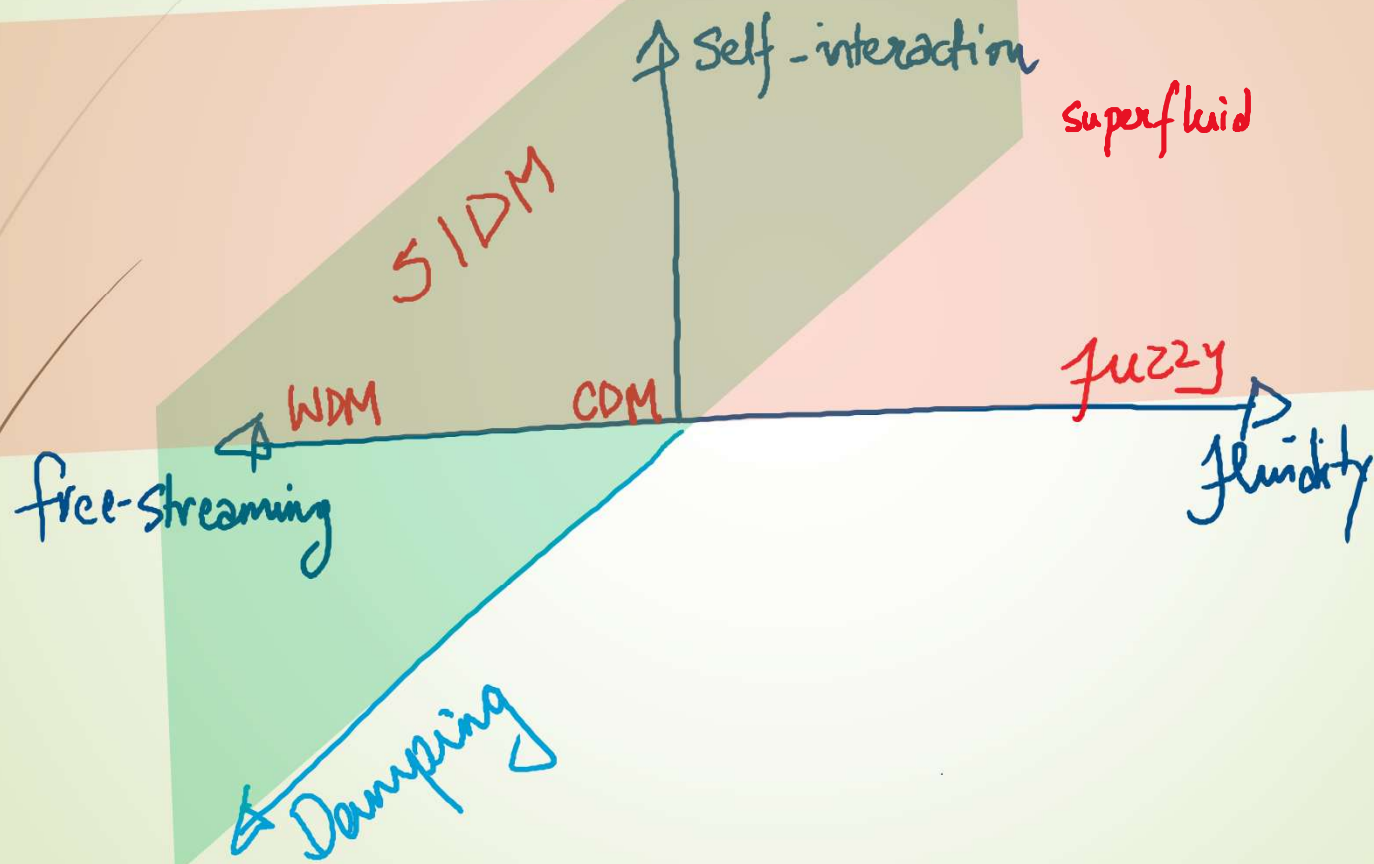
How are they distributed?



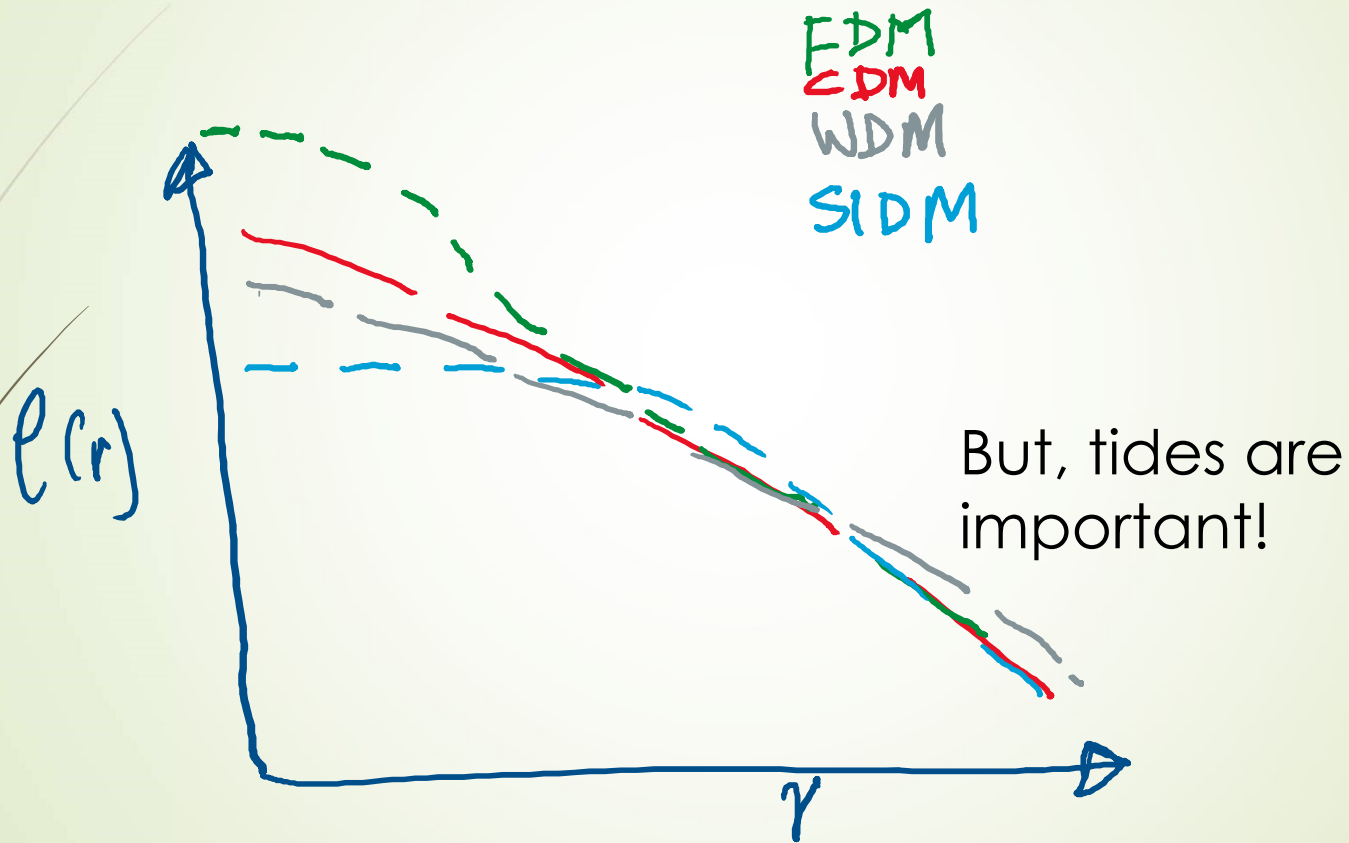
How robust are the constraints from dSphs on particle physics models?



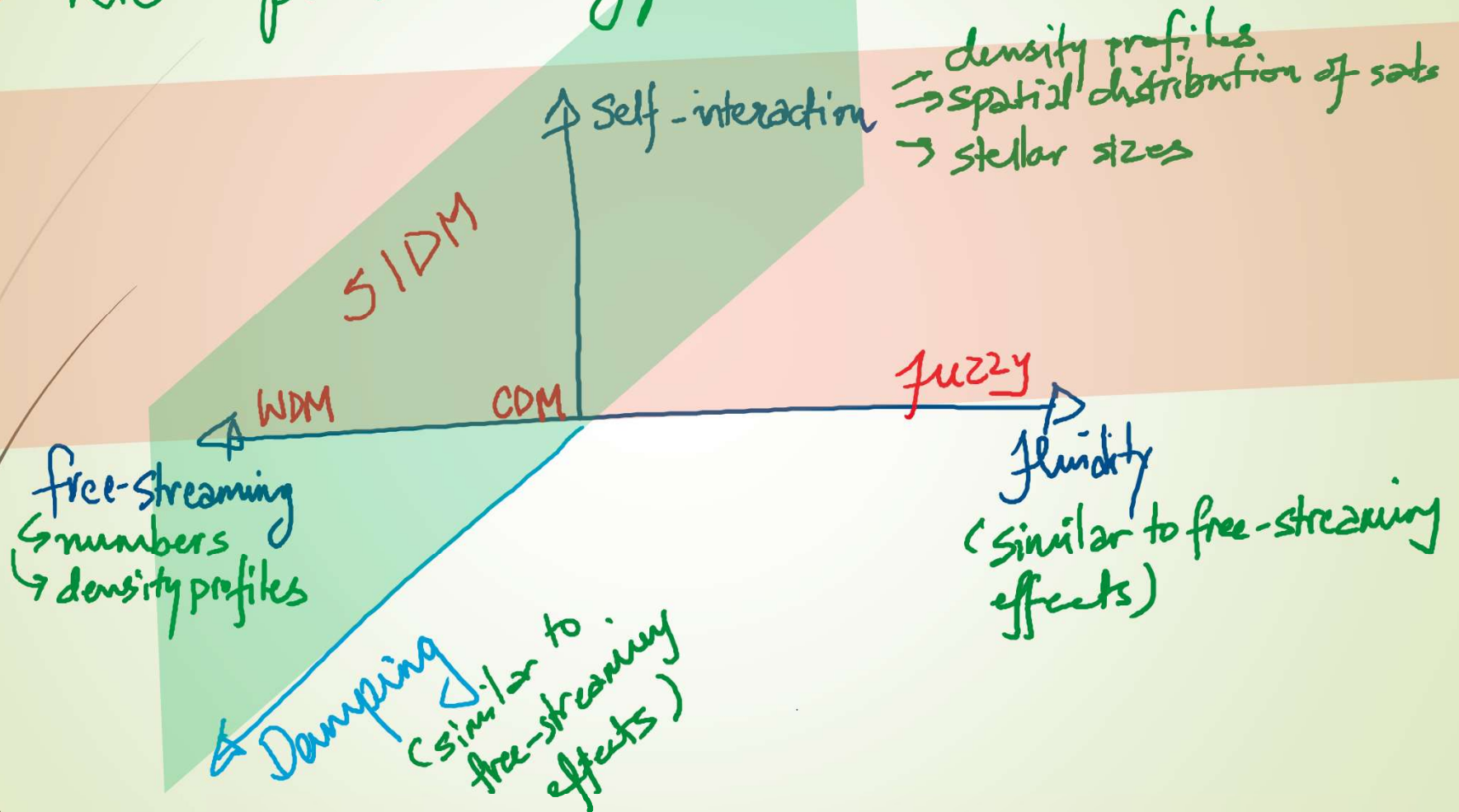
Dark matter models



Density profiles



Rich phenomenology



Living on the edge ...

