

# **M5L on-demand CAD Service**

Piergiorgio Cerello (INFN)

# M5L on-demand CAD Service

Automated lung nodule detection in chest CT scans

Accessible via web interface front-end

Cloud back-end

Results in several formats (txt, pdf, xml, DICOM Chest)

## Advantages

No HW/SW installation @ health facilities using M5L  
easy to use

## Features

on-line annotation

several possible extensions to the functionality

Undergoing clinical validation @ IRCCS Candiolo

# M5L on-demand CAD Service

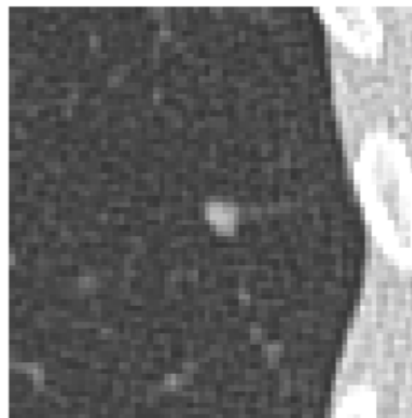
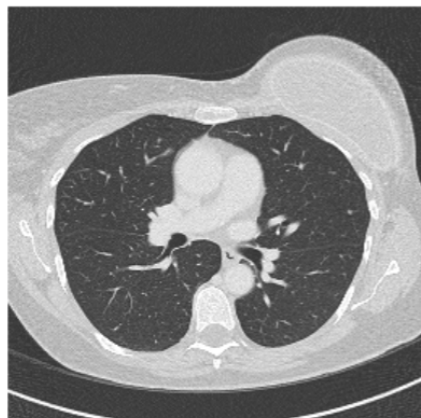
CASE ID	Submitter	Date	Annotations	Status
03_23032016_lv [field_case_upload_file]	atraverso	19/05/2016		CAD Success CAD Results
01_23032016_lv [field_case_upload_file]	atraverso	19/05/2016		CAD Success CAD Results
10_30032016_lv [field_case_upload_file]	atraverso	19/05/2016		CAD Success CAD Results
04_23032016_lv [field_case_upload_file]	atraverso	19/05/2016		CAD Success CAD Results

1. Tracking Identifier = "Nodule # 1"

1.7

**Properties:**

- Center: (421 px, 253 px) (103.7 mm, -146.4 mm)
- Slice: 93, Z-Position: -639.8 mm
- Diameter = 30.0 mm
- Certainty of Feature: 76%

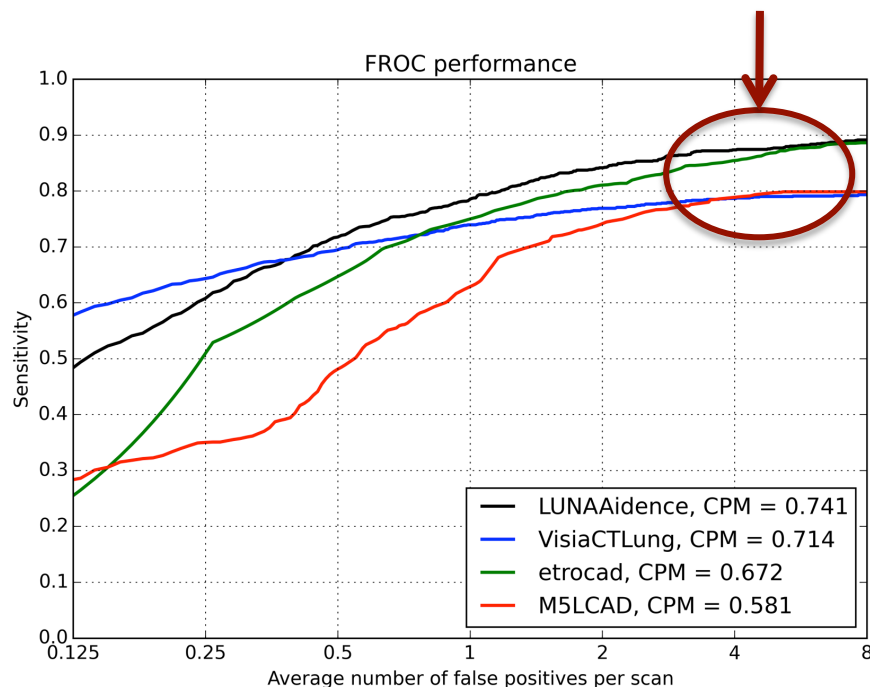


# M5L on-demand CAD Service

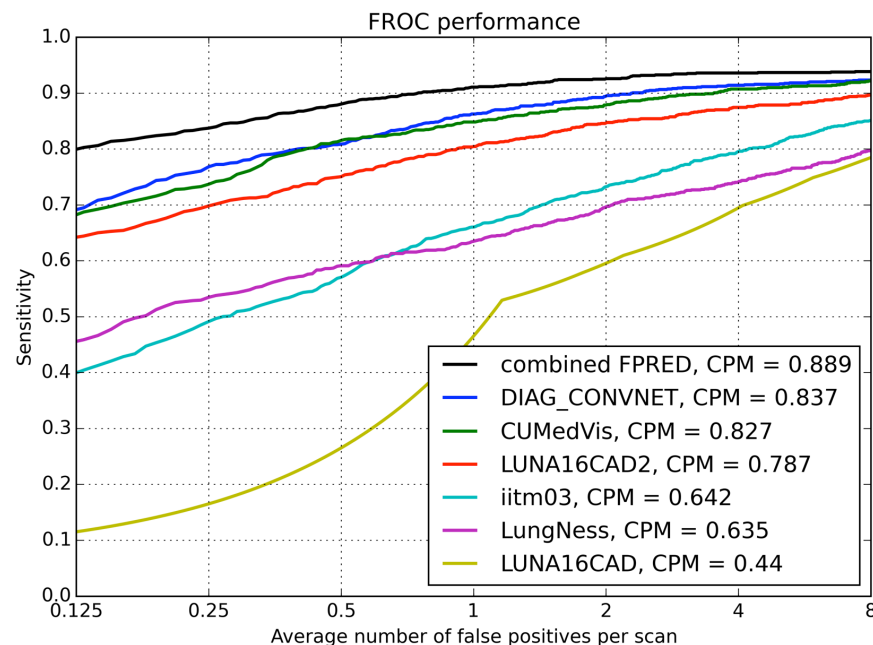
LUNA16 international challenge: 888 scans

Single CADs  
performance

Radiologists  
work here



Combined FP  
reduction



Possible evolution:

- Startup to provide a commercial service in Italy/Europe