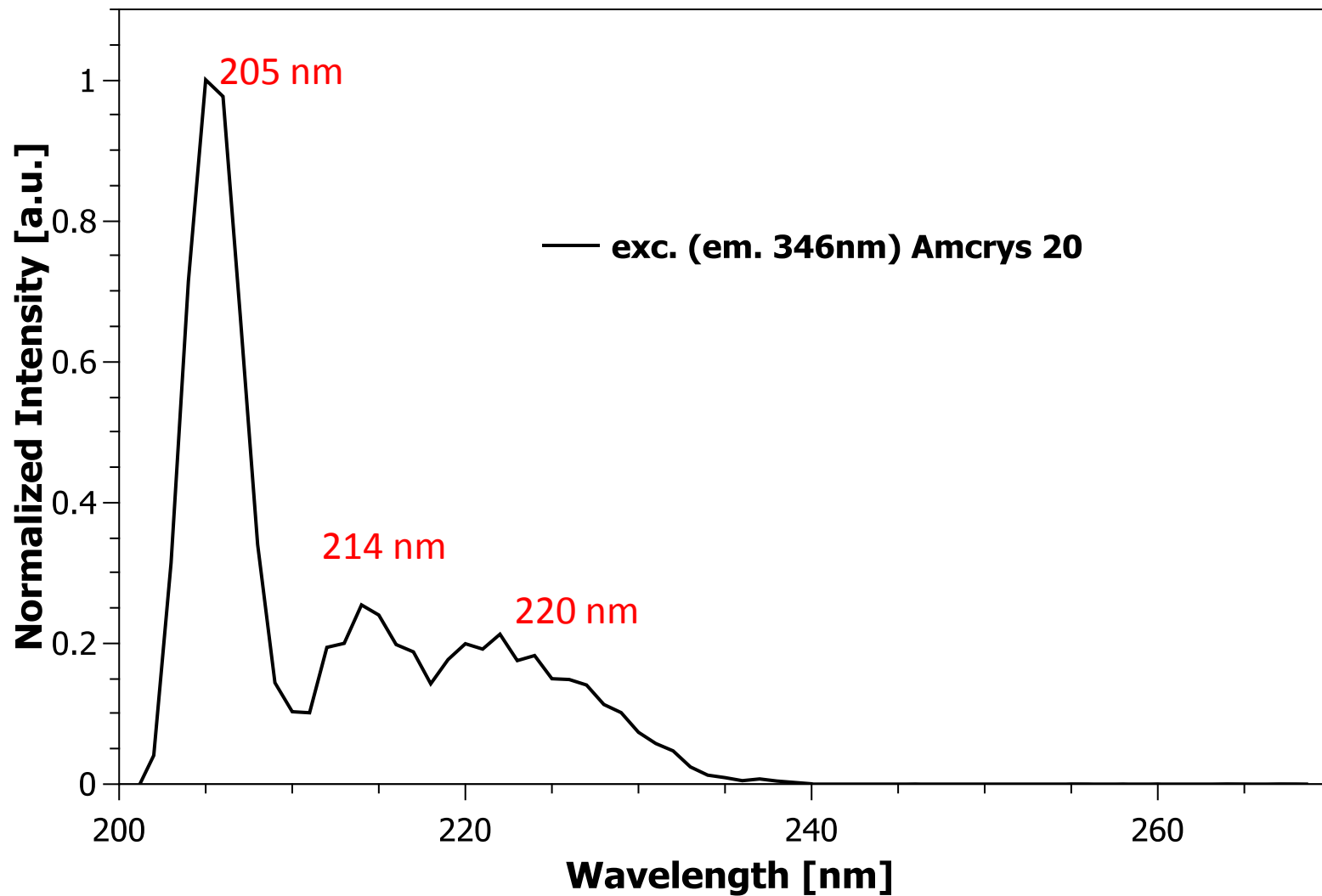
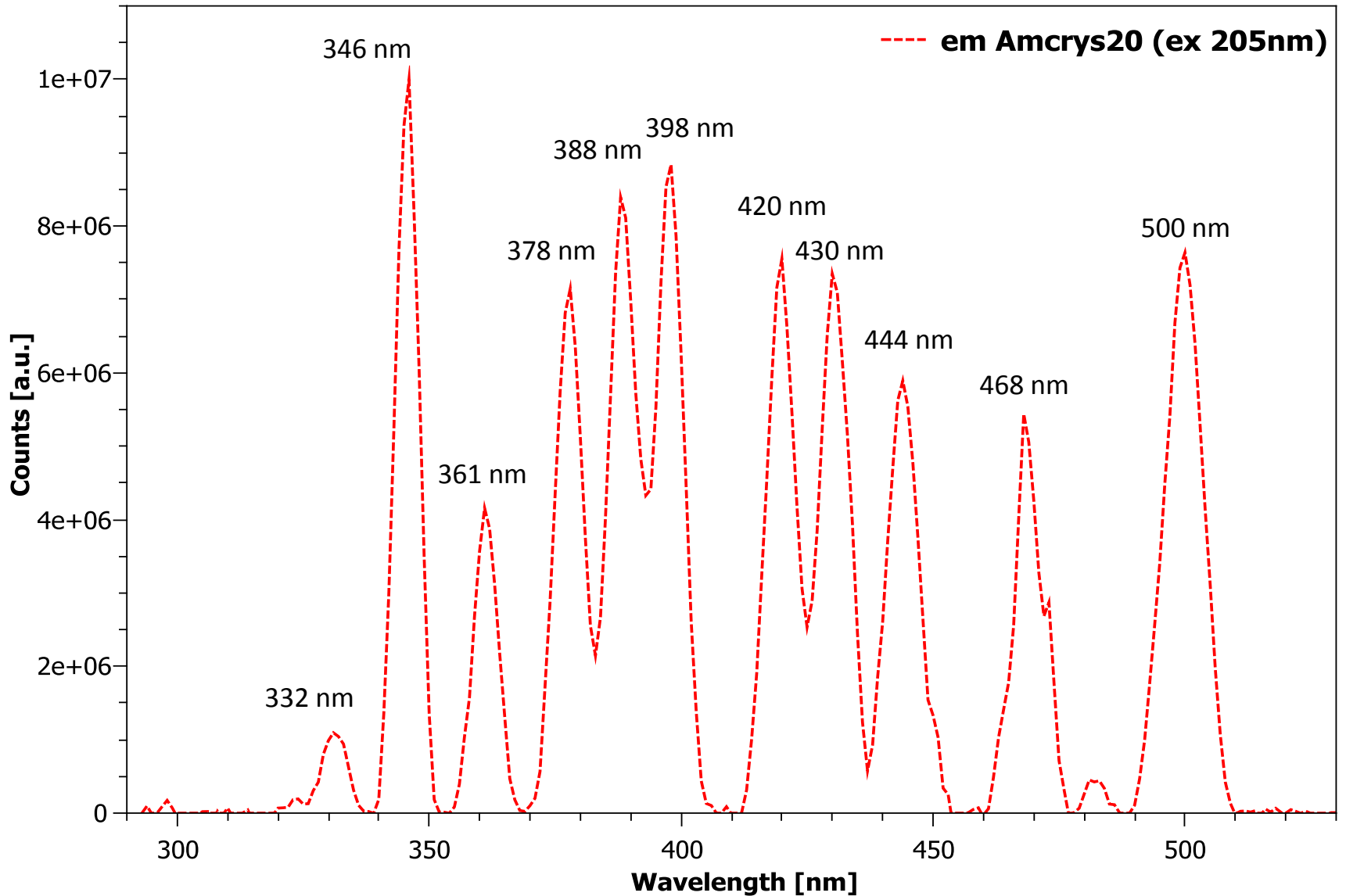


Excitation spectrum Csl Amcrys20 (em 346nm)

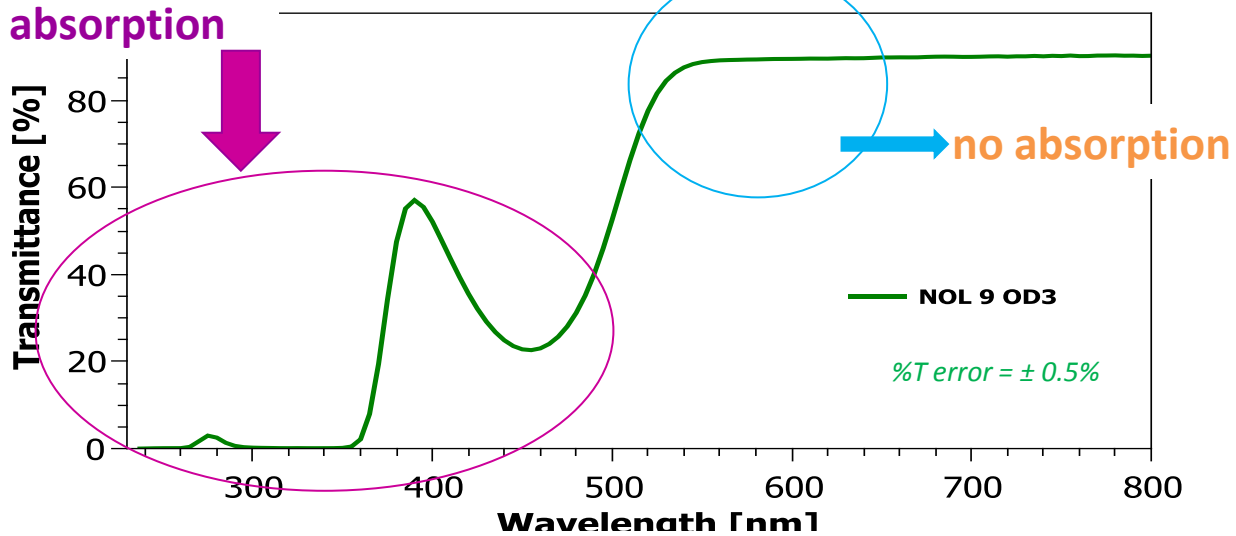
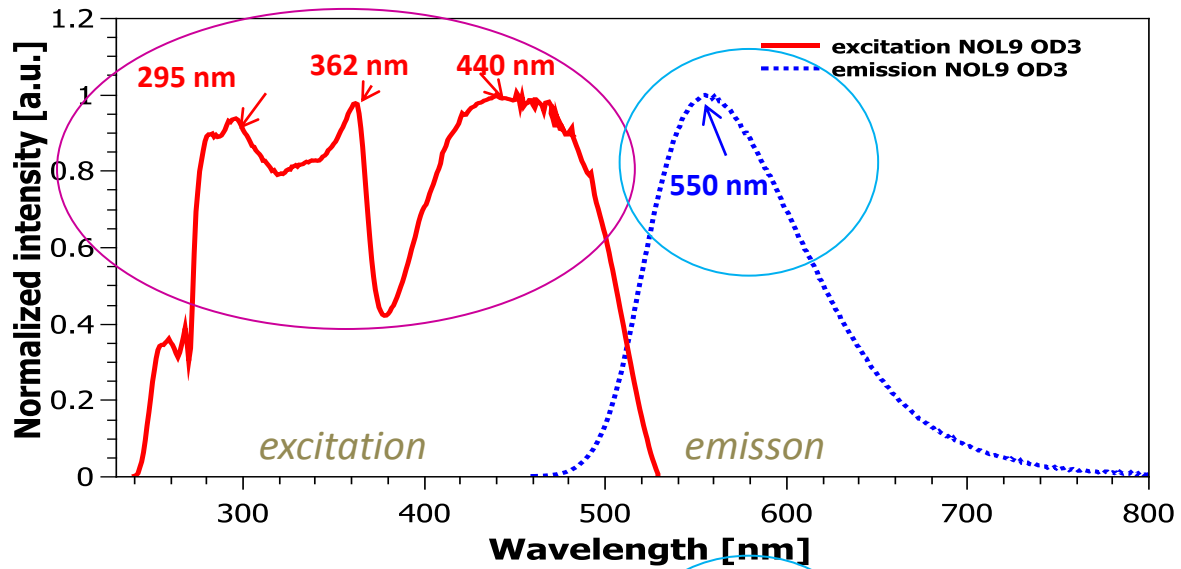


Emission spectrum CsI Amcrys20 (ex 205nm)



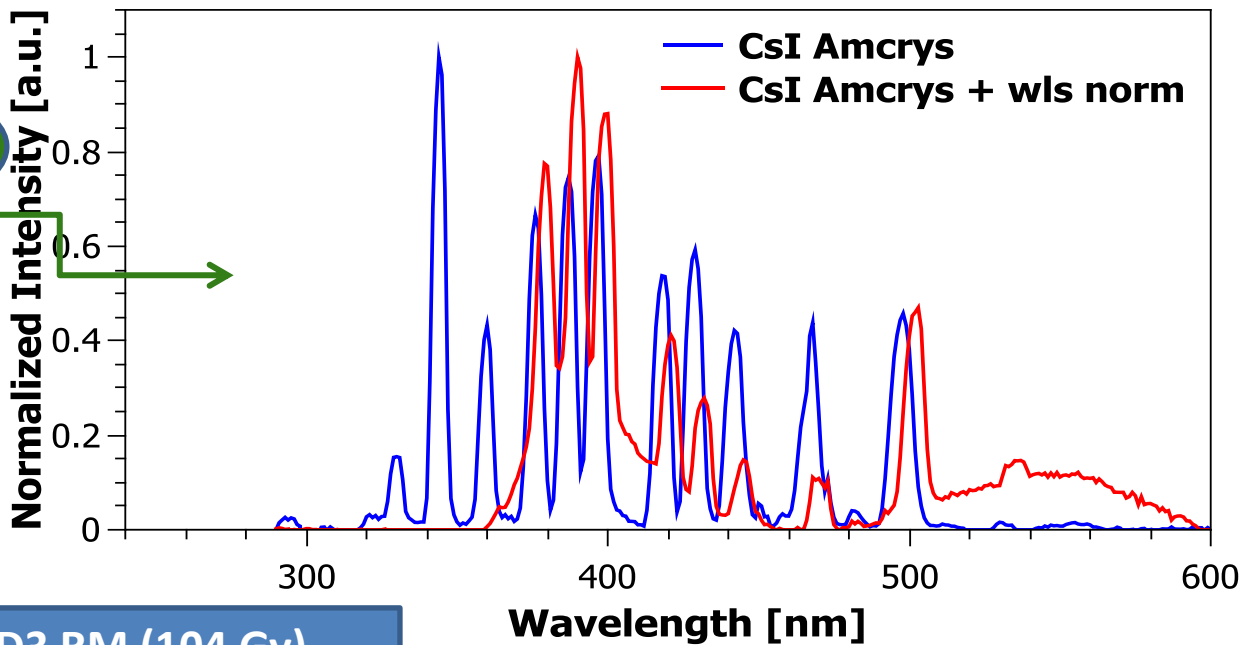
Wavelength shifter

NOL9 OD3 RM (104 Gy)

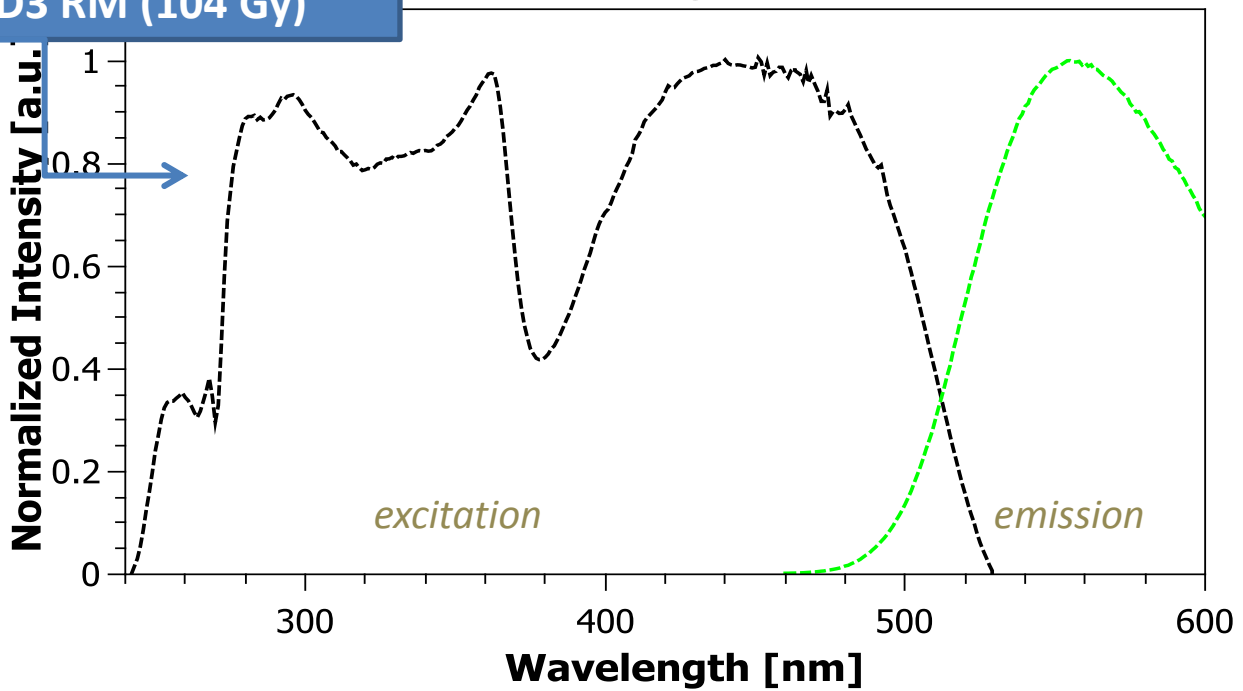


Pure CsI (not irr.) and wls NOL9 OD3 RM (104 Gy)

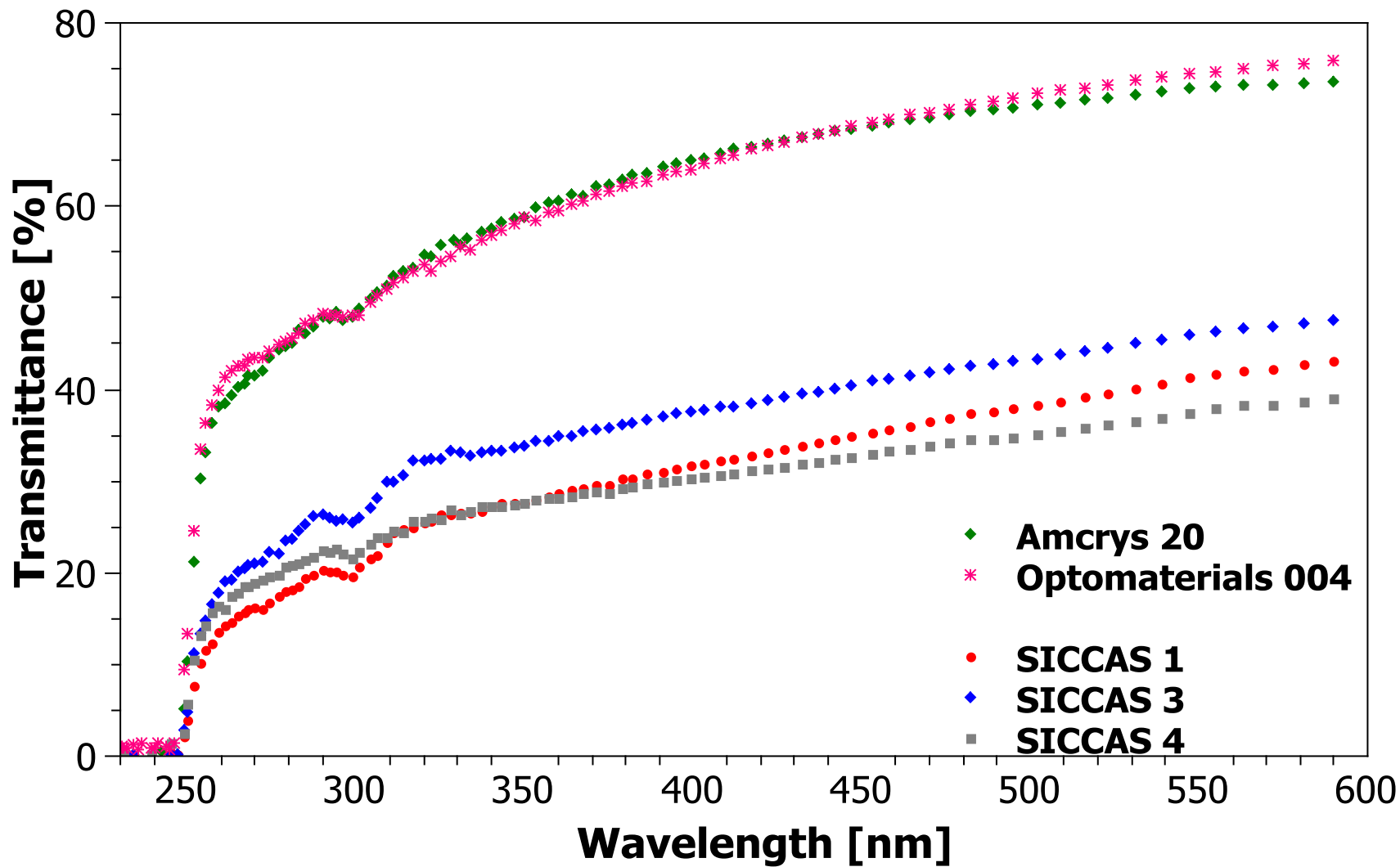
Emission spectra



NOL9 OD3 RM (104 Gy)



Pure CsI Longitudinal transmittance (different manufacturers)



Pure CsI SICCAS



Pure SICCAS_1 CsI (not irr.) and wls NOL9 OD3 RM (104 Gy)

