

## *The ELIMED Collection and selection System*

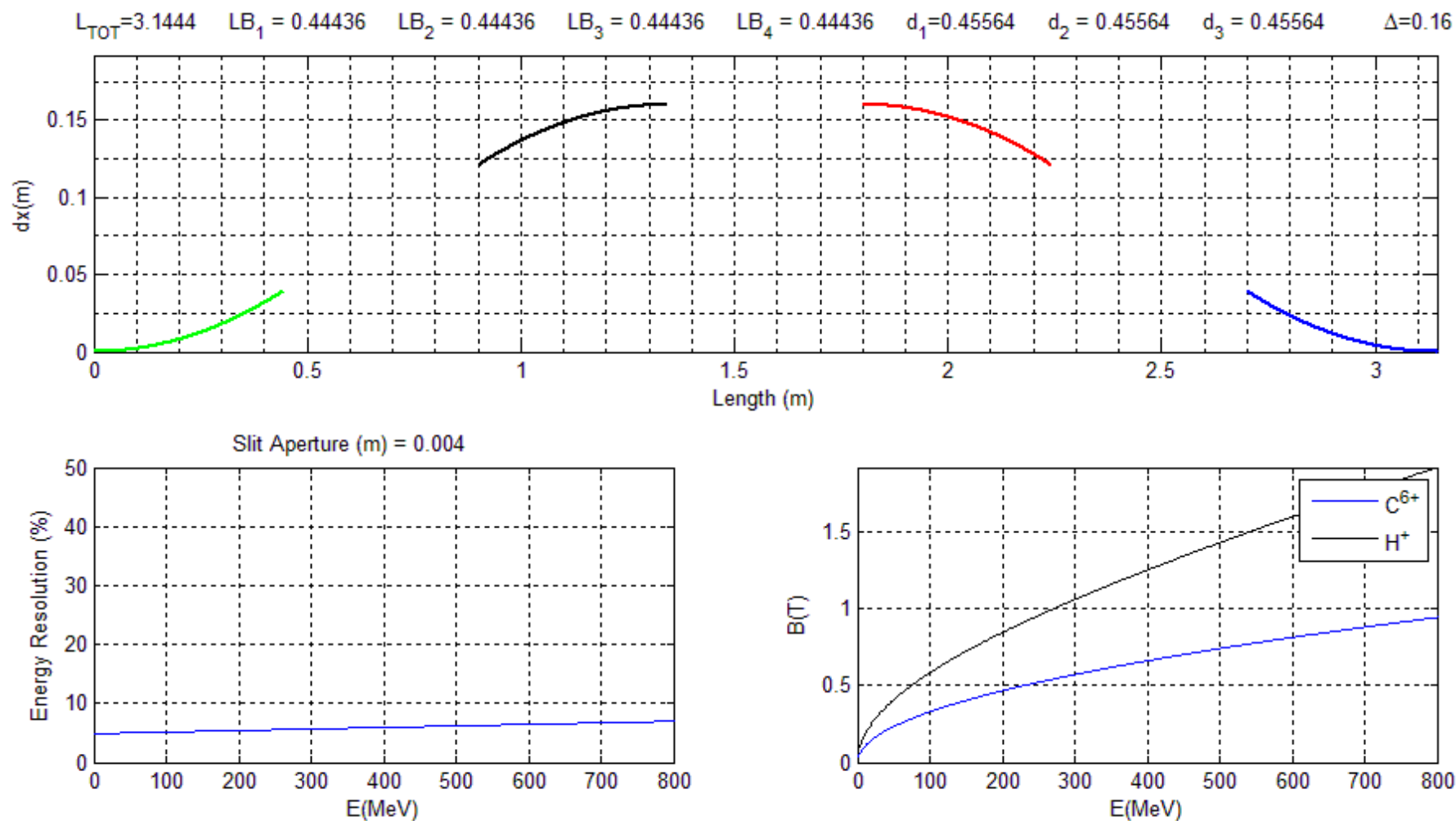


*F. Schillaci, M. Sedita*

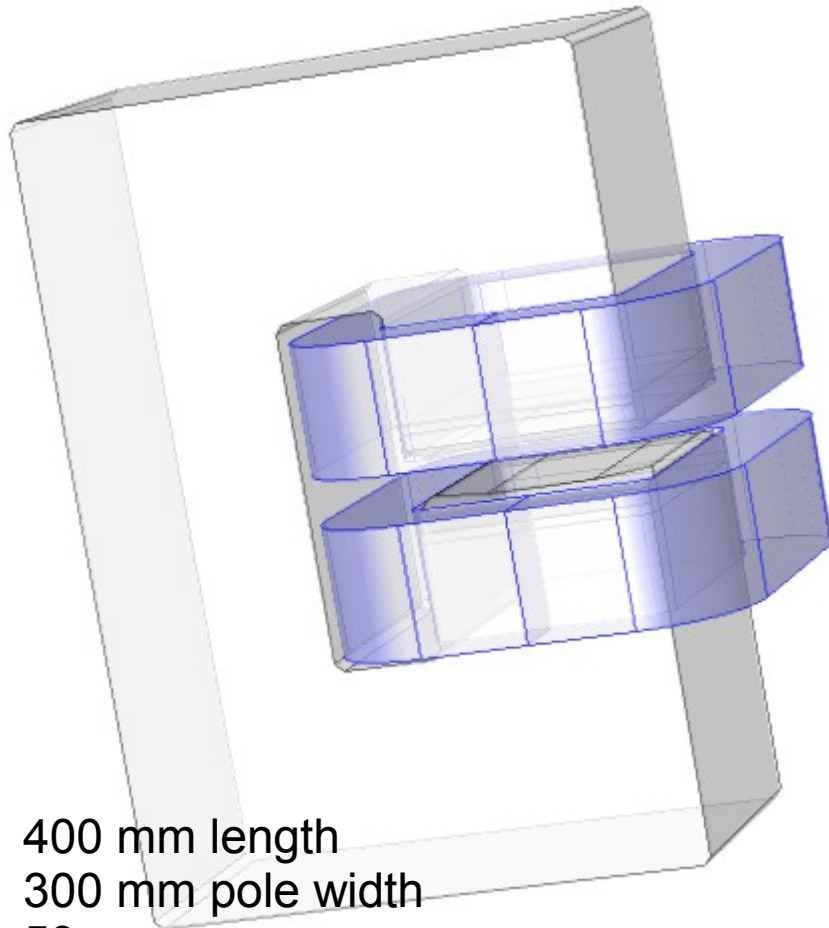
*Catania 4-8-2015*

# Beam transport

## ESS Features

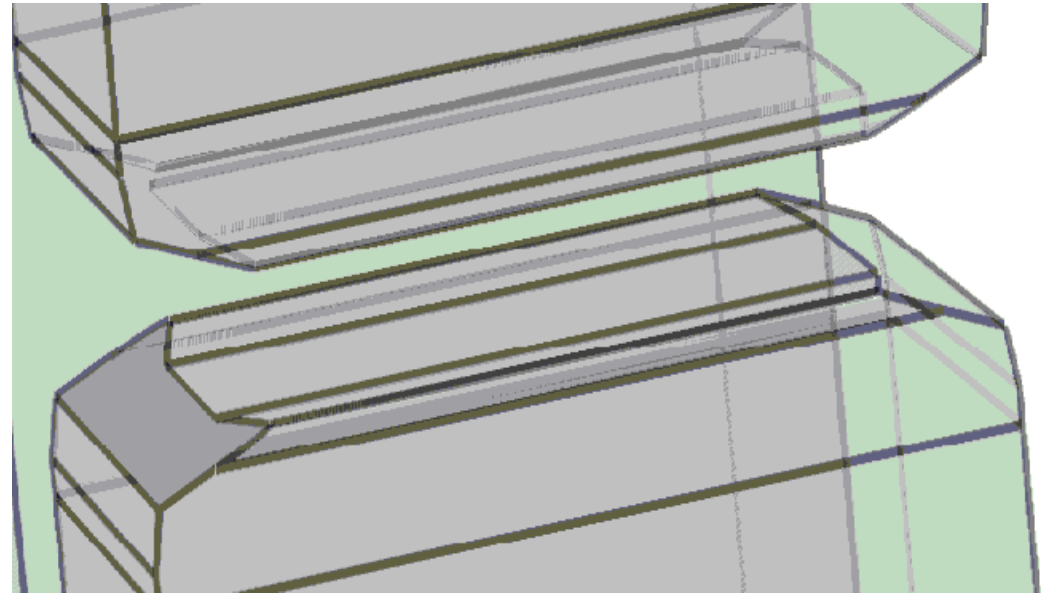


# Beam Transport



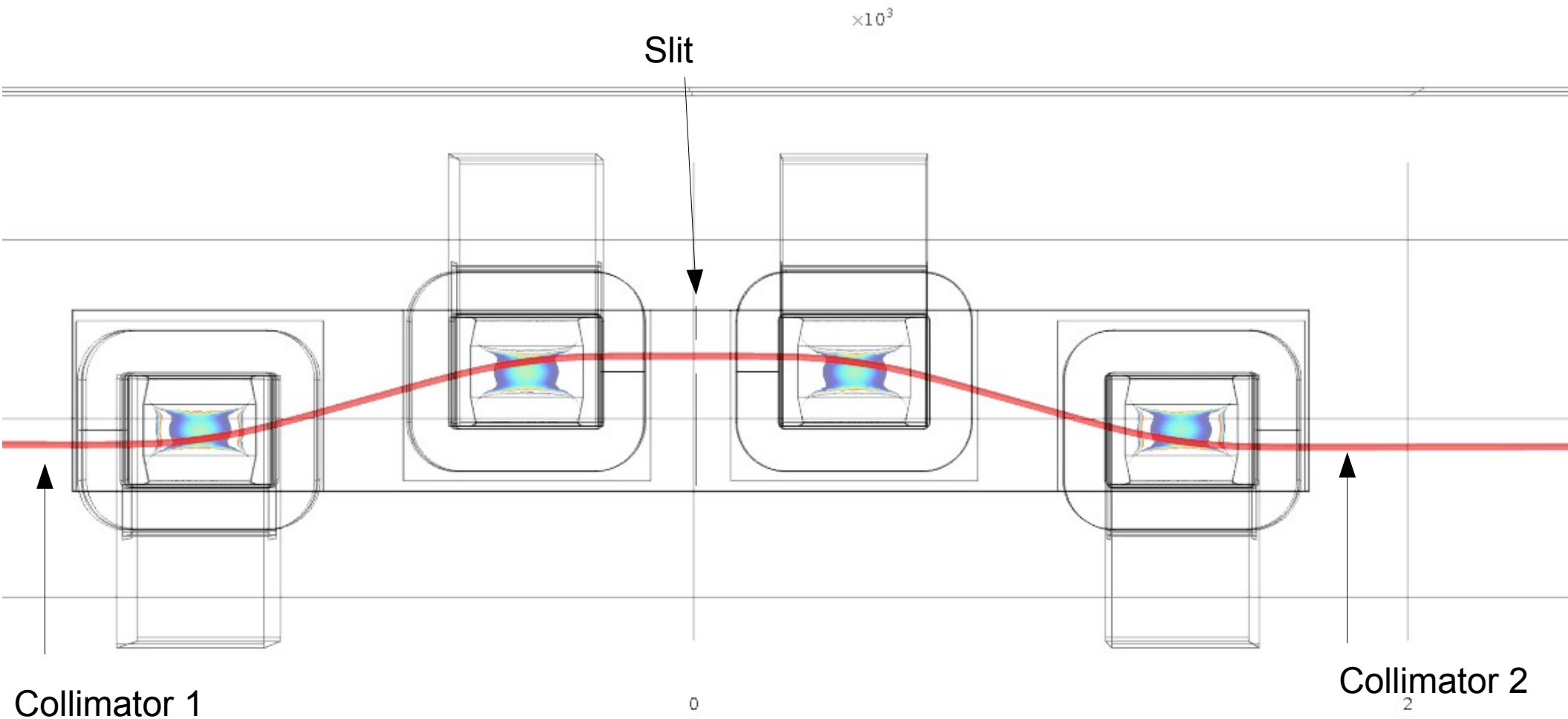
- 400 mm length
- 300 mm pole width
- 59 mm gap
- 150 mm GFR
- Max Power ~40kWatt in total
- Total weight ~3T

Pole shape



- Lateral shimming for increasing field uniformity (0.05% up to 0.24% at lower fields)
- Rogowski longitudinal shape to reduce effective length (0.450 mm – 0.443 mm)

# Beam Transport



Vacuum Chamber: 500x50 mm section  
490x40 mm inner space  
Length 3800 mm (3 or 4 sections)

# PMQ order

- Tender procedure started
- Documentation to manufactures will be sent shortly