

D

C

B

A

1

1

2

2

3

3

4

4

EDIT

TRACKER ON DETECTOR

INVERTIRE NET TDO TDI SU CONNETTORE JTAG

PROBLEMA RESISTENZE SU ADDER

METTERE CONDENSATORE 2.2U SU OUT REFERENCE

INVERTIRE DIN-DOUT SULLA MEMORIA SPI

MONTARE UNA R DA 1.5K PER AUMENTARE DINAMICA SU AD8012 VICINO R53 E R 476

AL POSTO DI LMH7615 MONTARE AD8012

METTERE RESISTENZA 220 OHM SU REF2V5 E 3V3

NON MONTARE LP2985 FARE CORTO IN E OUT



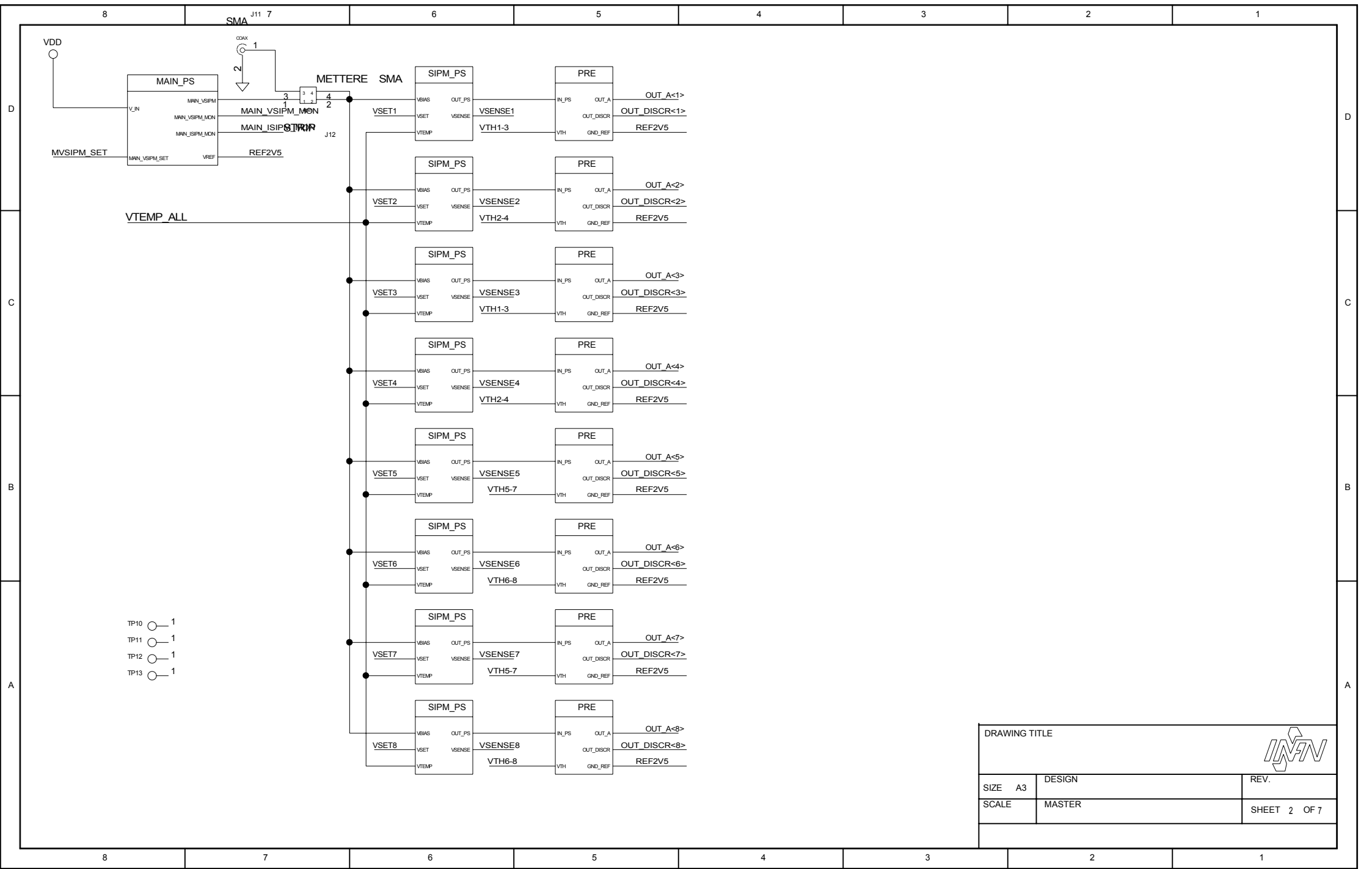
TITLE:	DATE:
ENGINEER:	PAGE:


D

C

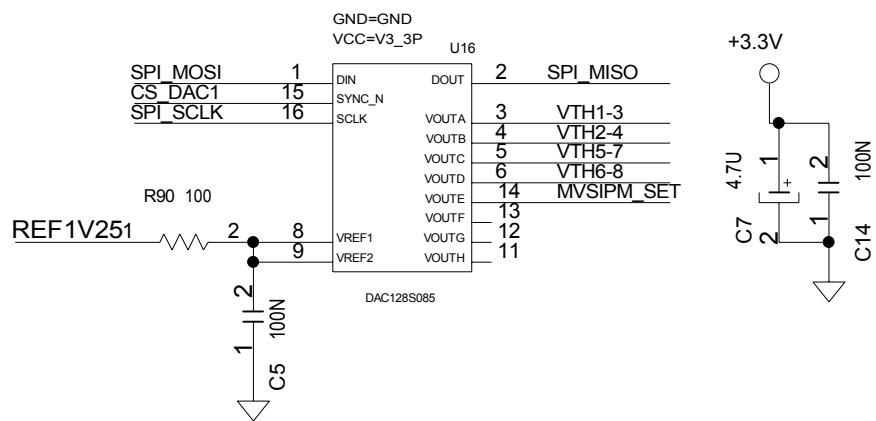
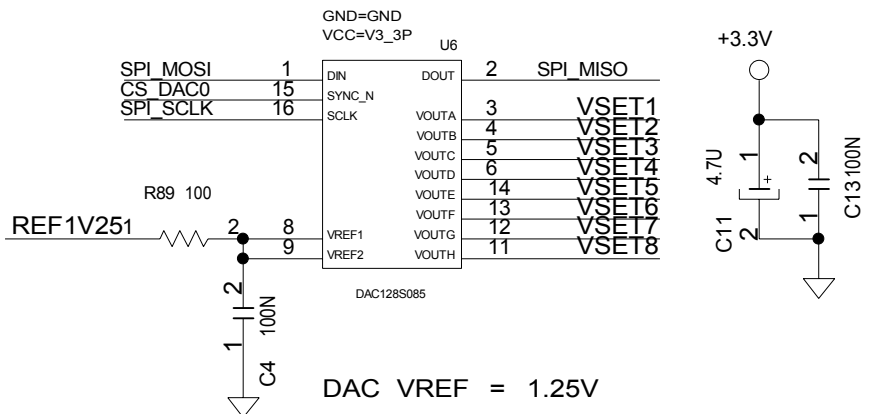
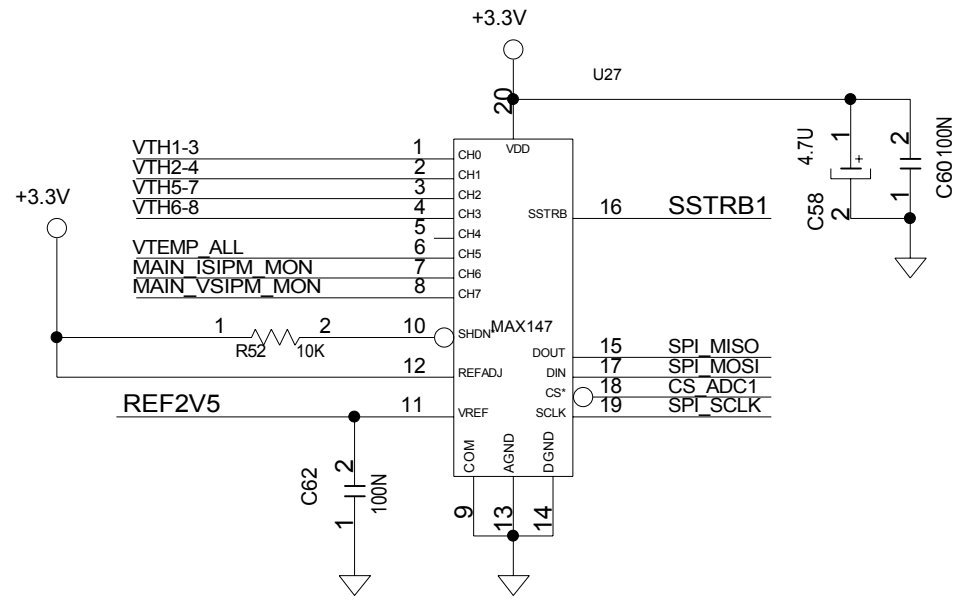
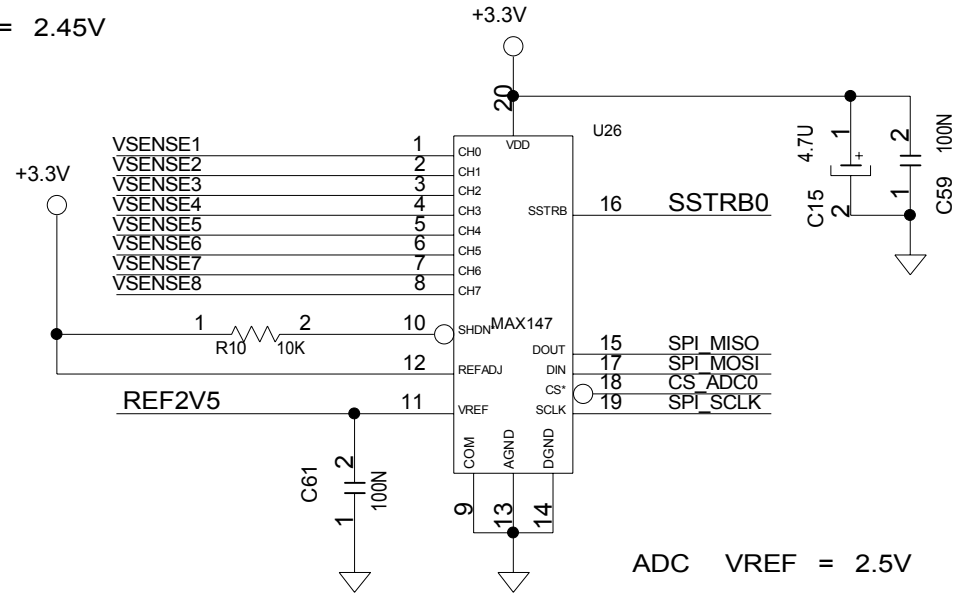
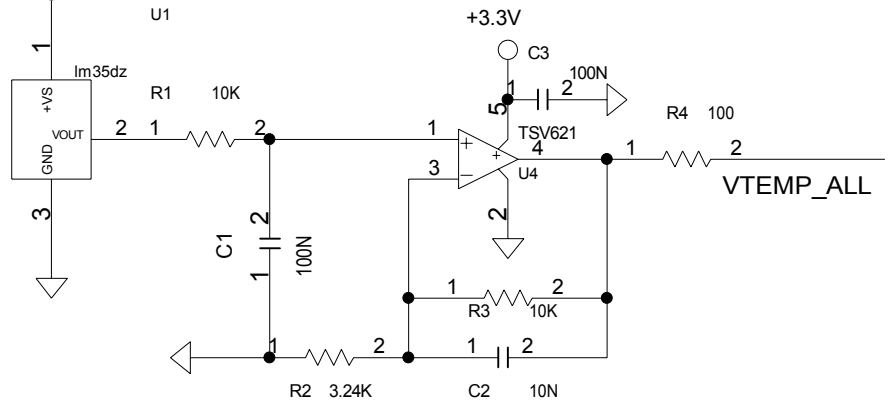
B

A

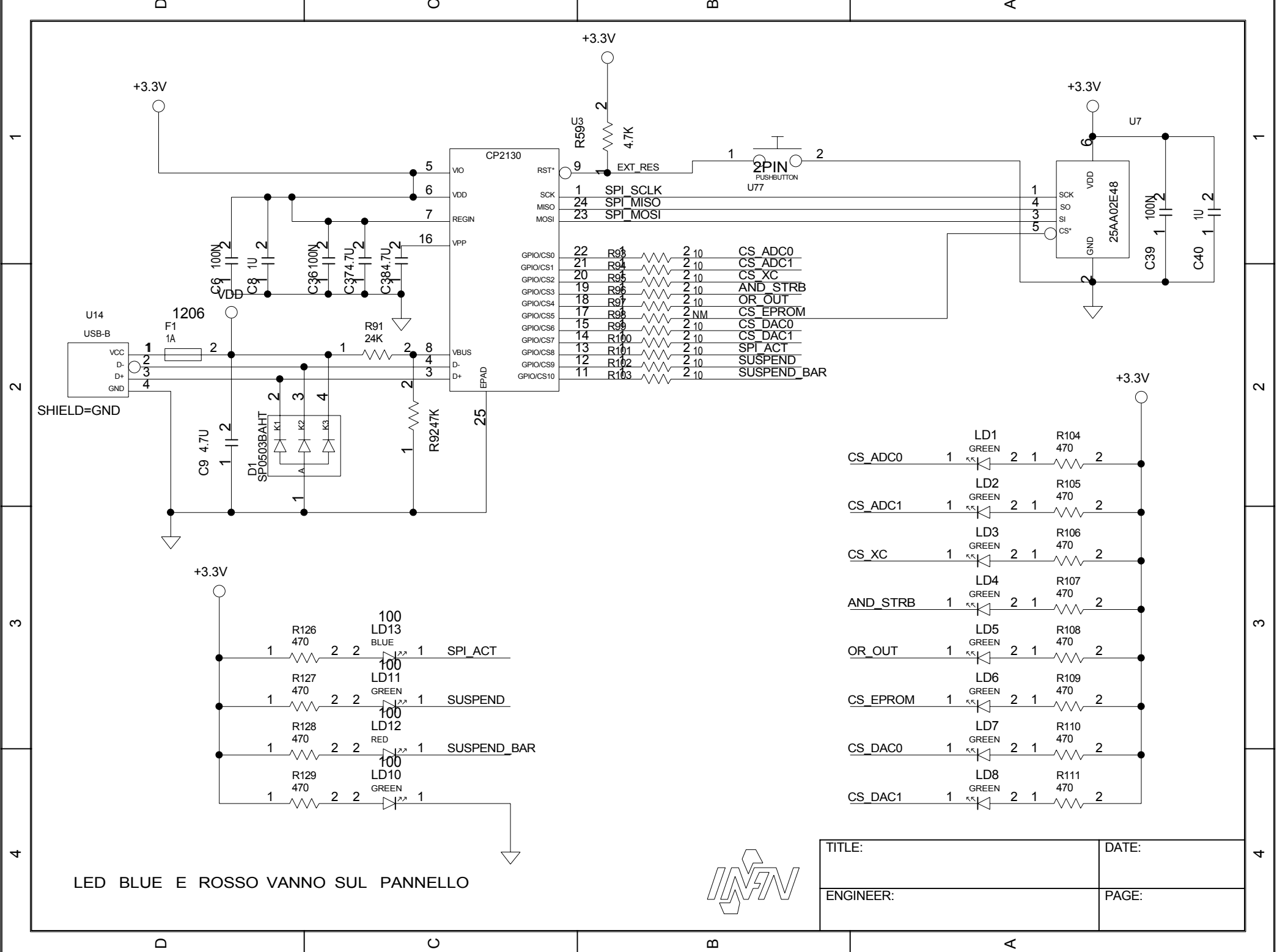


DRAWING TITLE			
SIZE	A3	DESIGN	
SCALE		MASTER	SHEET 2 OF 7

VDD SENSOR= 10MV/C GAIN = 4.1 T_MAX = 60 V_OUT_MAX = 2.45V



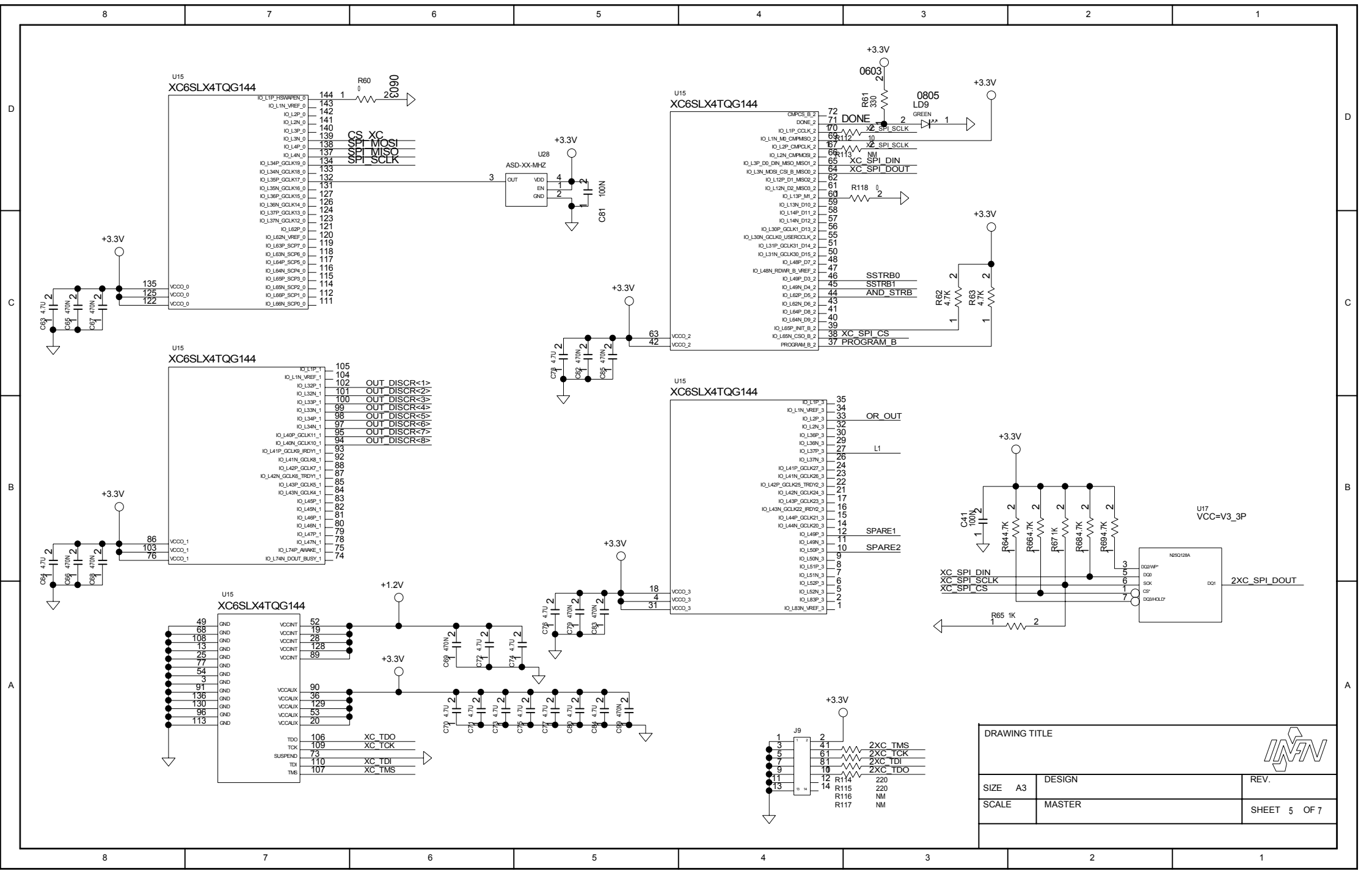
TITLE:	DATE:
ENGINEER:	PAGE:




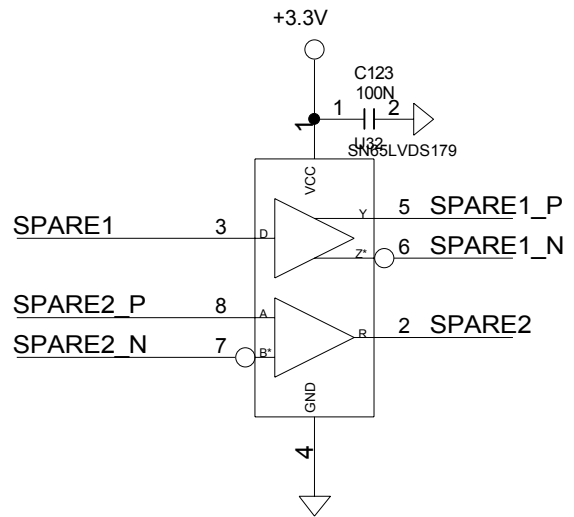
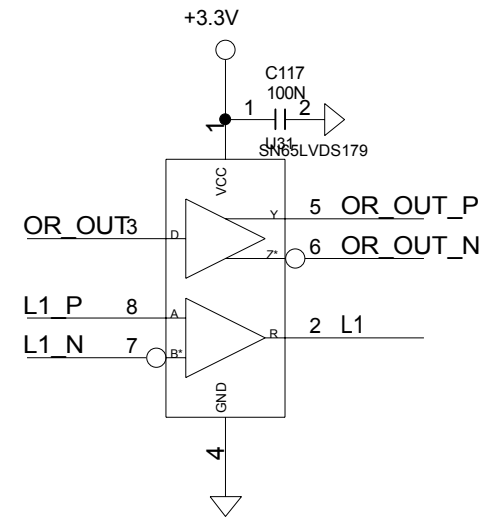
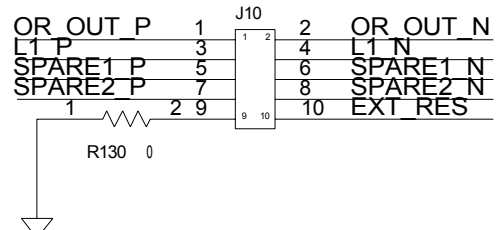
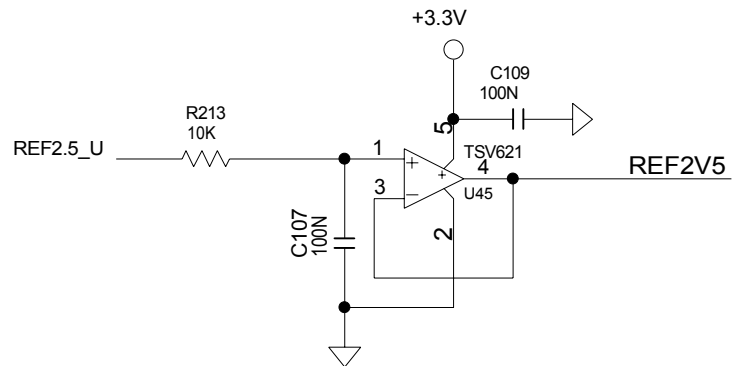
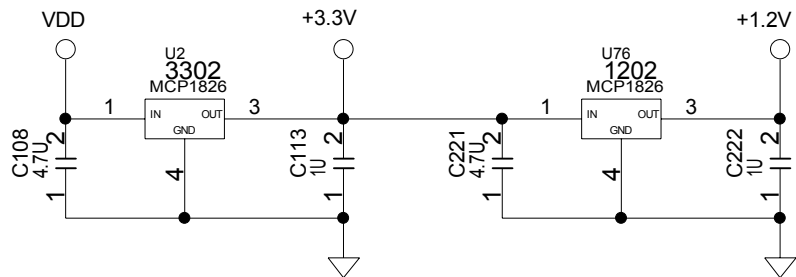
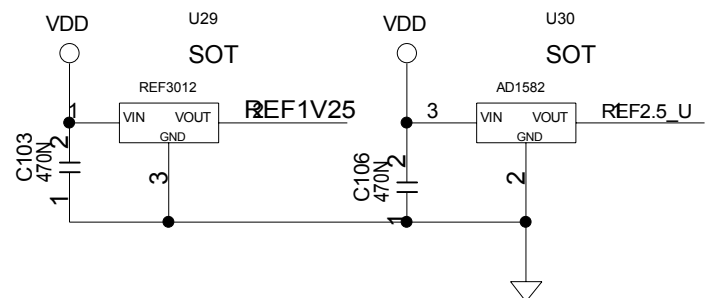
LED BLUE E ROSSO VANNO SUL PANNELLO



TITLE:	DATE:
ENGINEER:	PAGE:



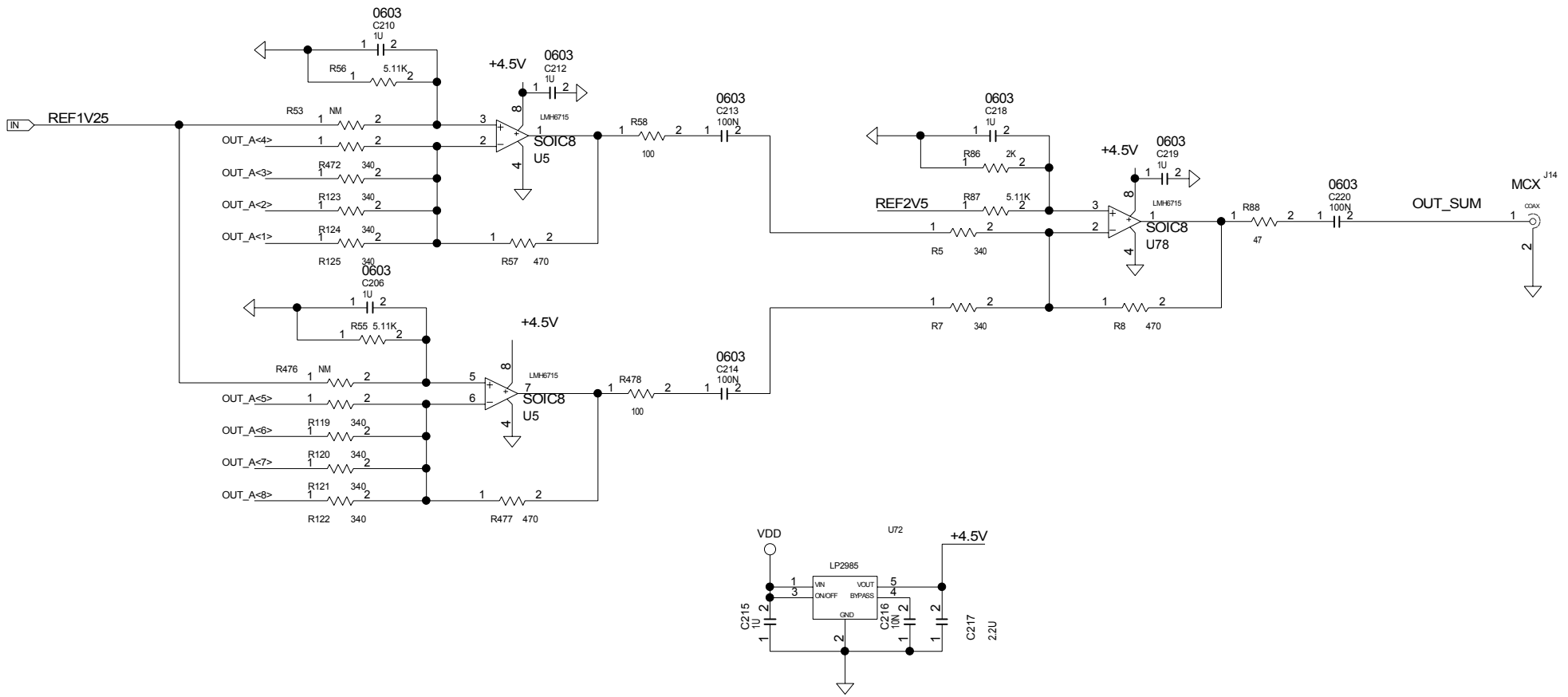
DRAWING TITLE			
SIZE	A3	DESIGN	
SCALE		MASTER	SHEET 5 OF 7




AGGIUNGERE REGOLATORE 1.2V MCP1826

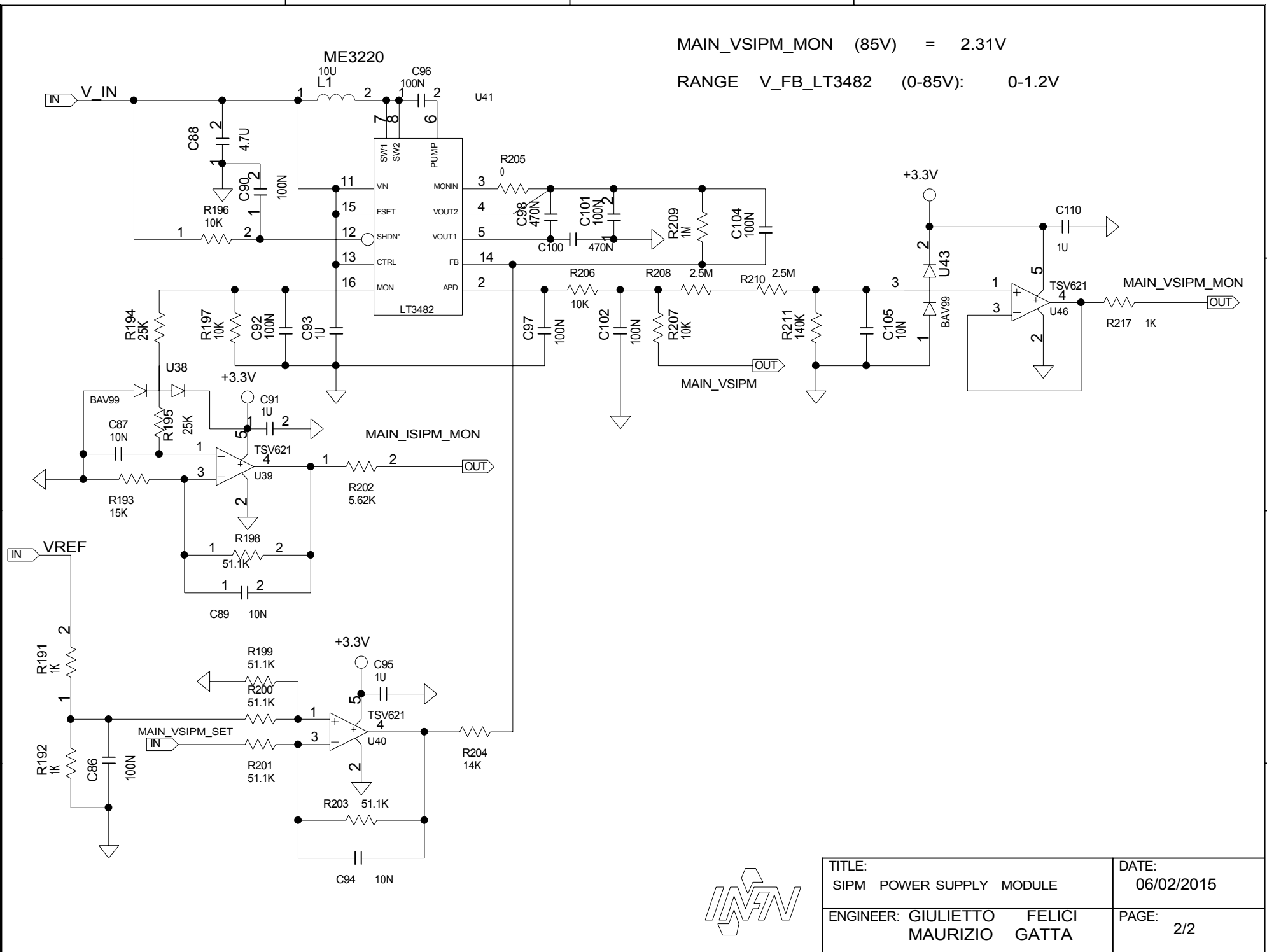


TITLE:	DATE:
ENGINEER:	PAGE:



GAIN= 0.52 VPRE

DRAWING TITLE			
SIZE	A3	DESIGN	
SCALE		MASTER	SHEET 7 OF 7



TITLE: SIPM POWER SUPPLY MODULE	DATE: 06/02/2015
ENGINEER: GIULIETTO FELICI MAURIZIO GATTA	PAGE: 2/2

1
2
3
4

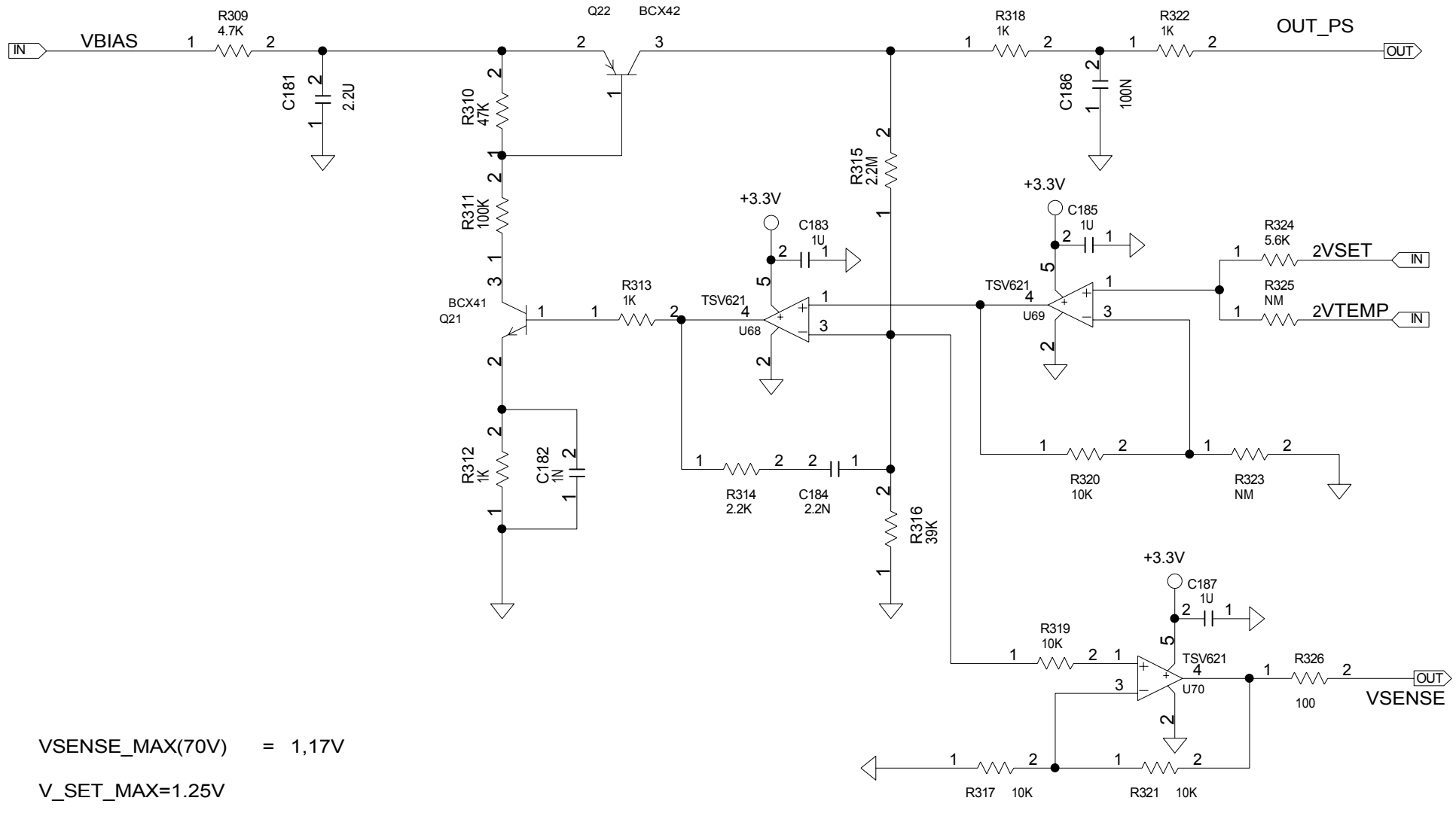
D

C

B

A

1
2
3
4



VSENSE_MAX(70V) = 1,17V
 V_SET_MAX=1.25V



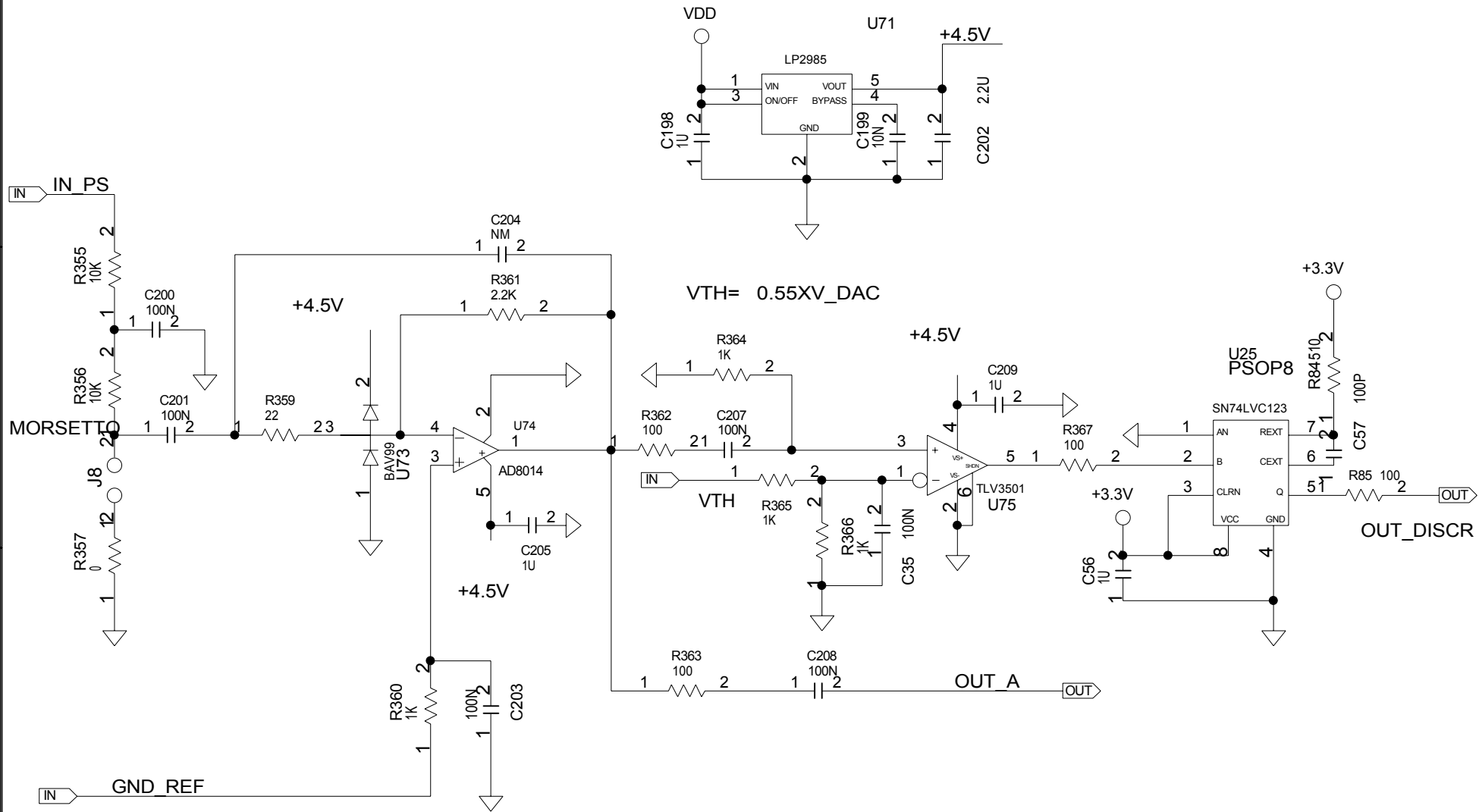
TITLE:	DATE:
ENGINEER:	PAGE:

D

C

B

A



$$VTH = 0.55XV_DAC$$

LA R DA 1K OHM IN PARALLELO A C114 LA ELIMINO PERCHE NON ENTRA NEL BLOCCHETTO SE SERVE LA MONTIAMO IN PARALLELO AL CONDENSATORE



TITLE:	DATE:
ENGINEER:	PAGE:

1
2
3
4

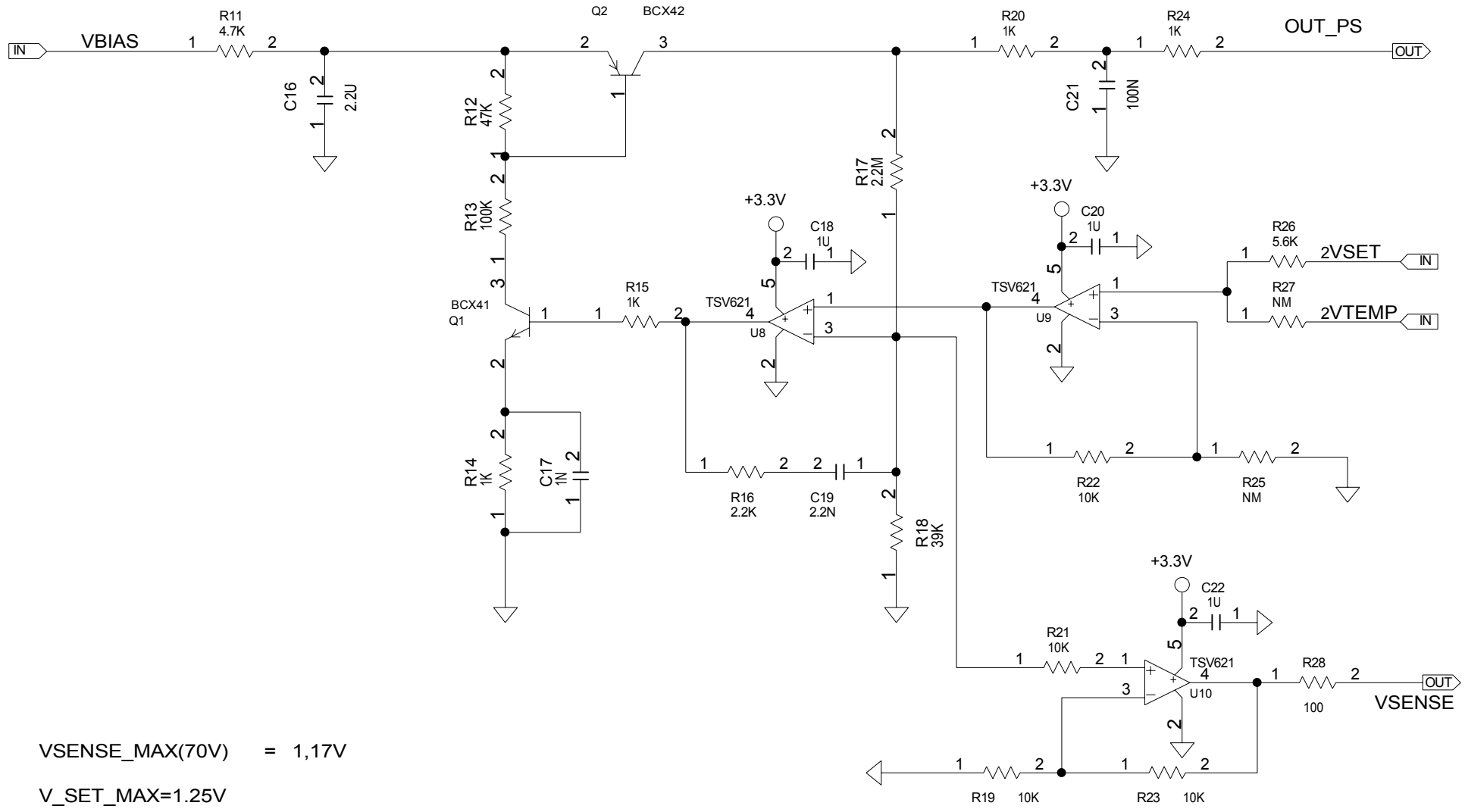
D

C

B

A

1
2
3
4



VSENSE_MAX(70V) = 1,17V
 V_SET_MAX=1.25V



TITLE:	DATE:
ENGINEER:	PAGE:

D

C

B

A

1
2
3
4

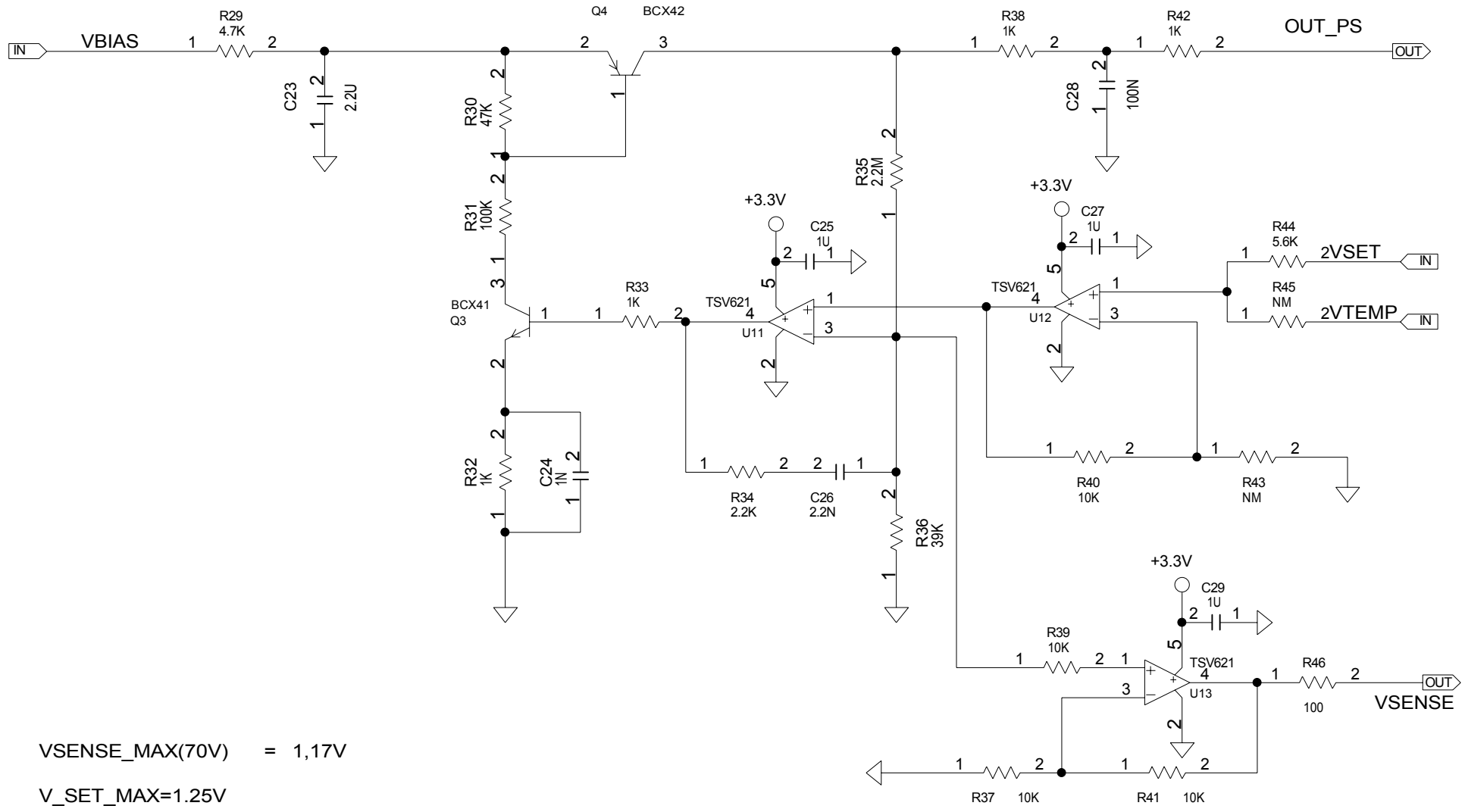
D

C

B

A

1
2
3
4



VSENSE_MAX(70V) = 1,17V
 V_SET_MAX=1.25V



TITLE:	DATE:
ENGINEER:	PAGE:

D

C

B

A

1
2
3
4

1
2
3
4

D

C

B

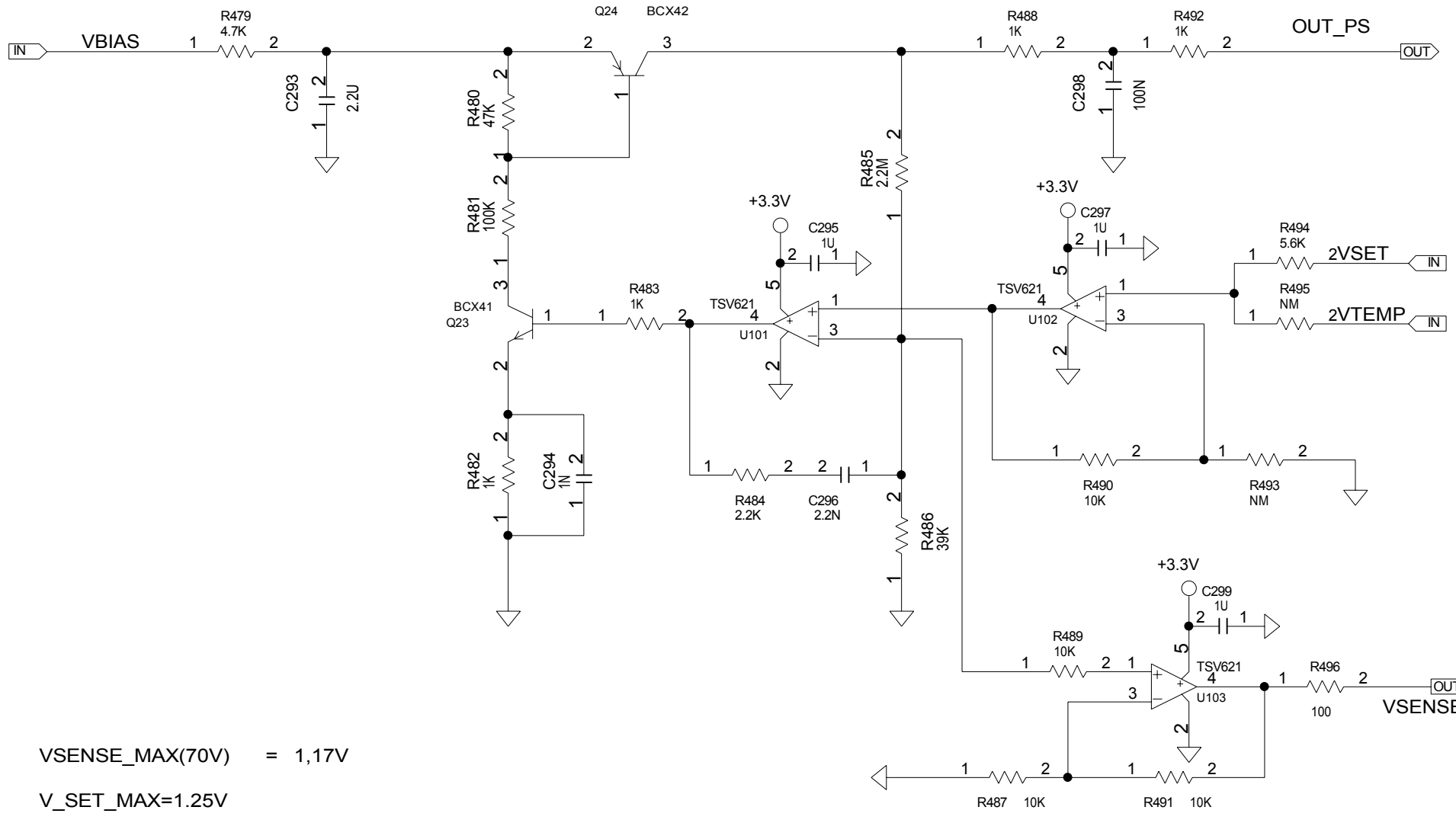
A

D

C

B

A



VSENSE_MAX(70V) = 1,17V
 V_SET_MAX=1.25V



TITLE:	DATE:
ENGINEER:	PAGE:

1
2
3
4

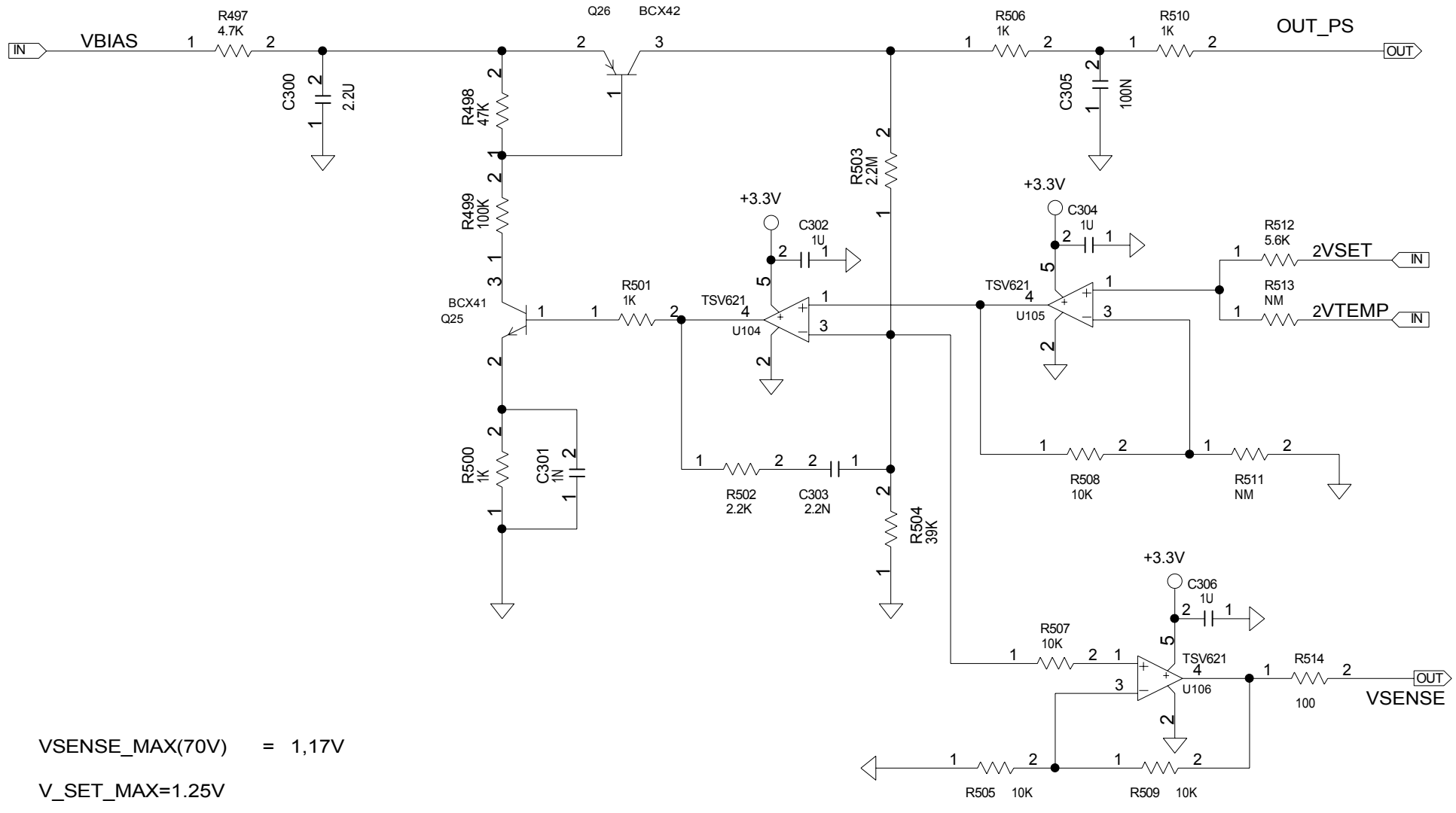
D

C

B

A

1
2
3
4



VSENSE_MAX(70V) = 1,17V
 V_SET_MAX=1.25V



TITLE:	DATE:
ENGINEER:	PAGE:

D

C

B

A

1
2
3
4

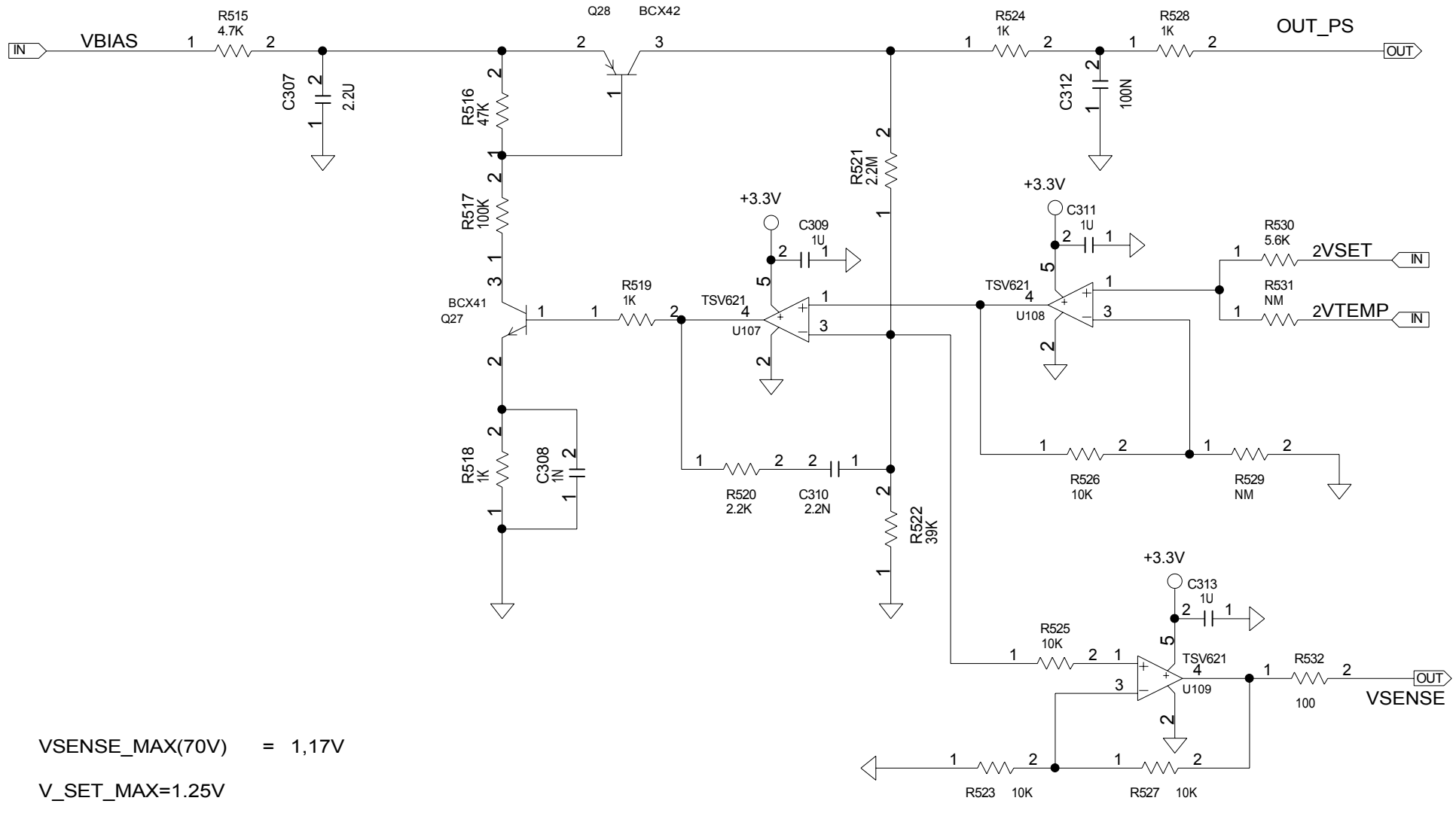
D

C

B

A

1
2
3
4



VSENSE_MAX(70V) = 1,17V
 V_SET_MAX=1.25V



TITLE:	DATE:
ENGINEER:	PAGE:

D

C

B

A

1
2
3
4

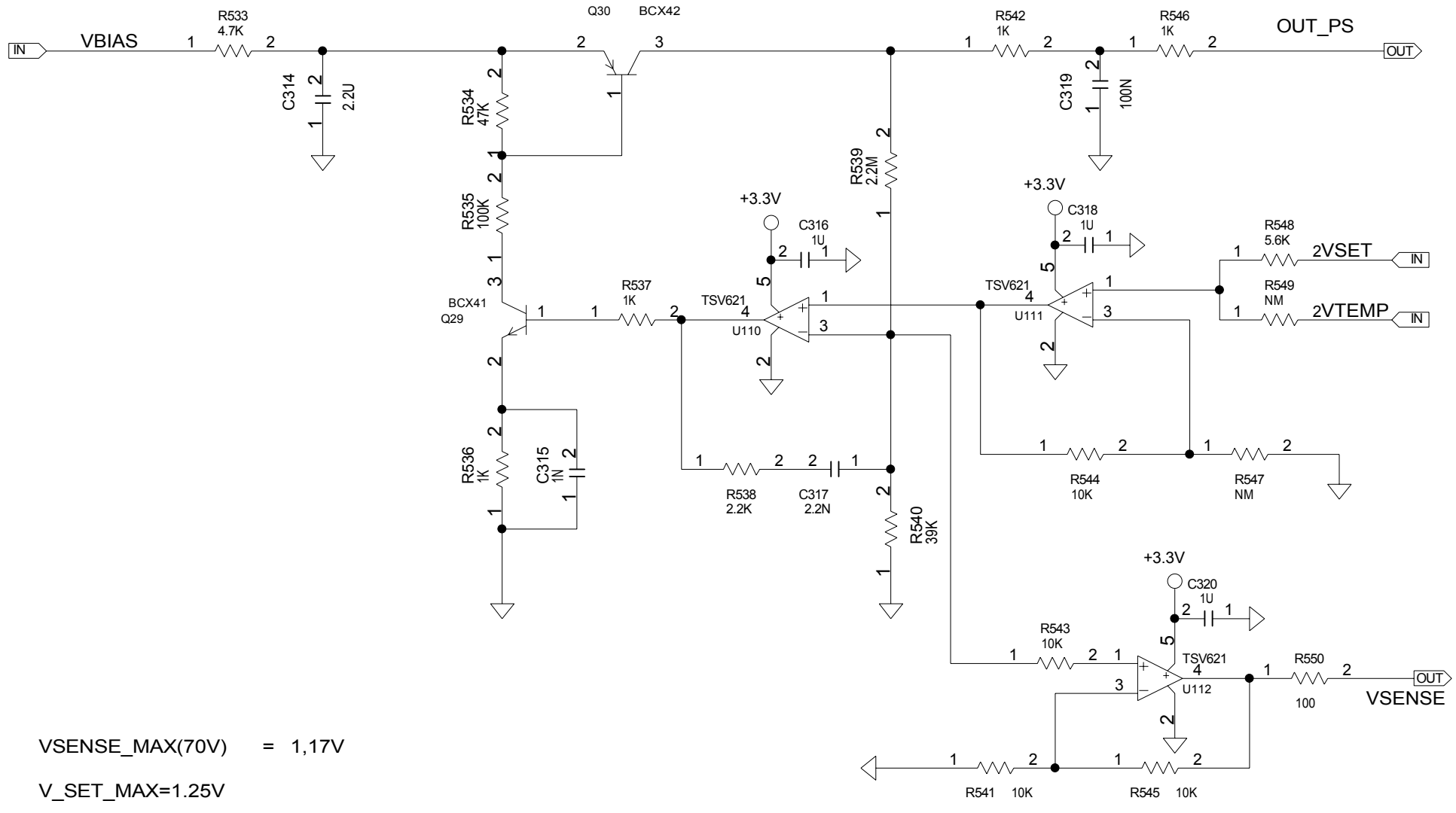
D

C

B

A

1
2
3
4



VSENSE_MAX(70V) = 1,17V
 V_SET_MAX=1.25V



TITLE:	DATE:
ENGINEER:	PAGE:

D

C

B

A

1
2
3
4

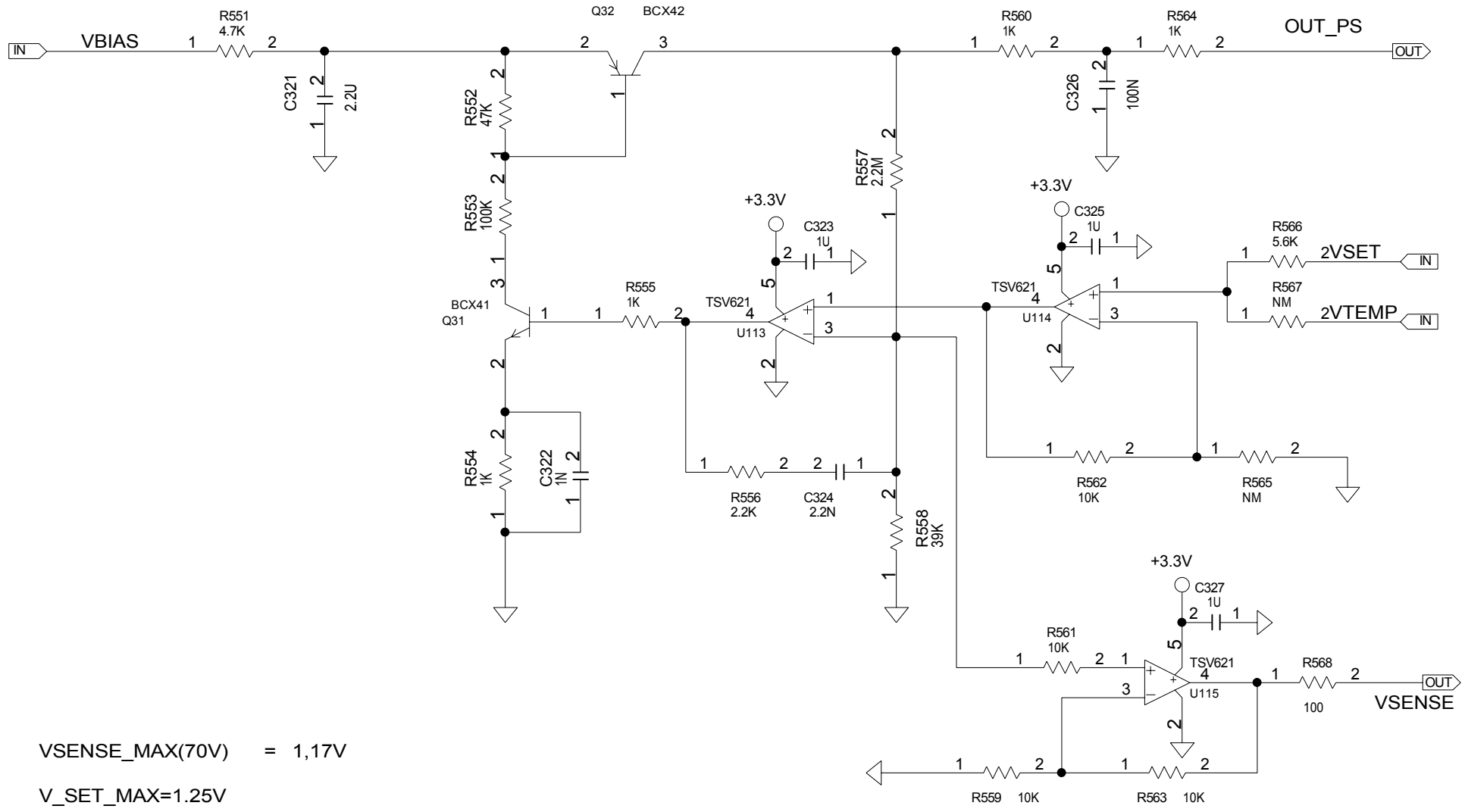
D

C

B

A

1
2
3
4



VSENSE_MAX(70V) = 1,17V
 V_SET_MAX=1.25V



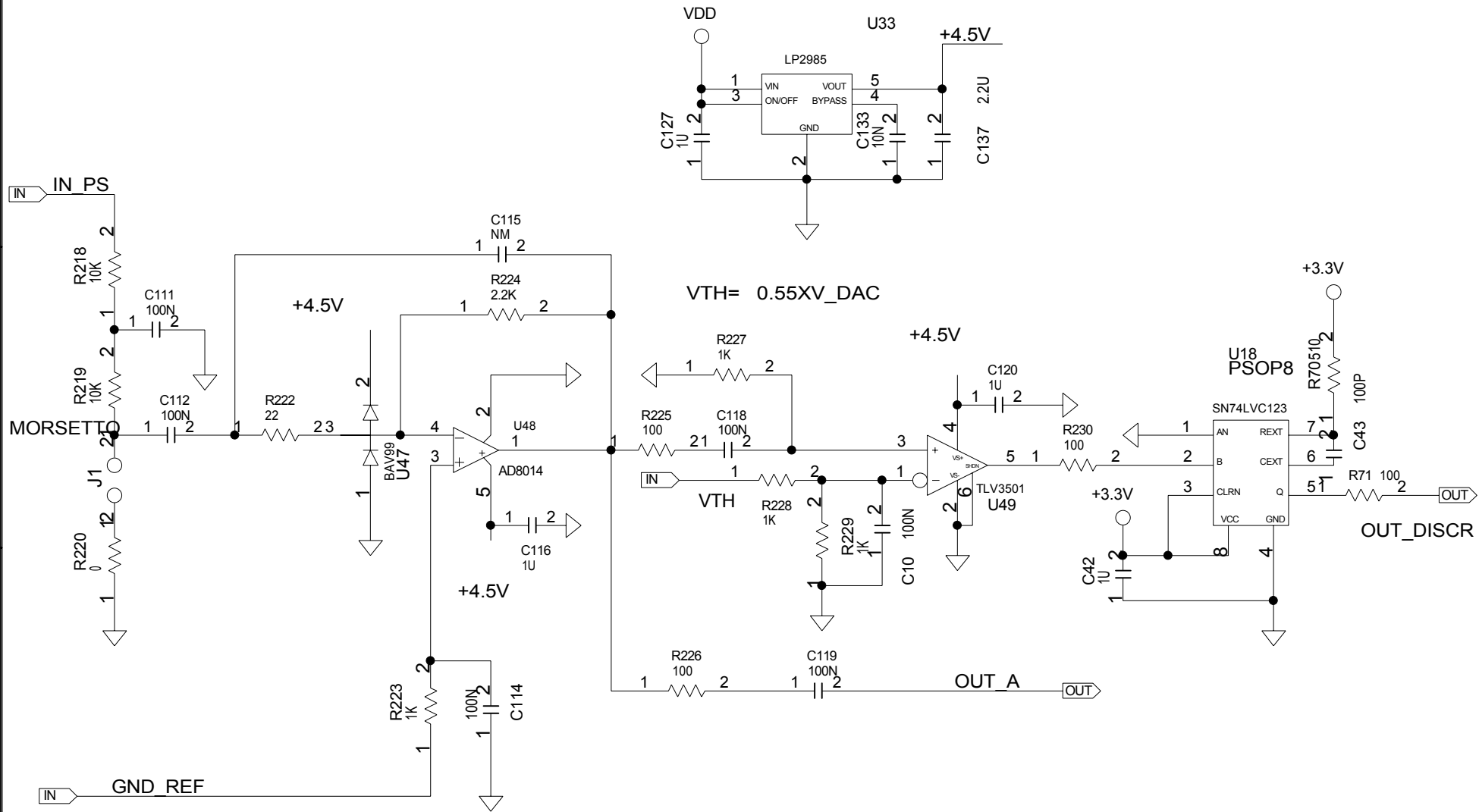
TITLE:	DATE:
ENGINEER:	PAGE:

D

C

B

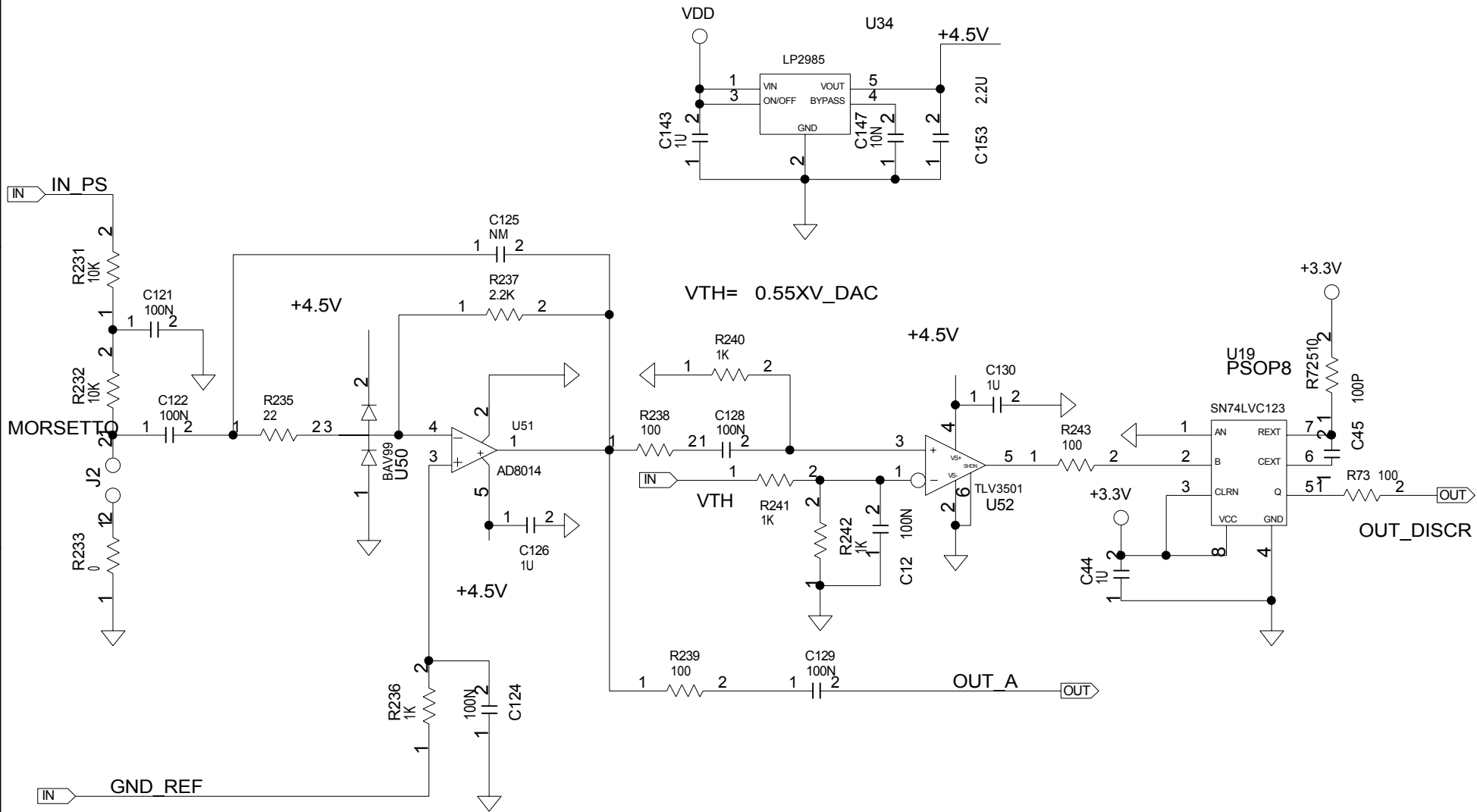
A



LA R DA 1K OHM IN PARALLELO A C114 LA ELIMINO PERCHE NON ENTRA NEL BLOCCHETTO SE SERVE LA MONTIAMO IN PARALLELO AL CONDENSATORE



TITLE:	DATE:
ENGINEER:	PAGE:

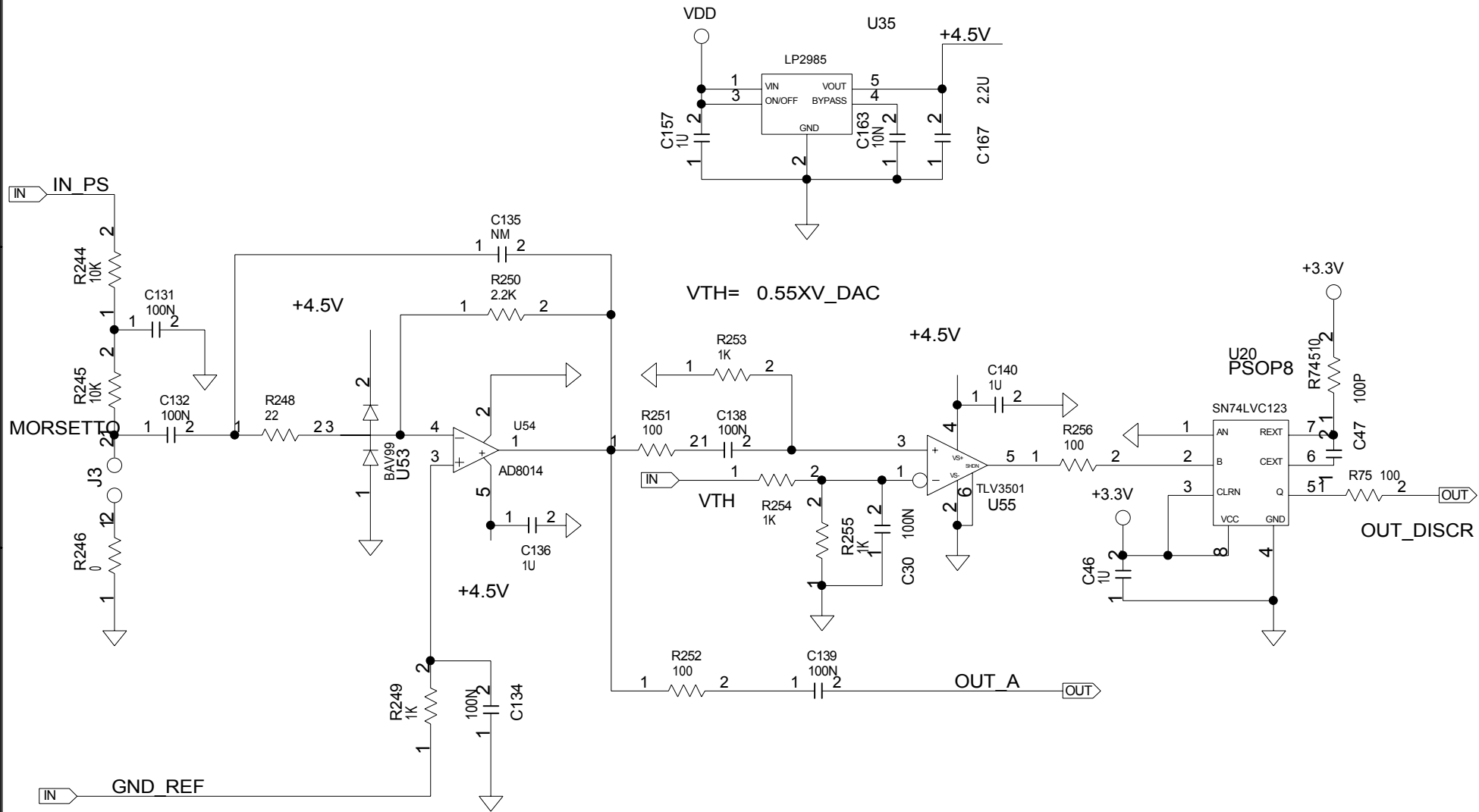


$$V_{TH} = 0.55XV_DAC$$

LA R DA 1K OHM IN PARALLELO A C114 LA ELIMINO PERCHE NON ENTRA NEL BLOCCHETTO SE SERVE LA MONTIAMO IN PARALLELO AL CONDENSATORE



TITLE:	DATE:
ENGINEER:	PAGE:

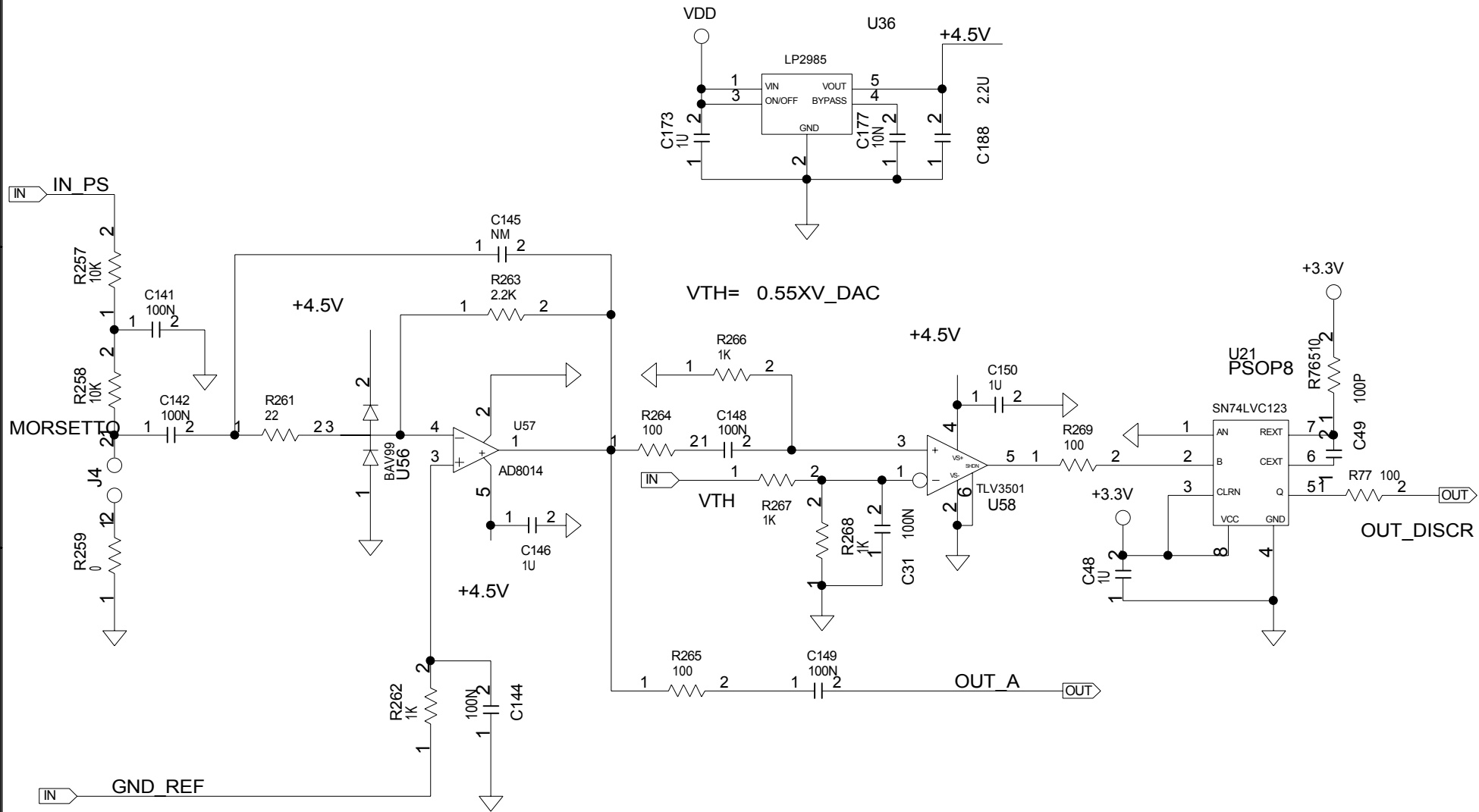


$$V_{TH} = 0.55XV_DAC$$

LA R DA 1K OHM IN PARALLELO A C114 LA ELIMINO PERCHE NON ENTRA NEL BLOCCHETTO SE SERVE LA MONTIAMO IN PARALLELO AL CONDENSATORE



TITLE:	DATE:
ENGINEER:	PAGE:

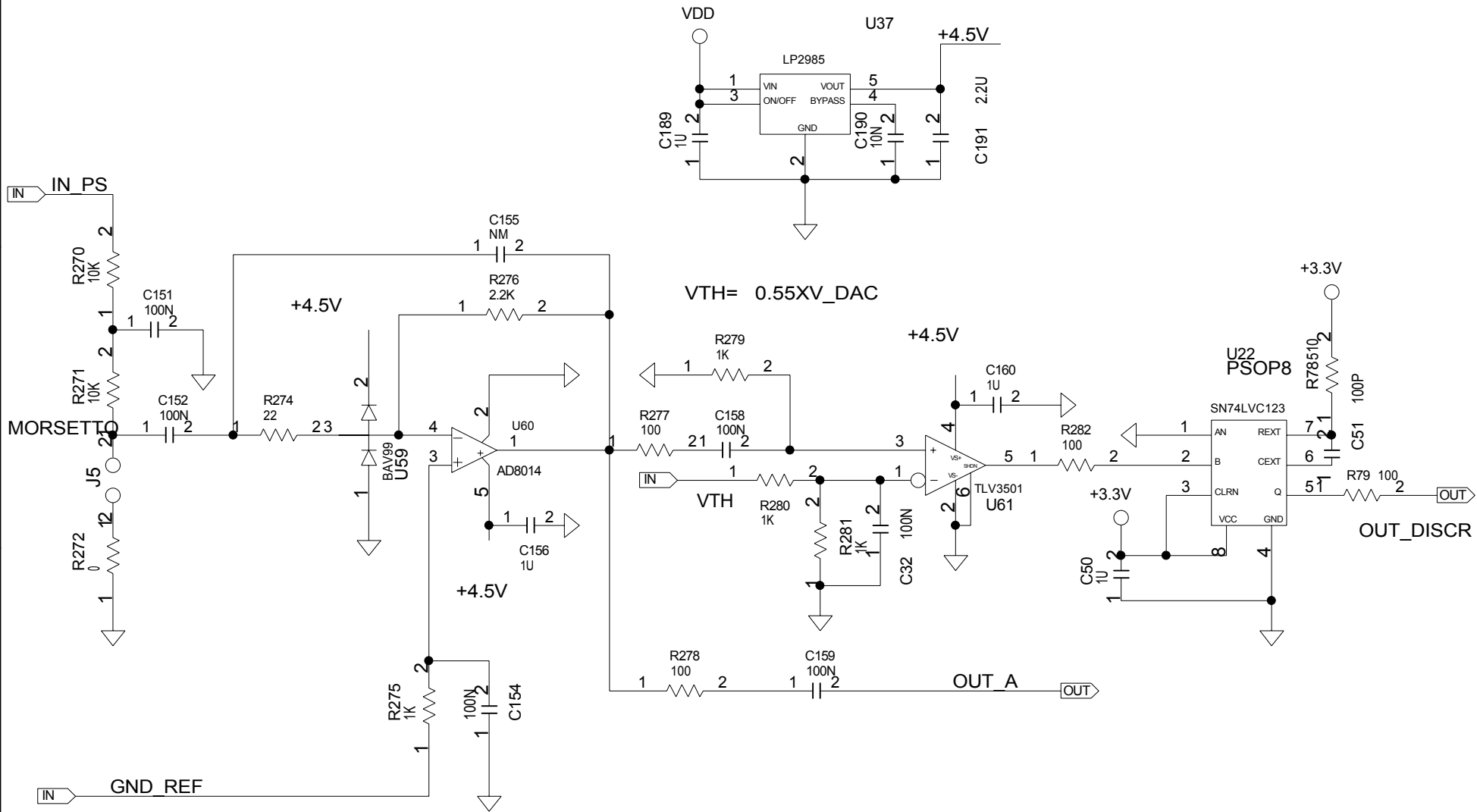


$$V_{TH} = 0.55XV_DAC$$

LA R DA 1K OHM IN PARALLELO A C114 LA ELIMINO PERCHE NON ENTRA NEL BLOCCHETTO SE SERVE LA MONTIAMO IN PARALLELO AL CONDENSATORE



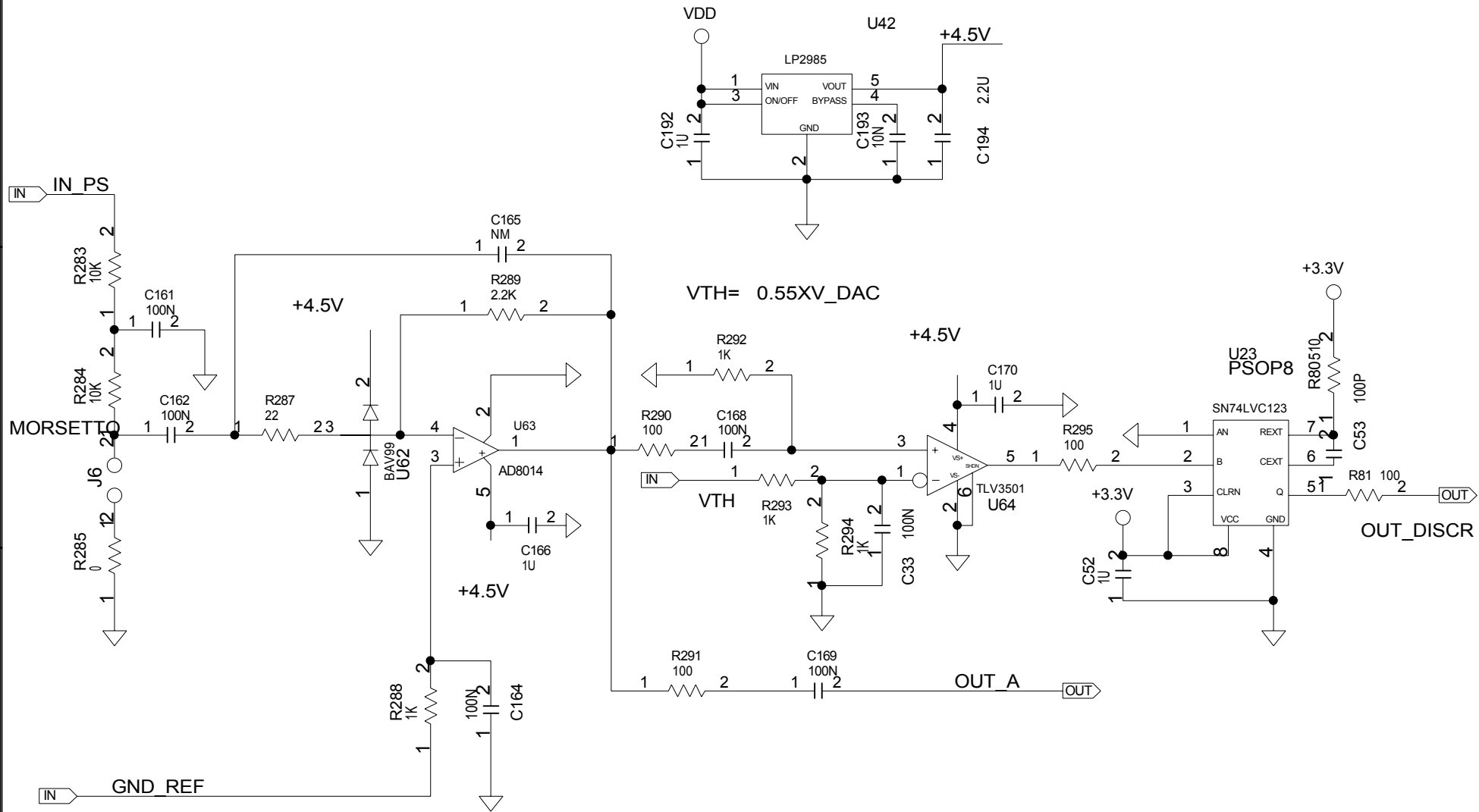
TITLE:	DATE:
ENGINEER:	PAGE:



LA R DA 1K OHM IN PARALLELO A C114 LA ELIMINO PERCHE NON ENTRA NEL BLOCCHETTO
 SE SERVE LA MONTIAMO IN PARALLELO AL CONDENSATORE



TITLE:	DATE:
ENGINEER:	PAGE:

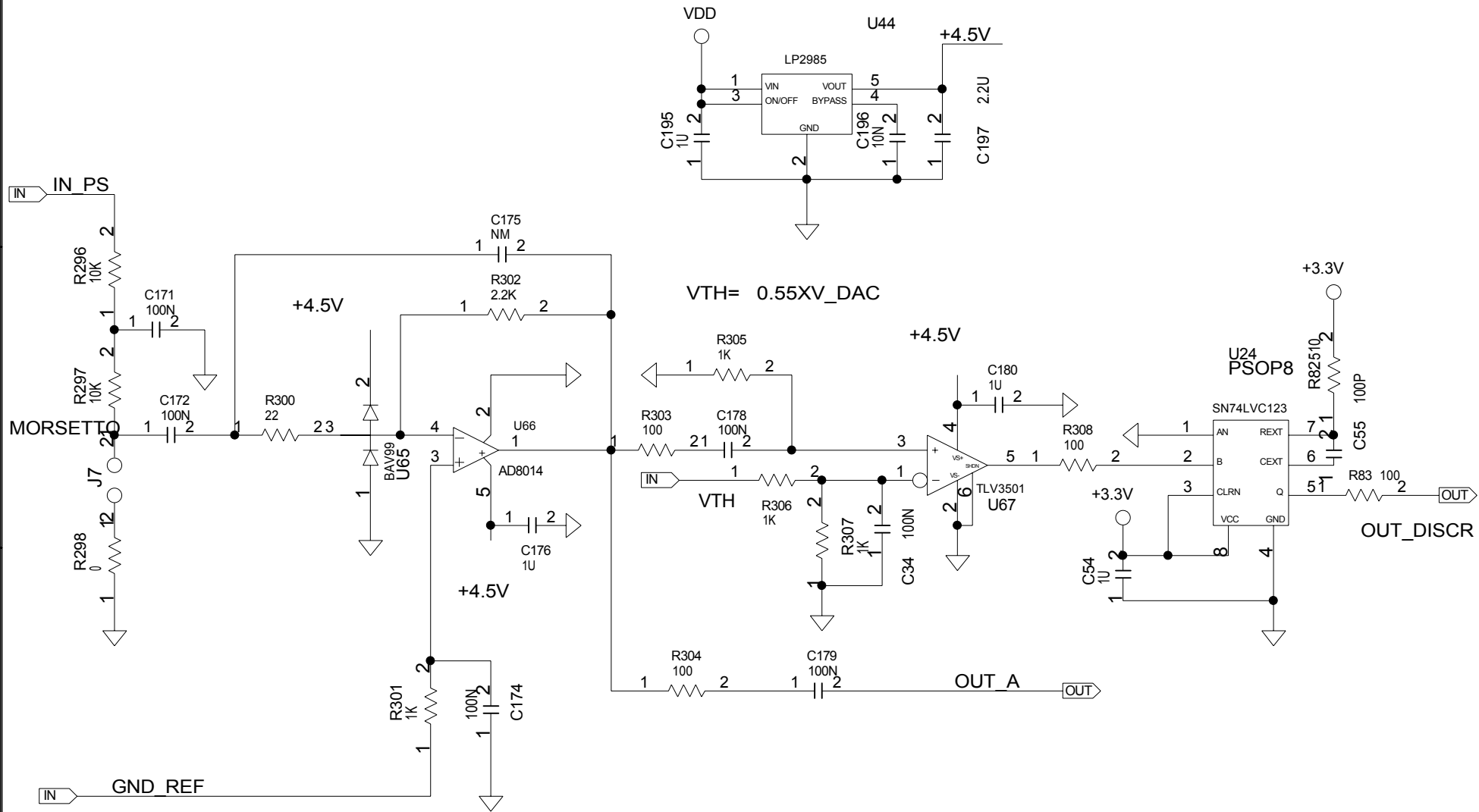


$$V_{TH} = 0.55XV_DAC$$

LA R DA 1K OHM IN PARALLELO A C114 LA ELIMINO PERCHE NON ENTRA NEL BLOCCHETTO SE SERVE LA MONTIAMO IN PARALLELO AL CONDENSATORE



TITLE:	DATE:
ENGINEER:	PAGE:



VTH= 0.55XV_DAC

LA R DA 1K OHM IN PARALLELO A C114 LA ELIMINO PERCHE NON ENTRA NEL BLOCCHETTO SE SERVE LA MONTIAMO IN PARALLELO AL CONDENSATORE



TITLE:	DATE:
ENGINEER:	PAGE: